

Positioner

Contents

A series
Part List

A series
Selection guide
Dimension

A series
Torque table

R series
Part list

R series
Selection guide
Dimension

R series
Torque table

Various option

Limit switch
box

Positioner

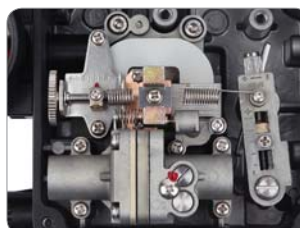
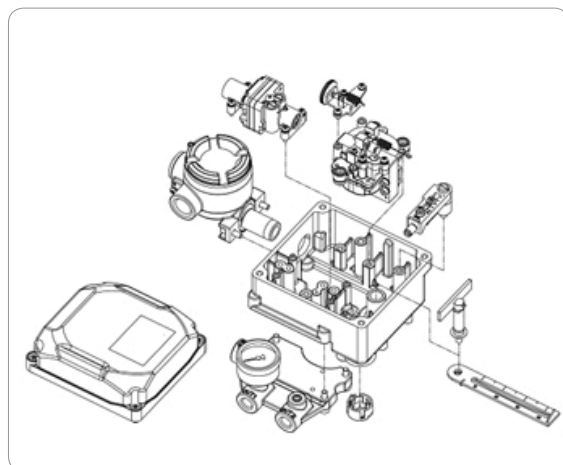


- Simple zero and span adjustment.
- Easy maintenance due to built-in module type.
- Strong to vibrations and No resonance between 5-200Hz.
- By-pass valve (A/M switch) installed.
- Air connection part is designed for detachability and it can be changed PF/NPT tapping threads in the field easily.

Type	KEP10L (Linear)		KEP10R (Rotary)	
	Single	Double	Single	Double
Input Signal	4~20mA DC			
Impedance	250±15Ω			
Supply Pressure	0.14~0.7MPa			
Stroke	10~150mm		0~90°	
Air Connection	PT 1/4 (NPT 1/4)			
Gauge Connection	PT 1/8 (NPT 1/8)			
Conduit	PF 1/2 (NPT 1/2)			
Explosion Proof	IP66			
Destruction	Operating Temp. -30°C~70°C (#L:-40°C~70°C/#H:-30°C~120°C)			
	Explosion Temp. -40°C~60°C(T5)/-40°C~40°C(T6)			
Linearity	±1.0% F.S	±2.0% F.S	±1.0% F.S	±2.0% F.S
Sensitivity	±0.2% F.S	±0.5% F.S	±0.2% F.S	±0.5% F.S
Hysteresis	±1.0% F.S			
Repeatability	±0.5% F.S			
Air Consumption	Blow 2.5LPM (Sup=0.14MPa)			
Flow Capacity	Over 80LPM (Sup=0.14MPa)			
Material	Aluminum Diecasting			
Weight	2.8Kg			

-Tested under ambient temperature of 20°C, absolute pressure of 760mmHg, and humidity of 65%.

Model code : KEP @B©C③-①		
③ Motion	L : Linear	
	R : Rotary	
© Explosion	N : Non	
	B : Ex dmb IIB	
	C : Ex dmb IIC	
	A : Ex ia IIC	
© Connection		Conduit Air
	1 :	PF1/2 PT1/4
	2 :	PF1/2 NPT1/4
③ Lever	Linear	1 : 10~40mm
		4 : 40~70mm
		7 : 70~100mm
		0 : 100~150mm
	Rotary	6 : M6*34L
	N : Namur	
© Ambient Temp.	S : -30°C~70°C	
	L : -40°C~70°C	
	H : -30°C~120°C	
① Option	F : 4~20mA Feedback signal	
	L : Limit switch included (2xSPDT)	
	2 : Feedback+Limit switch	



Contents

A series
Part List

A series
Selection guide
Dimension

A series
Torque table

R series
Part list

R series
Selection guide
Dimension

R series
Torque table

Various option

Limit switch
box

Positioner

► A series (scotch yoke) ISO5211 / Stem / Weight

MODEL	ISO5211	STEM	AD(Kg)	AS(Kg)
A50	F03/F05/F07	11*11	1.4	1.6
		#14*14		
		#9.7*15		
A65	F05/F07	14*14	2.3	3.0
		#11*11		
		#11.7*Ø17		
A80	F07	17*17	3.9	5.3
		#14.7*Ø19		
A100	F07/F10	22*22	6.7	9.5
		#17.7*Ø22		
A125	F07/F10	22*22	11.3	17.6
A140	F10/F12	27*27	16.4	23.9
		#22*22		
A160	F14	36*36	23.7	36.6
	#F10/F12	#27*27		
A185	F14	36*36	34.8	56.9
A210	F16	46*46	45.5	77.2
	#F14	#36*36		
A250	F16	46*46	65.8	119.6
A300	F16/F25	55*55	165	275.5

#Option

► R series (rack pinion) ISO5211 / Stem / Weight

MODEL	ISO5211	STEM	RD(Kg)	RS(Kg)
RD32	F03	9*9	0.3	-
R40	F03/F05	9*9	0.5	0.6
	#F04			
R50	F03/F05/F07	11*11	1.0	1.1
	#F04			
R65	F05/F07	14*14	1.4	1.5
	#F04/F07			
R80	F05/F07	17*17	2.9	3.3
R90	F07	17*17	3.4	3.8
R100	F07/F10	22*22	4.7	5.4
		#17*17		
R115	F07/F10	22*22	6.7	7.5
R125	F07/F10	22*22	8.6	9.9
R140	F10/F12	27*27	12.4	14.5
		#22*22		
R160	F10/F12	27*27	16.9	19.5
R185	F10/F12	36*36	24.2	29.0
R210	F14	36*36	32.3	37.9

#Option