

100 Series Directional Air Pilot Valve

Single Air Pilot Valve



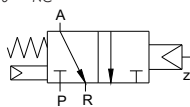
Double Air Pilot Valve



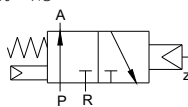
Ordering Code

- 3A1** - **10** - **M5** - **NO**
- 3A1** - 100 series, Directional Air Pilot Valve
- 10** - 3/2 way Single Air Pilot
20 - 3/2 way Double Air Pilot
- M5** - M5 X 0.8
06 - G 1/8"
- Blank** - Normally Closed
NO - Normally Open

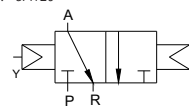
P.N.: 3A110- -NC



P.N.: 3A110- -NO



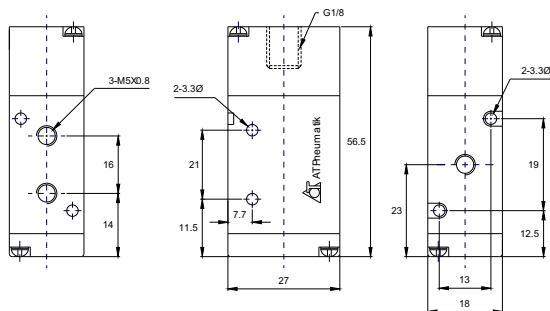
P.N.: 3A120-



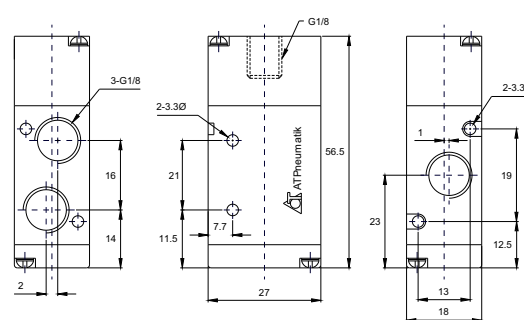
Air Pilot Valve Specification

Part Number	3A110-M5	3A120-M5	3A110-06	3A120-06
Orifice Size	10mm ² (CV=0.56)		12mm ² (CV=0.67)	
Port Connection	Supply, Outlet, Exhaust M5 X 0.8		Supply, Outlet, Exhaust G 1/8"	
Working Medium	40 Micron Filtered Air			
Working Pressure	0.15 ~ 0.8 MPa, 1.5 ~ 8 Kg/cm ² , 22 ~ 117.6 PSI			
Maximum Test Pressure	1 MPa, 10 Kg/cm ² , 150 PSI			
Working Temperature	5 ~ 60°C, 41 ~ 140°F			
Switching Cycle	5 Cycle / Sec			

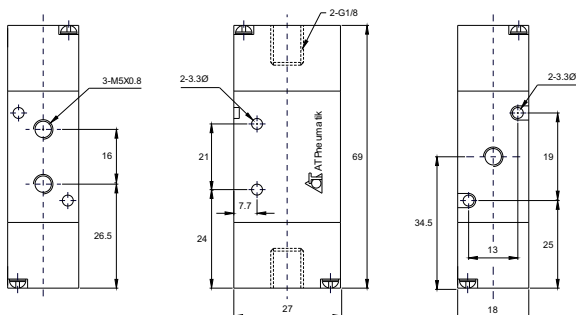
3A110-M5-NO/NC 3/2 way Single Air Pilot Valve



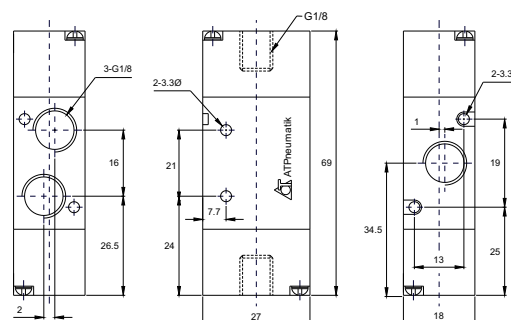
3A110-06-NO/NC 3/2 way Single Air Pilot Valve



3A120-M5 3/2 way Double Air Pilot Valve



3A120-06 3/2 way Double Air Pilot Valve



Dimensions are in mm

200 Series Directional Air Pilot Valve

Single Air Pilot Valve



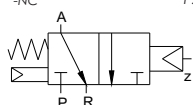
Double Air Pilot Valve



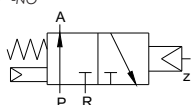
Ordering Code

- | | | | | | | |
|--------------|---|---|---|-----------|---|-----------|
| 3A2 | - | 10 | - | 06 | - | NO |
| 3A2 | - | 200 series, Directional Air Pilot valve | | | | |
| 10 | - | 3/2 way Single Air Pilot | | | | |
| 20 | - | 3/2 way Double Air Pilot | | | | |
| 06 | - | G 1/8" | | | | |
| 08 | - | G 1/4" | | | | |
| Blank | - | Normally Closed | | | | |
| NO | - | Normally Open | | | | |

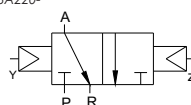
P.N.: 3A210- -NC



P.N.: 3A210- -NO



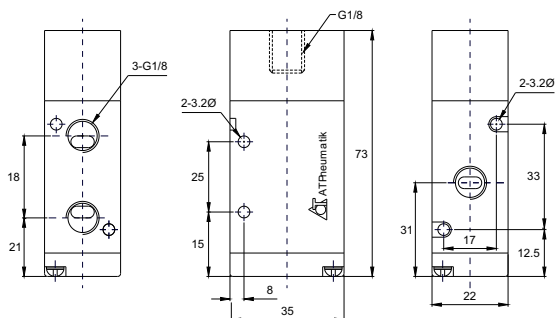
P.N.: 3A220-



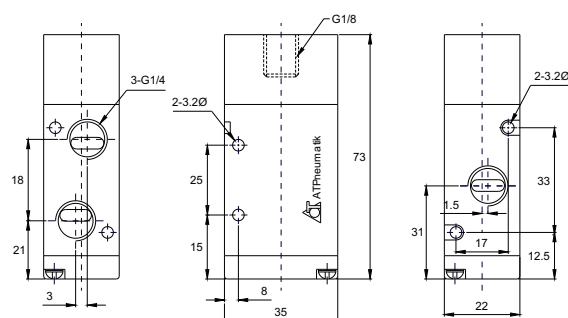
Air Pilot Valve Specification

Part Number	3A210-06	3A220-06	3A210-08	3A220-08
Orifice Size	14mm ² (CV=0.78)		16mm ² (CV=0.89)	
Port Connection	Supply, Outlet, Exhaust G 1/8"		Supply & Outlet G 1/4", Exhaust G 1/8"	
Working Medium	40 Micron Filtered Air			
Working Pressure	0.15 ~ 0.8 MPa, 1.5 ~ 8 Kg/cm ² , 22 ~ 117.6 PSI			
Maximum Test Pressure	1 MPa, 10 Kg/cm ² , 150 PSI			
Working Temperature	5 ~ 60°C, 41 ~ 140°F			
Switching Cycle	5 Cycle / Sec			

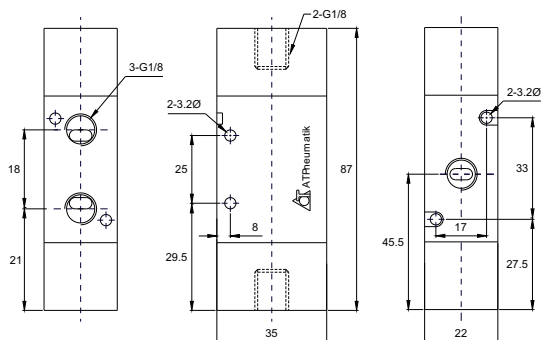
3A210-06-NO/NC 3/2 way Single Air Pilot Valve



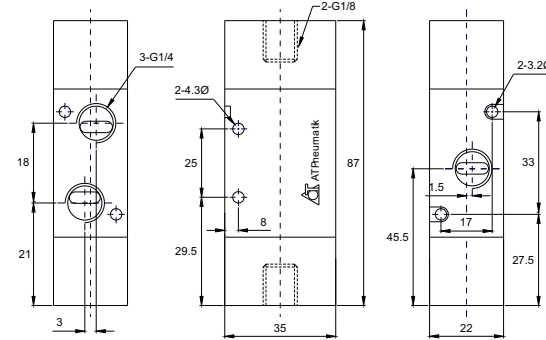
3A210-08-NO/NC 3/2 way Single Air Pilot Valve



3A220-06 3/2 way Double Air Pilot Valve



3A220-08 3/2 way Double Air Pilot Valve



Dimensions are in mm

300 Series Directional Air Pilot Valve

Single Air Pilot Valve



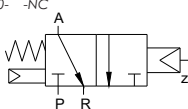
Double Air Pilot Valve



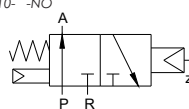
Ordering Code

- 3A3** - **10 - 08 - NO**
- 3A3** - 300 series, Directional Air Pilot Valve
- 10** - 3/2 way Single Air Pilot
- 20** - 3/2 way Double Air Pilot
- 08** - G 1/4"
- 10** - G 3/8"
- Blank** - Normally Closed
- NO** - Normally Open

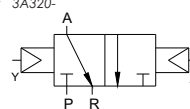
P.N.: 3A310- -NC



P.N.: 3A310- -NO



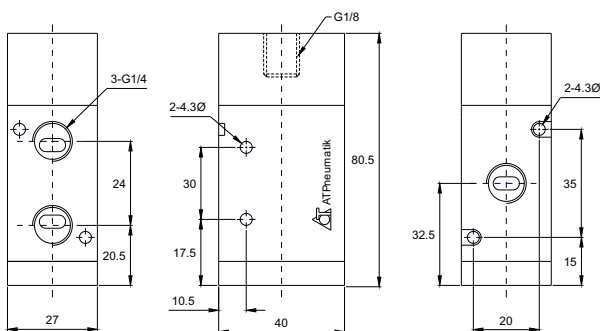
P.N.: 3A320-



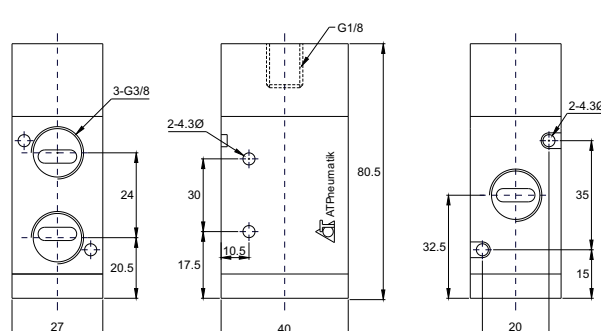
Air Pilot Valve Specification

Part Number	3A310-08	3A320-08	3A310-10	3A320-10
Orifice Size	25mm ² (CV=1.40)		30mm ² (CV=1.68)	
Port Connection	Supply, Outlet, Exhaust G 1/8"		Supply & Outlet G 1/4", Exhaust G 1/8"	
Working Medium	40 Micron Filtered Air			
Working Pressure	0.15 ~ 0.8 MPa, 1.5 ~ 8 Kg/cm ² , 22 ~ 117.6 PSI			
Maximum Test Pressure	1 MPa, 10 Kg/cm ² , 150 PSI			
Working Temperature	5 ~ 60°C, 41 ~ 140°F			
Switching Cycle	5 Cycle / Sec			

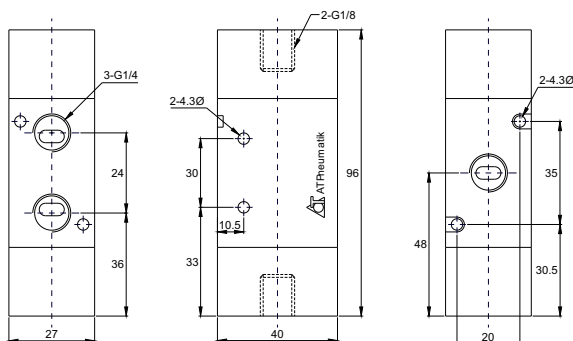
3A310-08-NO/NC 3/2 way Single Air Pilot Valve



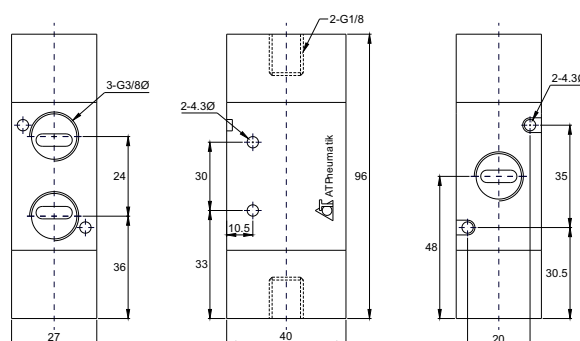
3A310-10-NO/NC 3/2 way Single Air Pilot Valve



3A320-08 3/2 way Single Air Pilot Valve



3A320-10 3/2 way Single Air Pilot Valve



Dimensions are in mm

400 Series Directional Air Pilot Valve

Single Air Pilot Valve



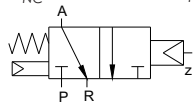
Double Air Pilot Valve



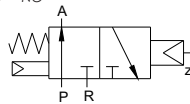
Ordering Code

- | | | | | | | |
|--------------|---|---|---|-----------|---|-----------|
| 3A4 | - | 10 | - | 15 | - | NO |
| 3A4 | - | 400 series, Directional Air Pilot Valve | | | | |
| 10 | - | 3/2 way Single Air Pilot | | | | |
| 20 | - | 3/2 way Double Air Pilot | | | | |
| 15 | - | G 1/2" | | | | |
| Blank | - | Normally Closed | | | | |
| NO | - | Normally Open | | | | |

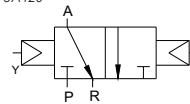
P.N.: 3A410- -NC



P.N.: 3A410- -NO



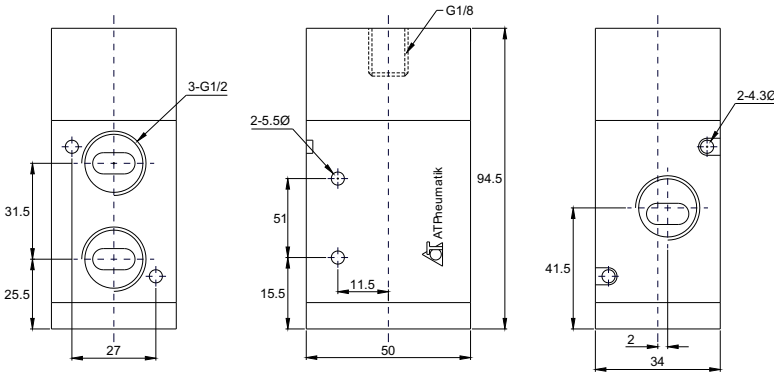
P.N.: 3A420-



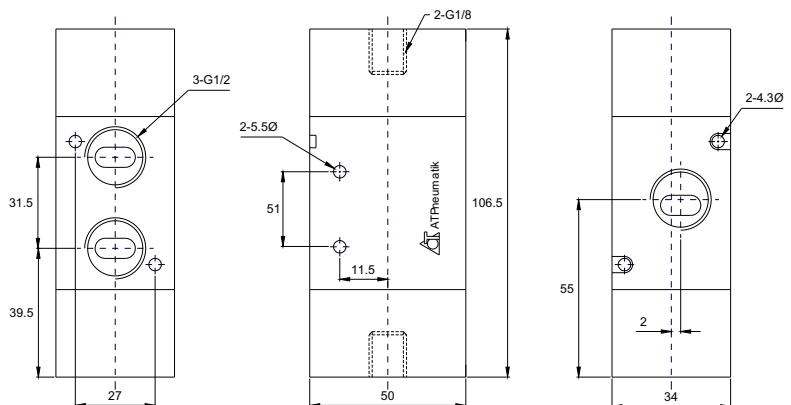
Air Pilot Valve Specification

Part Number	3A410-15	3A420-15
Orifice Size	50mm ² (CV=2.79)	
Port Connection	Supply, Outlet, Exhaust G 1/2"	
Working Medium	40 Micron Filtered Air	
Working Pressure	0.15 ~ 0.8 MPa, 1.5 ~ 8 Kg/cm ² , 22 ~ 117.6 PSI	
Maximum Test Pressure	1 MPa, 10 Kg/cm ² , 150 PSI	
Working Temperature	5 ~ 60°C, 41 ~ 140°F	
Switching Cycle	5 Cycle / Sec	

3A410-15-NO/NC 3/2 way Single Air Pilot Valve



3A420-15 3/2 way Double Air Pilot Valve



Dimensions are in mm