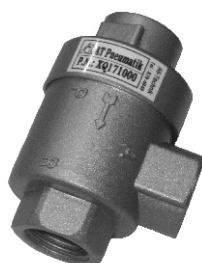


Flow Control and Quick Exhaust Valve

Flow Control Valve



Quick Exhaust Valve

Ordering Code

ASC - 08

ASC - In-Line Flow Control Valve

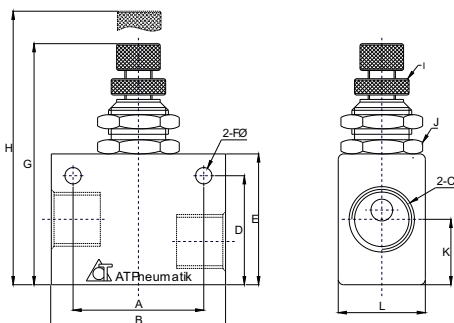
06 - G 1/8" 08 - G 1/4"
10 - G 3/8" 15 - G 1/2"

QEA - 08

QEA - Quick Exhaust Valve

06 - G 1/8" 08 - G 1/4"
10 - G 3/8" 15 - G 1/2"

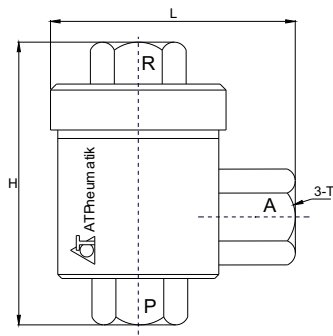
ASC - Flow Control Valve



Flow Control Specification				
Model	ASC-06	ASC-08	ASC-10	ASC-15
Port Connection	G 1/8"	G 1/4"	G 3/8"	G 1/2"
Working Medium	Air			
Working Pressure	1 MPa, 10 Kgf/cm ² , 150 PSI			
Working Temperature	5 ~ 60°C, 41 ~ 140°F			

Flow Control Valve Dimension												
Part Number	A	B	C	D	E	F	G	H	I	J	A	L
ASC-06	22	32	G1/8	22	27	4.3	49.7	56.5	M06 X 0.5	M12 X 0.75	12	18
ASC-08	26	36	G1/4	22	27	4.3	49.7	56.5	M06 X 0.5	M12 X 0.75	12	18
ASC-10	28	40	G3/8	25	30	4.3	52.7	59.5	M06 X 0.5	M12 X 0.75	13	22
ASC-15	28	40	G1/2	30	35	4.3	58.7	65.5	M06 X 0.5	M12 X 0.75	13.5	26

QEA - Quick Exhaust Valve



Quick Exhaust Specification				
Part Number	QEA-06	QEA-08	QEA-10	QEA-15
Port Connection	G 1/8"	G 1/4"	G 3/8"	G 1/2"
Flow Rate	0.9 m ³ / min	0.9 m ³ / min	2.5 m ³ / min	4.5 m ³ / min
Working Medium	Air			
Working Pressure	1 MPa, 10 Kgf/cm ² , 150 PSI			
Working Temperature	5 ~ 60°C, 41 ~ 140°F			

Quick Exhaust Dimension				
Part Number	QEA-06	QEA-08	QEA-10	QEA-15
T	G 1/8"	G 1/4"	G 3/8"	G 1/2"
H	51	51	68	77
L	45	45	62	86

Dimensions are in mm