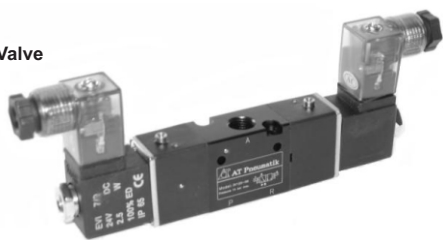


100 Series Directional Solenoid Valve

Single Solenoid Valve



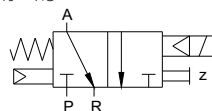
Double Solenoid Valve



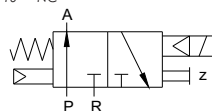
Ordering Code

3V1	-	10 - M5 - NO - AC220V - DIN
3V1	-	100 series, Directional Solenoid Valve
10	-	3/2 way Single Solenoid
20	-	3/2 way Double Solenoid
M5	-	M5 X 0.8
06	-	G 1/8"
Blank	-	Normally Close
NO	-	Normally Open
DC12V	-	12Vdc
DC24V	-	24Vdc
DC110V	-	110Vdc
AC24V	-	24Vac / 60Hz
AC110V	-	110Vac / 60Hz
AC220V	-	220Vac / 60Hz
DIN-LED	-	Socket w/ LED
DIN	-	Socket w/o LED

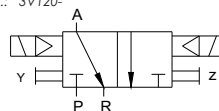
P.N.: 3V110- -NO



P.N.: 3V110- -NC



P.N.: 3V120-

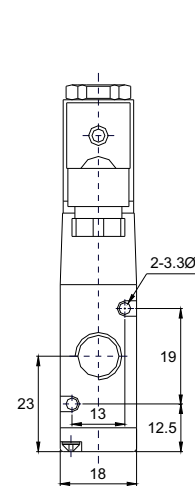
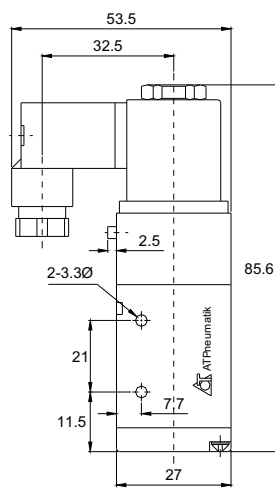
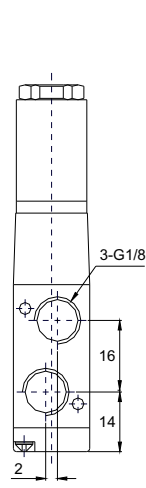
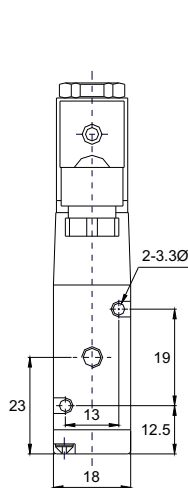
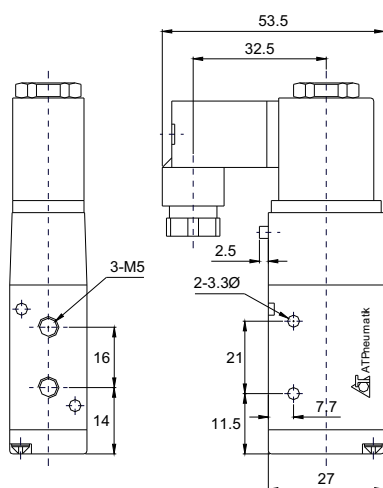


Solenoid Valve Specification

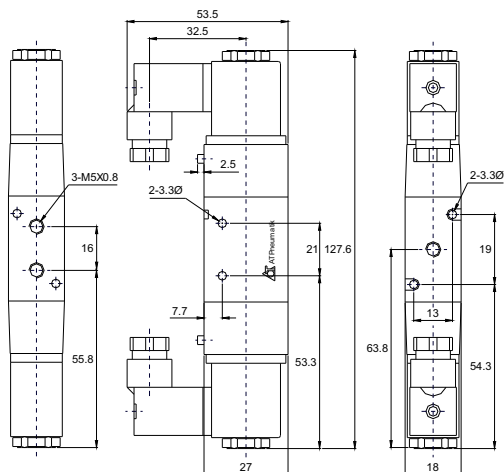
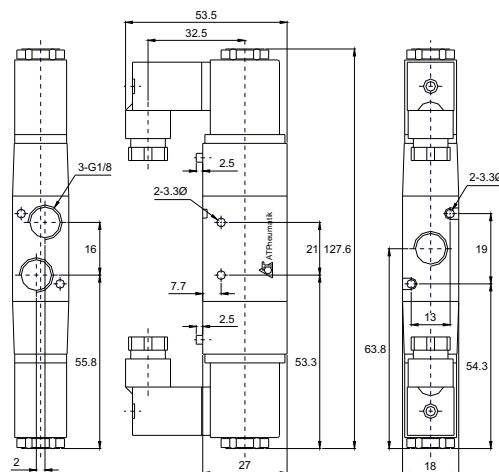
Part Number	3V110-M5	3V120-M5	3V110-06	3V120-06
Orifice Size	10mm ² (CV=0.56)		12mm ² (CV=0.67)	
Port Connection	Supply, Outlet, Exhaust M05 X 0.8		Supply, Outlet, Exhaust G 1/8"	
Working Medium	40 Micron Filtered Air			
Working Pressure	0.15 ~ 0.8 MPa, 1.5 ~ 8 Kgf/cm ² , 22 ~ 117.6 PSI			
Maximum Test Pressure	1 MPa, 10 Kgf/cm ² , 150 PSI			
Working Temperature	5 ~ 60°C, 41 ~ 140°F			
Power Consumption	AC: 2.5VA DC: 2.5W ±10%			
Protection	F Class. IP65			
Connector	Lead Wire or Socket Type (DIN)			
Switching Cycle	5 Cycle / Sec			
Response Time	0.05 Second			

3V110-M5-NO/NC 3/2 way Single Solenoid Valve

3V110-06-NO/NC 3/2 way Single Solenoid Valve



Dimensions are in mm

3V120-M5 5/2 way Double Solenoid Valve

3V120-06 5/2 way Double Solenoid Valve


200 Series Directional Solenoid Valve

Single Solenoid Valve

Double Solenoid Valve


Ordering Code

3V2 - 10 - 06 - NO - AC220V - DIN

3V2 - 200 series, Directional Solenoid Valve

10 - 3/2 way Single Solenoid

20 - 3/2 way Double Solenoid

06 - G 1/8"

08 - G 1/4"

Blank - Normally Close

NO - Normally Open

DC12V - 12Vdc

DC24V - 24Vdc

DC110V - 110Vdc

AC24V - 24Vac / 60hz

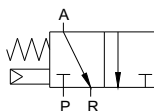
AC110V - 110Vac / 60Hz

AC220V - 220Vac / 60Hz

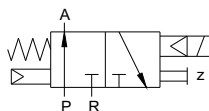
DIN-LED - Socket w/ LED

DIN - Socket w/o LED

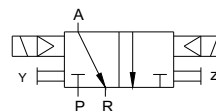
P.N.: 3V210- -NO



P.N.: 3V210- -NC



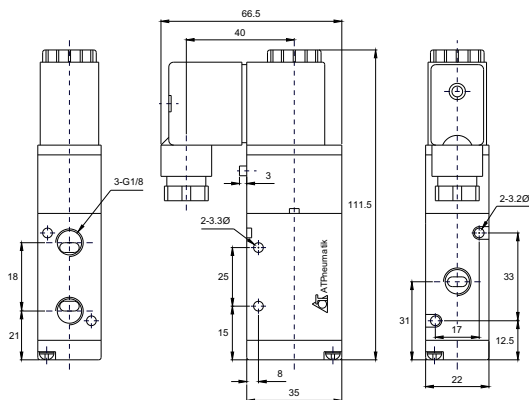
P.N.: 3V220-



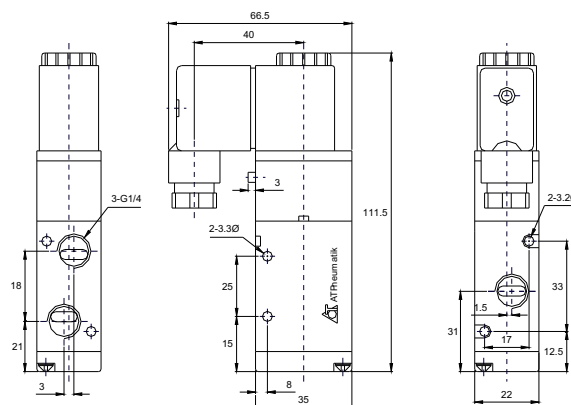
Solenoid Valve Specification				
Part Number	3V210-06	3V220-06	3V210-08	3V220-08
Orifice Size	14mm ² (CV=0.78)		16mm ² (CV=0.89)	
Port Connection	Supply, Outlet, Exhaust G 1/8"		Supply & Outlet G 1/4", Exhaust G 1/8"	
Working Medium	40 Micron Filtered Air			
Working Pressure	0.15 ~ 0.8 MPa, 1.5 ~ 8 Kg/cm ² , 22 ~ 117.6 PSI			
Maximum Test Pressure	1 MPa, 10 Kg/cm ² , 150 PSI			
Working Temperature	5 ~ 60°C, 41 ~ 140°F			
Power Consumption	AC: 5.5VA DC: 4.8W ±10%			
Protection	F Class. IP65			
Connector	Lead Wire or Socket Type (DIN)			
Switching Cycle	5 Cycle / Sec			
Response Time	0.05 Second			

Dimensions are in mm

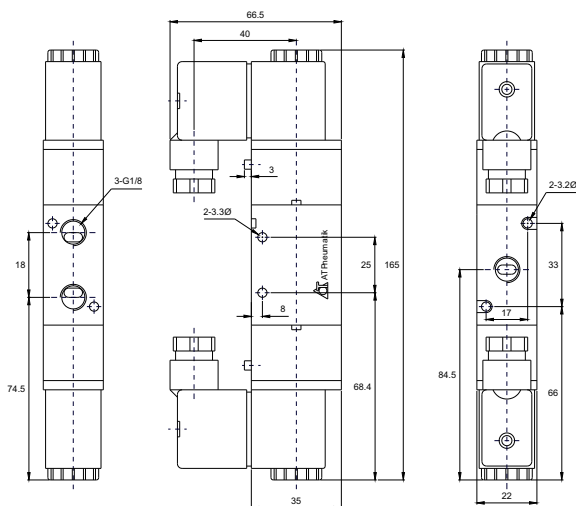
3V210-06-NO/NC 3/2 way Single Solenoid Valve



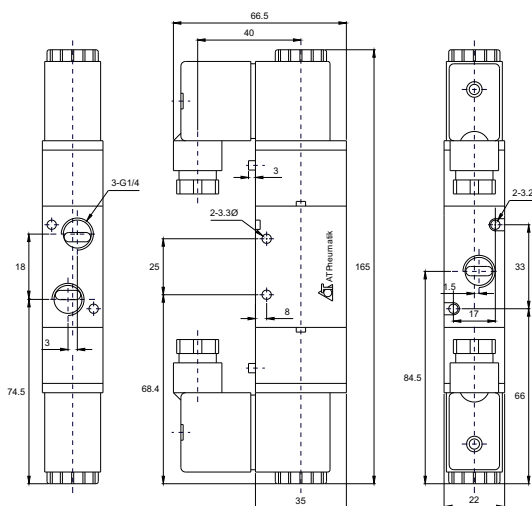
3V210-08-NO/NC 3/2 way Single Solenoid Valve



3V220-06 3/2 way Double Solenoid Valve



3V220-08 3/2 way Double Solenoid Valve



300 Series Directional Solenoid Valve

Single Solenoid Valve



Double Solenoid Valve



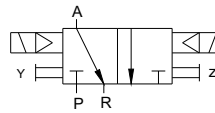
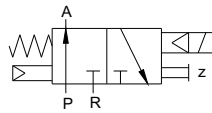
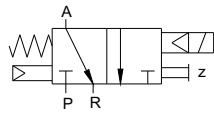
Ordering Code

3V3	-	10 - 08 - NO - AC220V - DIN	
3V3	-	300 series, Directional Solenoid Valve	
10	-	3/2 way Single Solenoid	
20	-	3/2 way Double Solenoid	
08	-	G 1/4"	
10	-	G 3/8"	
Blank	-	Normally Close	
NO	-	Normally Open	
DC12V	-	12Vdc	AC24V - 24Vac / 60Hz
DC24V	-	24Vdc	AC110V - 110Vac / 60Hz
DC110V	-	110Vdc	AC220V - 220Vac / 60Hz
DIN-LED	-	Socket w/ LED	DIN - Socket w/o LED

P.N.: 3V310-NO

P.N.: 3V310-NC

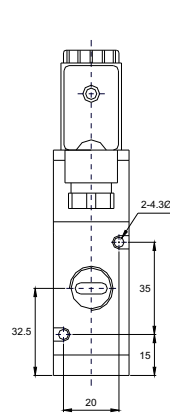
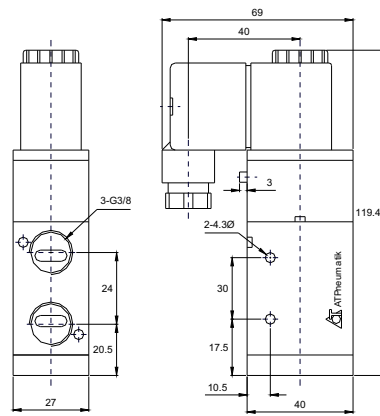
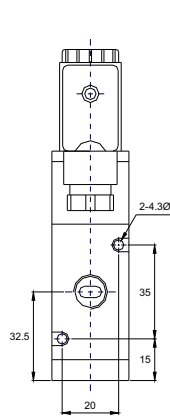
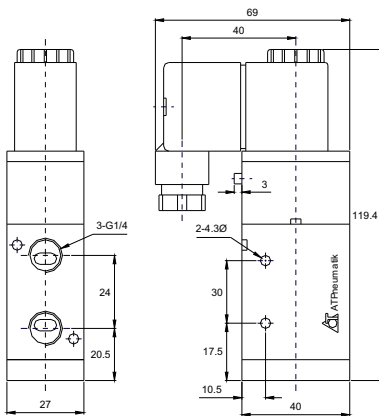
P.N.: 3V320-



Solenoid Valve Specification				
Part Number	3V310-08	3V320-08	3V310-10	3V320-10
Orifice Size	25mm ² (CV=1.40)		30mm ² (CV=1.68)	
Port Connection	Supply, Outlet, Exhaust G 1/4"		Supply & Outlet G 3/8", Exhaust G 1/4"	
Working Medium	40 Micron Filtered Air			
Working Pressure	0.15 ~ 0.8 MPa, 1.5 ~ 8 Kgf/cm ² , 22 ~ 117.6 PSI			
Maximum Test Pressure	1 MPa, 10 Kgf/cm ² , 150 PSI			
Working Temperature	5 ~ 60°C, 41 ~ 140°F			
Power Consumption	AC: 5.5VA DC: 4.8W ±10%			
Protection	F Class. IP65			
Connector	Lead Wire or Socket Type (DIN)			
Switching Cycle	5 Cycle / Sec			
Response Time	0.05 Second			

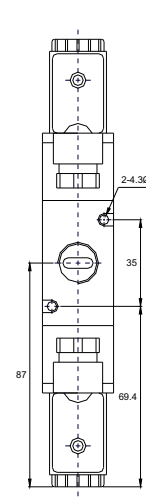
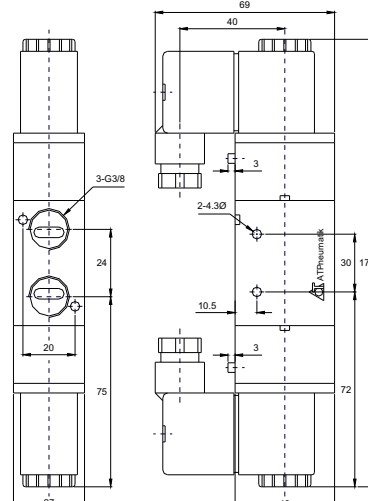
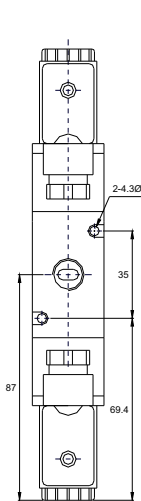
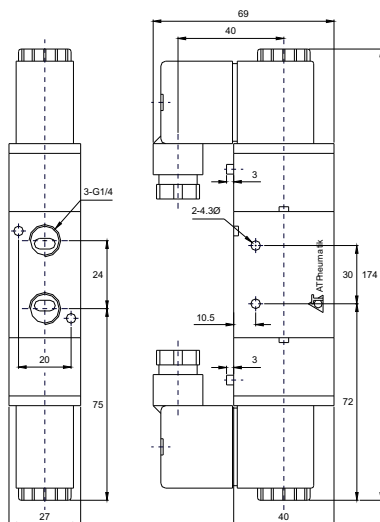
3V310-08-NO/NC 3/2 way Single Solenoid Valve

3V310-10-NO/NC 3/2 way Single Solenoid Valve



3V320-08 5/2 way Double Solenoid Valve

3V320-10 5/2 way Double Solenoid Valve



Dimensions are in mm

400 Series Directional Solenoid Valve

Single Solenoid Valve



Double Solenoid Valve



Ordering Code

3V4 - **10 - 15 - NO - AC220V - DIN**

3V4 - 400 series, Directional Solenoid Valve

10 - 3/2 way Single Solenoid

20 - 3/2 way Double Solenoid

15 - G 1/2"

Blank - Normally Close

NO - Normally Open

DC12V - 12Vdc

DC24V - 24Vdc

DC110V - 110Vdc

AC24V - 24Vac / 60Hz

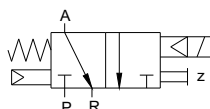
AC110V - 110Vac / 60Hz

AC220V - 220Vac / 60Hz

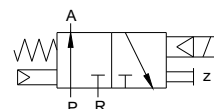
DIN-LED - Socket w/ LED

DIN - Socket w/o LED

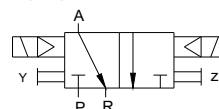
P.N.: 3V410- -NO



P.N.: 3V410- -NC

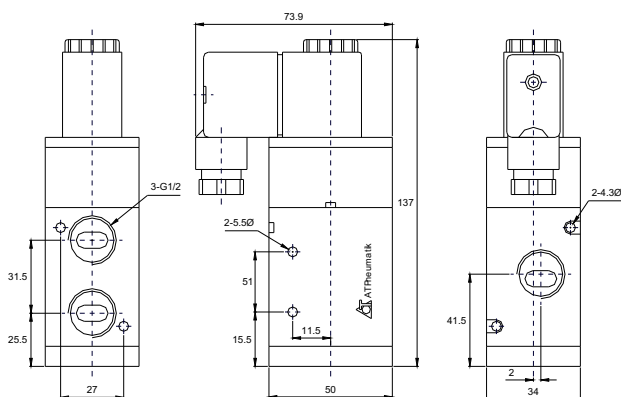


P.N.: 3V420-

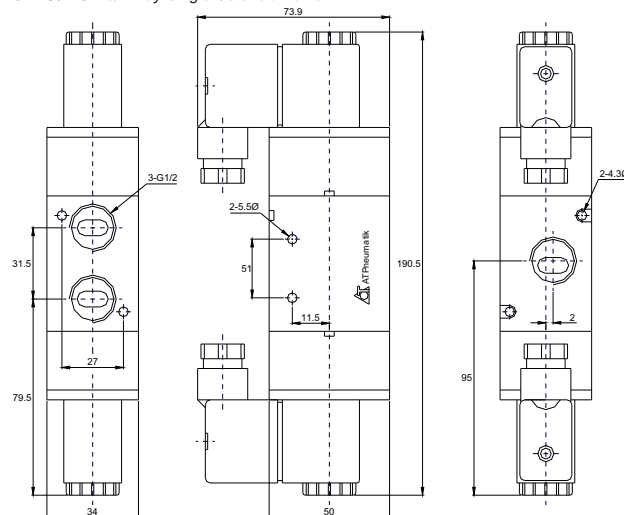


Solenoid Valve Specification		
Part Number	3V410-15	3V420-15
Power Consumption	AC: 5.5VA DC: 4.8W ±10%	
Protection	F Class. IP65	
Connector	Lead Wire or Socket Type (DIN)	
Orifice Size	50mm ² (CV=2.79)	
Port Connection	Supply, Outlet, Exhaust G 1/2"	
Working Medium	40 Micron Filtered Air	
Working Pressure	0.15 ~ 0.8 MPa, 1.5 ~ 8 Kg/cm ² , 22 ~ 117.6 PSI	
Maximum Test Pressure	1 MPa, 10 Kg/cm ² , 150 PSI	
Working Temperature	5 ~ 60°C, 41 ~ 140°F	
Switching Cycle	5 Cycle / Sec	
Response Time	0.05 Second	

3V410-15-NO/NC 3/2 way Single Solenoid Valve



3V420-15-NO/NC 3/2 way Single Solenoid Valve



Dimensions are in mm