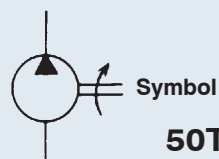


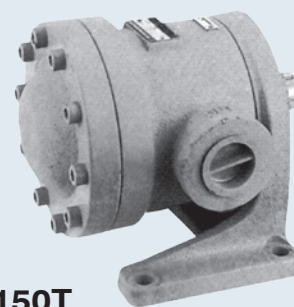
FIXED DISPLACEMENT VANE PUMP

FEATURES:

1. Designed with high capacity in all aspects.
2. Special design consideration has been given to the flow passage to prevent anti-cavitation. Extreme smooth and quiet in operation, particularly suitable for in-plant application.
3. Maximum working pressure 1000 psi (70 bar), ideal to use as low pressure pump in Hi-Lo system because of price and performance.
4. Viewing from the shaft end, the direction of rotation is clockwise. (R)



50T, 150T



How to order

50T, 150T - 23 - L - R - L - ✖

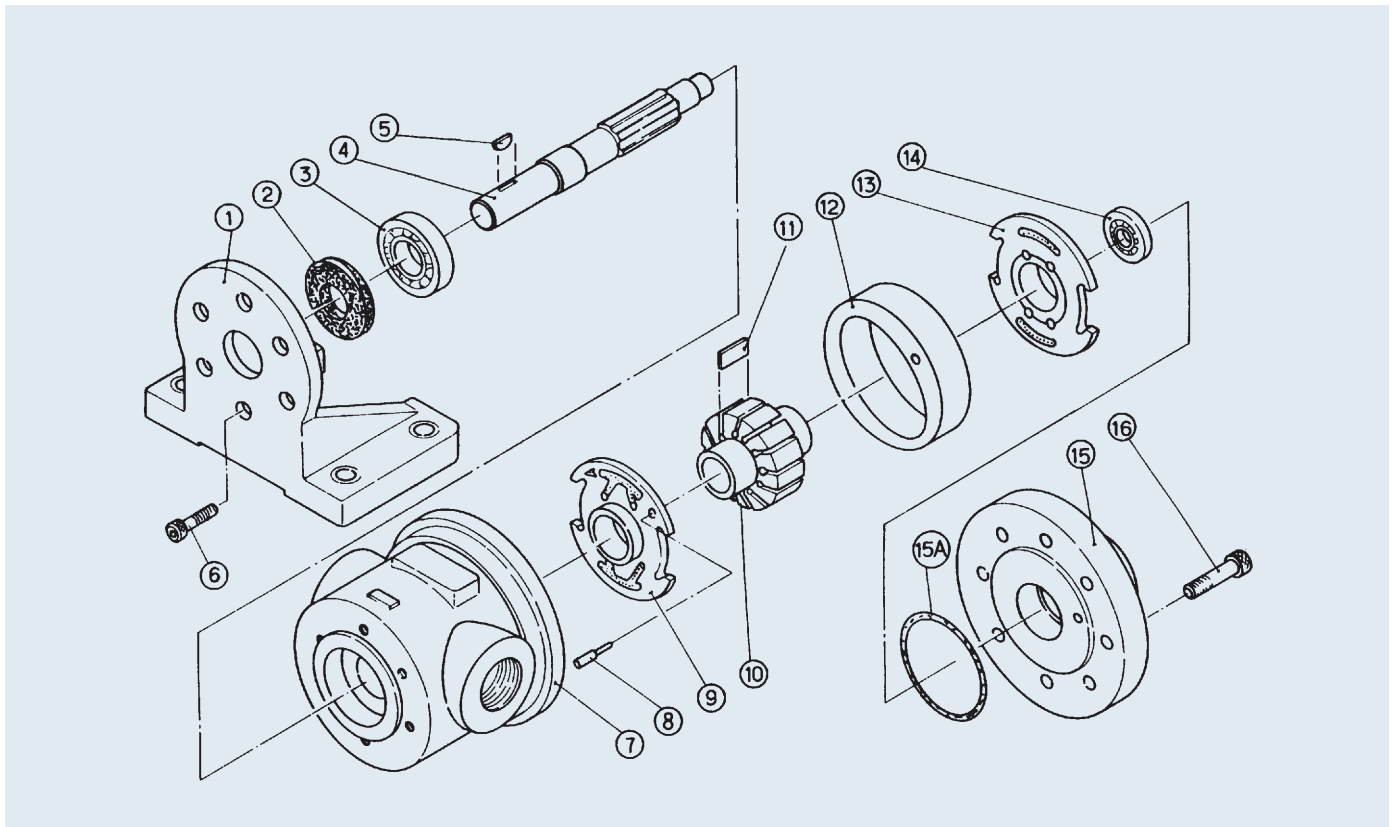
1	Low pressure single vane pump
2	Displacement cc/rev
3	Mounting type F: Flange type L: Foot type (normal)
4	Shaft rotation (viewed from shaft end) R: Clockwise L: Counter-clockwise
5	Discharge port position (viewed from shaft end) L: Left side (normal) R: Right side
6	Shaft diameter for 50T None: ø22 (standard) 01: ø19.05

Specifications

Model	Displacement cc/rev	Delivery At No-Load Pressure (lpm)				Running Speed (rpm)		Max. Pressure (bar)	Weight (kg)	
		Running Speed (rpm)				Max.	Min.		Flange Type	Foot Type
		1000	1200	1500	1800					
50T	07	–	9.0	11.2	13.5	1800	1200	105	9.5	10.5
	12	12.0	14.4	18.0	21.6	1800	950	105		
	14	14.6	17.5	21.7	26.1	1800	950	105		
	17	17.0	20.3	25.5	31.5	1800	950	105		
	19	19.2	23.0	28.8	34.6	1800	950	105		
	21	21.1	25.3	31.7	38.0	1800	950	105		
	23	23.0	27.6	34.5	41.4	1800	950	105		
	26	26.2	31.4	39.3	47.2	1800	950	105		
	30	30.1	36.1	45.2	54.0	1800	950	105		
	36	36.2	43.4	54.3	–	1500	950	70		
	40	41.5	49.8	–	1200	950	70			
150T	48	48.3	57.9	72.4	86.9	1800	900	90	24	25
	61	61.5	73.8	92.2	110.7	1800	900	90		
	75	75.2	90.6	113.2	135.9	1500	900	90		
	94	94.2	113.0	141.3	–	1500	900	70		
	116	116.3	139.6	–	–	1200	900	70		

FIXED DISPLACEMENT VANE PUMP

50T, 150T Decomposition Chart



50T parts list

Item No.	Description	Specification	Q'ty
1	Foot (or) Flange		1
2	Seal	22x47x8	1
3	Bearing	6204ZZ	1
4	Shaft		1
5	Woodruff-Key	NO.607	1
6	Socket Head Cap Screws	M10x1.5x20	6
7	Body		1
8	Lock-Pin		1
9	"A" Port Plate		1
10	Rotor		1
11	Vanes		12
12	Cam Ring		1
13	"B" Port Plate		1
14	Bearing	6200	1
15	Cover		1
15A	O-Ring	G75	1
16	Socket Head Cap Screws	M10x1.5x30	8

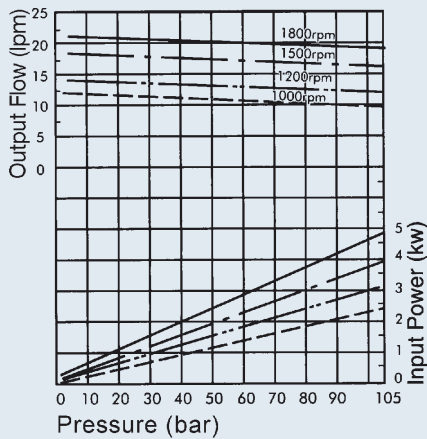
150T parts list

Item No.	Description	Specification	Q'ty
1	Foot (or) Flange		1
2	Seal	32x52x9	1
3	Bearing	6205ZZ	1
4	Shaft		1
5	Key	7x7x35	1
6	Socket Head Cap Screws	M10x1.5x20	6
7	Body		1
8	Lock-Pin		1
9	"A" Port Plate		1
10	Rotor		1
11	Vanes		12
12	Cam Ring		1
13	"B" Port Plate		1
14	Bearing	6203	1
15	Cover		1
15A	O-Ring	G120	1
16	Socket Head Cap Screws	M10x1.5x40	8

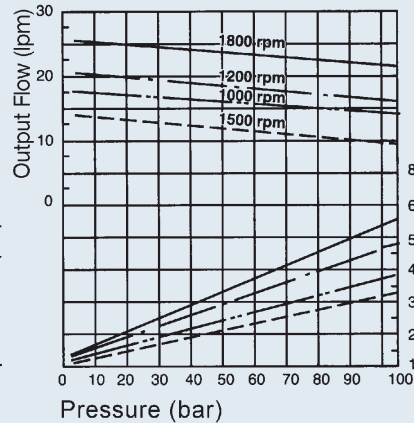
FIXED DISPLACEMENT VANE PUMP

Performance curves

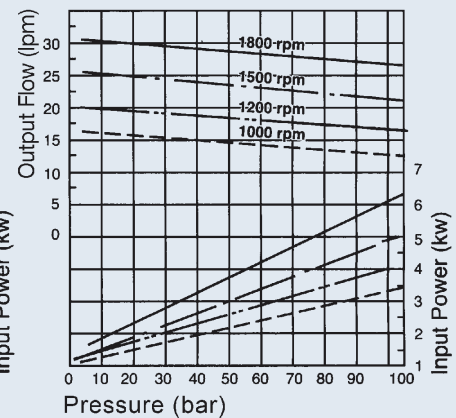
50T-12



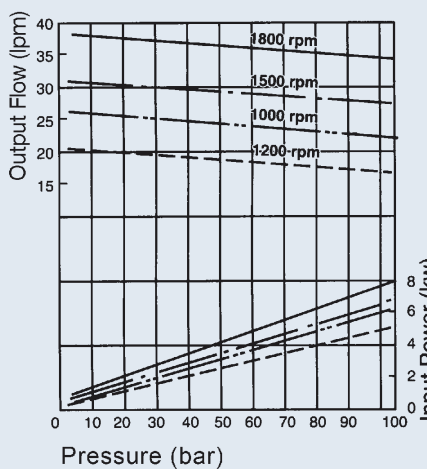
50T-14



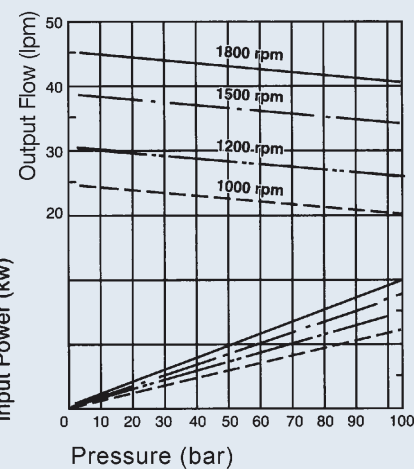
50T-17



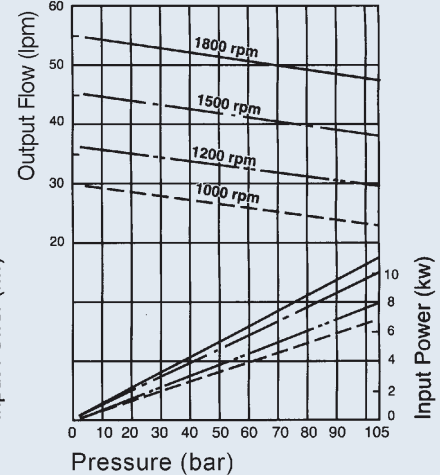
50T-21



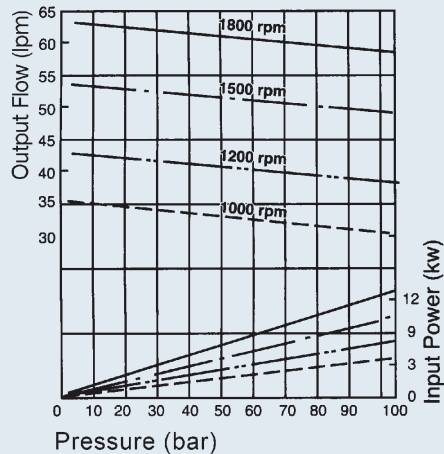
50T-23



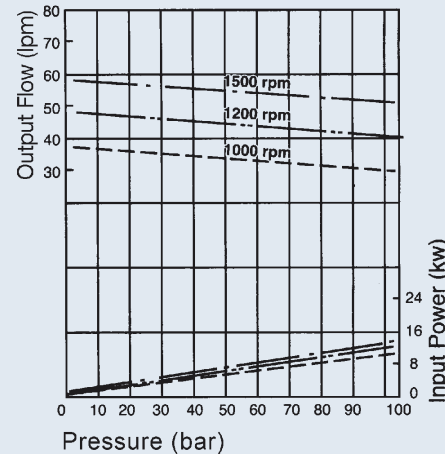
50T-30



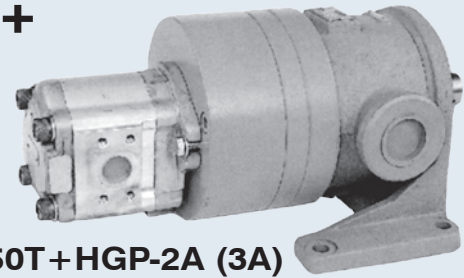
50T-36



50T-40



LOW PRESSURE VANE PUMP + HI-PRESSURE GEAR PUMP



50T+HGP-2A (3A)
150T+HGP-2A (3A)



How to order

50T, 150T - 36 - 3 - ✖ - R - 01

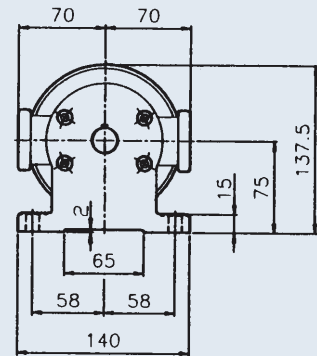
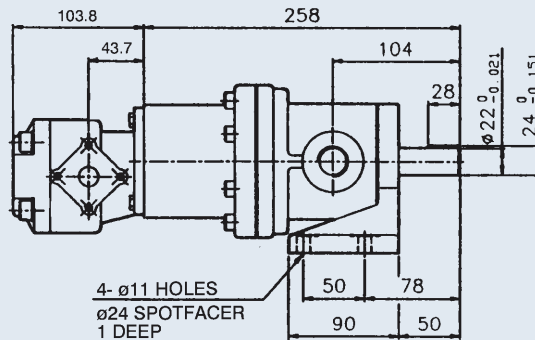
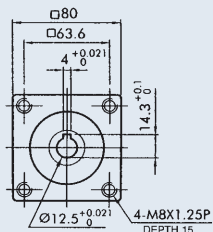
1 2 3 4 5 6

1	Model
2	Vane pump displacement 36: 36cc/rev (see page. 81)
3	Gear pump displacement 3: 3cc/rev (see page. 129 HGP-2A, page. 131 HGP-3A)
4	Mounting type F: Flange type L: Foot type (normal)
5	Shaft rotation (viewed from shaft end) R: Clockwise L: Counter-clockwise
6	Shaft diameter for 50T None: ø22 (normal) 01: ø19.05

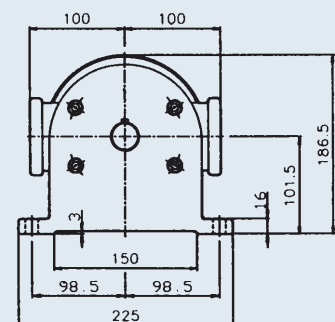
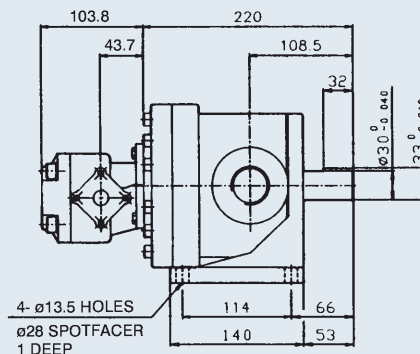
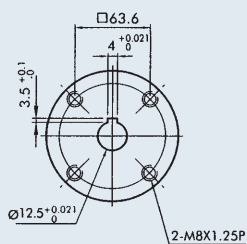
Dimensions

50T+HGP-2A

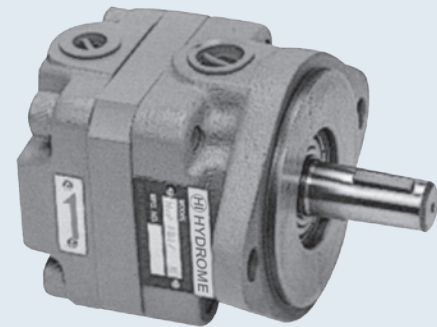
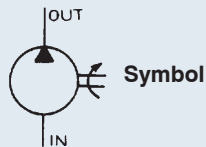
Unit:mm



150T+HGP-2A



HVP-FAI FIXED DISPLACEMENT VANE PUMP



How to order

HVP-FAI - F - 11 - R

1 2 3 4

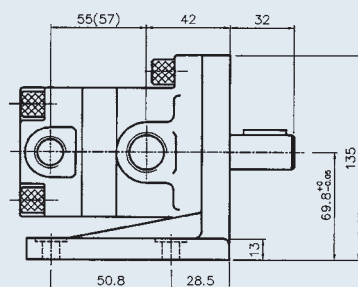
- 1 Low pressure single vane pump
- 2 Mounting type F: Flange type (normal) L: Foot type
- 3 Displacement
- 4 Shaft rotation (viewed from shaft end) R: Clockwise L: Counter-clockwise

Specifications

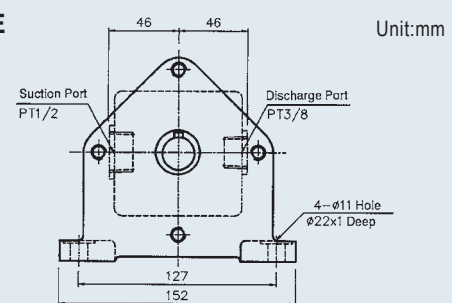
Model	Max. Pressure (bar)	Operating Characteristics At 1200 rpm With 20cst Fluid						Running Speed (rpm)		Ports Size (pt)		Weight (kg)	
		Delivery (lpm)			Input (kw)			Min.	Max.	Out	In	Foot Type	Flange Type
		5 bar	35 bar	70 bar	5 bar	35 bar	70 bar						
HVP-FAI-F5R	70	5.1	4.6	3.7	0.1	0.5	1.0	900	1800	3/8	1/2	6.5	5.6
HVP-FAI-F8R	70	9.7	8.9	7.7	0.1	0.8	1.5	900	1800	3/8	1/2	6.5	5.6
HVP-FAI-F11R	70	13.8	12.8	11.7	0.2	1.0	2.1	900	1800	3/8	1/2	6.5	5.6
HVP-FAI-F13R	70	14.9	13.8	12.8	0.2	1.3	2.5	900	1800	3/8	1/2	6.5	5.6

Dimensions

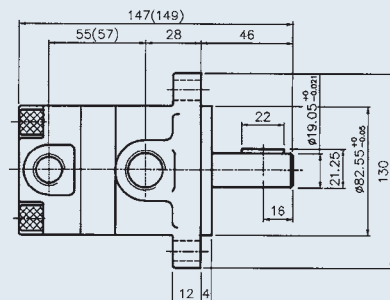
HVP-FAI-L ✱ R



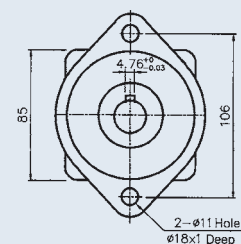
FOOT TYPE



HVP-FAI-F ✱ R

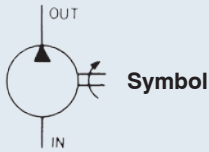
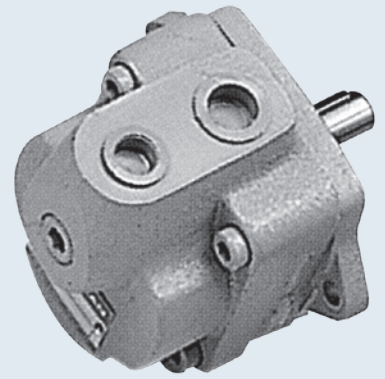


FLANGE TYPE



() FOR HVP-FAI-✱13R

DS FIXED DISPLACEMENT VANE PUMP



How to order

DS - 12 - F - R

- | | | | |
|---|--|-------------------------------------|---|
| 1 | 2 | 3 | 4 |
| 1 | Low pressure single vane pump | | |
| 2 | Displacement | | |
| 3 | Mounting type | F: Flange type(normal) L: Foot type | |
| 4 | Shaft rotation (viewed from shaft end) | R: Clockwise L: Counter-clockwise | |

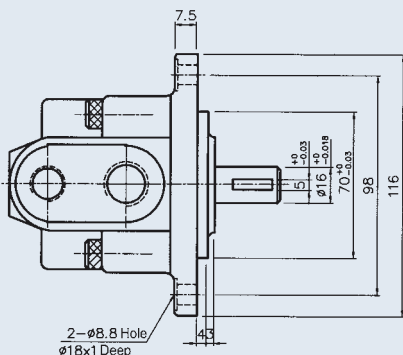
Specifications

Model	Max. Pressure (bar)	Operating Characteristics At 1800 rpm With 20 Fluid						Running Speed (rpm)		Ports Size (pt)		Weight (kg)	
		Delivery (lpm)			Input (kw)			Min.	Max.	Out	In	Foot Type	Flange Type
		0 bar	30 bar	70 bar	0 bar	30 bar	70 bar						
DS-11	70	5.0	4.5	3.9	0.2	0.55	1.1	600	2400	3/8	1/2	4.5	3.0
DS-12	70	7.7	7.2	6.5	0.3	0.75	1.5	600	2400	3/8	1/2	4.5	3.0
DS-13	70	12.6	11.8	11.0	0.4	1.05	2.1	600	2400	3/8	1/2	4.5	3.0
DS-14	70	22.1	21.6	21.0	0.6	1.65	3.4	600	2400	3/8	1/2	4.5	3.0

Dimensions

DS-✱-FR

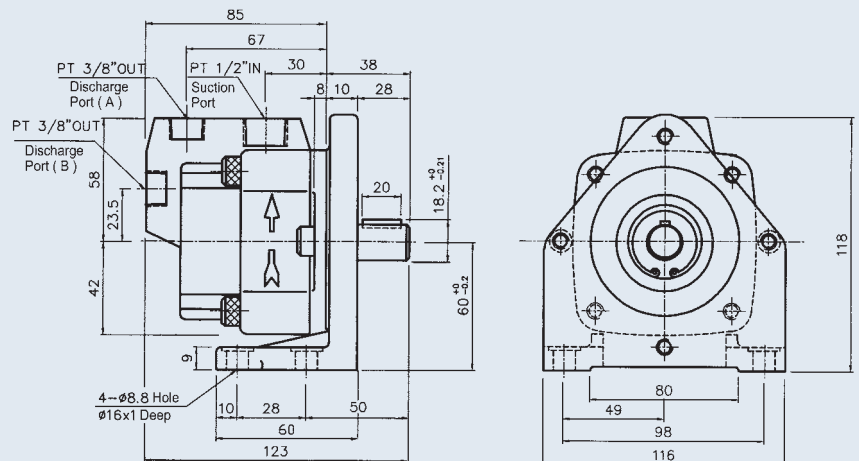
FLANGE TYPE



DS-✱-LR

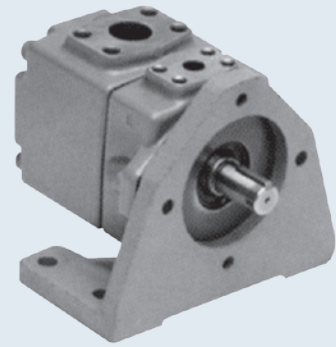
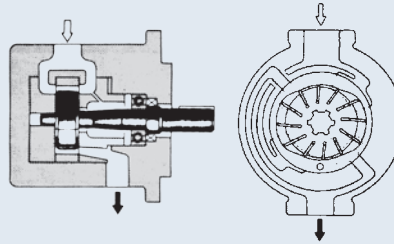
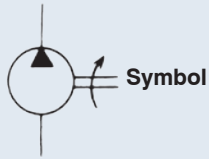
Unit:mm

FOOT TYPE



Note: The outlet (B) of the standrad type is plugged

FIXED DISPLACEMENT HI-PRESSURE SINGLE VANE PUMP



How to order

PV2R1 - 25 - F - R - A - A

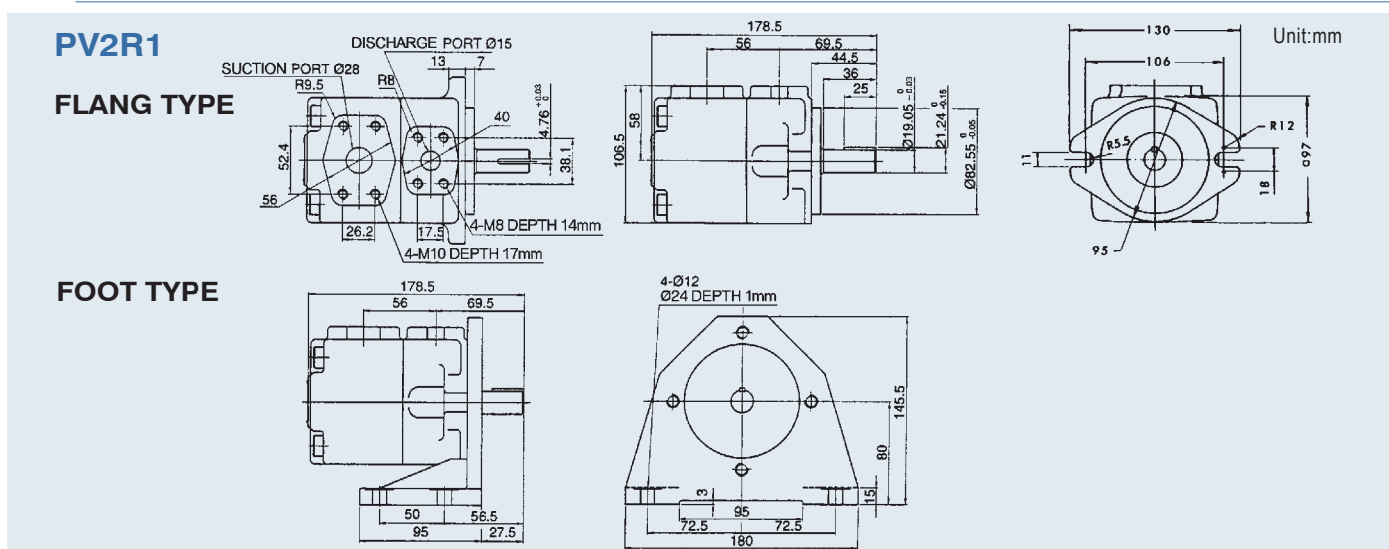
1 2 3 4 5 6

1	Model	PV2R1, PV2R2, PV2R3, PV2R4 (see page 92 VQ-45)
2	Displacement cc/rev	
3	Mounting type	F: Flange type (normal) L: Foot type
4	Shaft rotation (viewed from shaft end)	R: Clockwise L: Counter-clockwise
5	Discharge port	A: Upward (normal) B: Downward R: Right side L: Left side
6	Suction port	A: Upward (normal) B: Downward R: Right side L: Left side

Specifications

Model	Delivery (cc/rev)	Max. Pressure (bar)	Running Speed (rpm)		Weight (kg)		Model	Delivery (cc/rev)	Max. Pressure (bar)	Running Speed (rpm)		Weight (kg)	
			Max.	Min.	Flange Type	Foot Type				Max.	Min.	Flange Type	Foot Type
PV2R1-06	5.8	210	1800	750	9	11.2	PV2R2-47	47.2	210	1800	600	19	23.3
PV2R1-08	8						PV2R2-53	52.3					
PV2R1-10	9.4						PV2R2-59	58.2					
PV2R1-12	12.2						PV2R2-65	64.7					
PV2R1-14	13.7						PV2R3-60	60.3					
PV2R1-17	16.6						PV2R3-66	66.4					
PV2R1-19	18.6						PV2R3-76	76.4					
PV2R1-23	22.7						PV2R3-82	82.2					
PV2R1-25	25.3						PV2R3-88	88.3					
PV2R1-31	31						PV2R3-94	93.6					
PV2R2-26	26.2	210	600	19	23.3	PV2R3-108	108.2						
PV2R2-33	33					PV2R3-116	115.6						
PV2R2-38	38					PV2R3-126	125.6						
PV2R2-41	41.3												

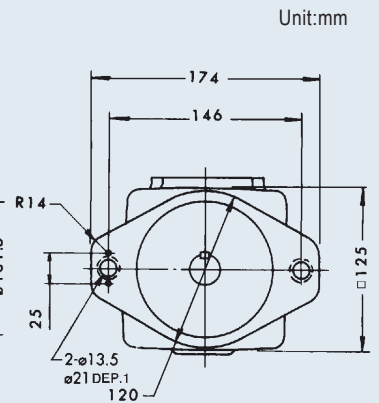
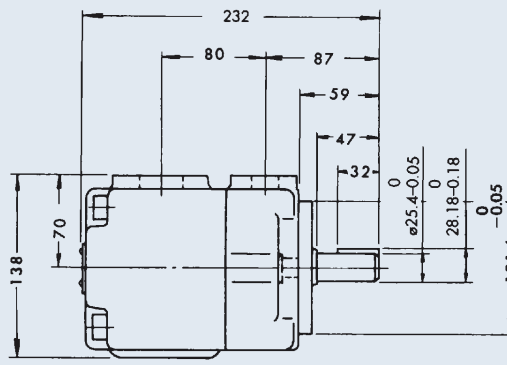
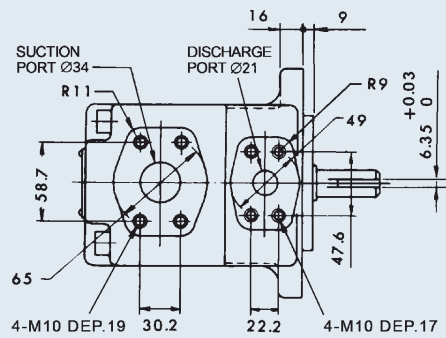
Dimensions



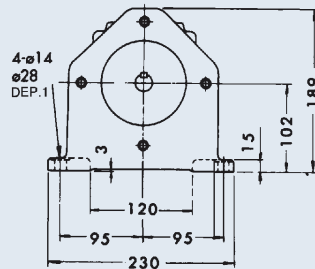
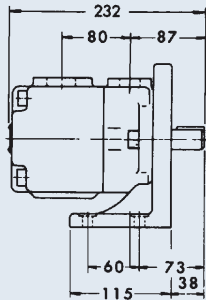
FIXED DISPLACEMENT HI-PRESSURE SINGLE VANE PUMP

Dimensions

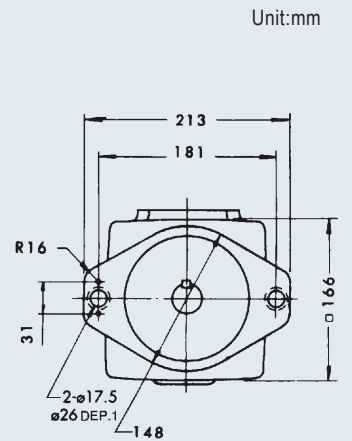
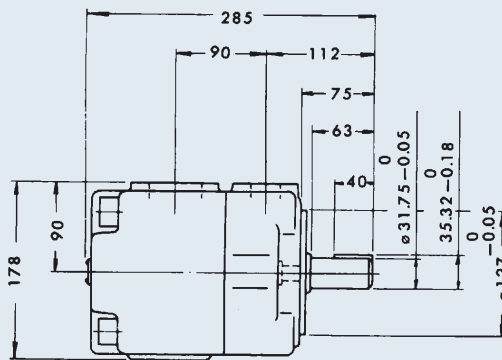
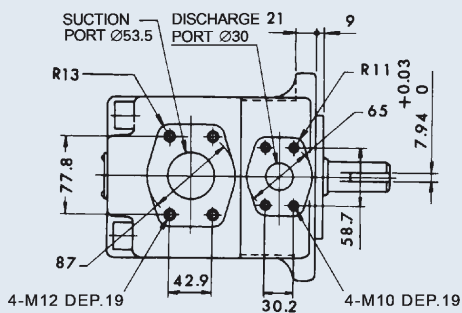
PV2R2 FLANGE TYPE



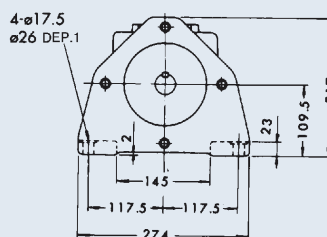
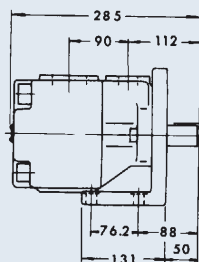
FOOT TYPE



PV2R3 FLANGE TYPE



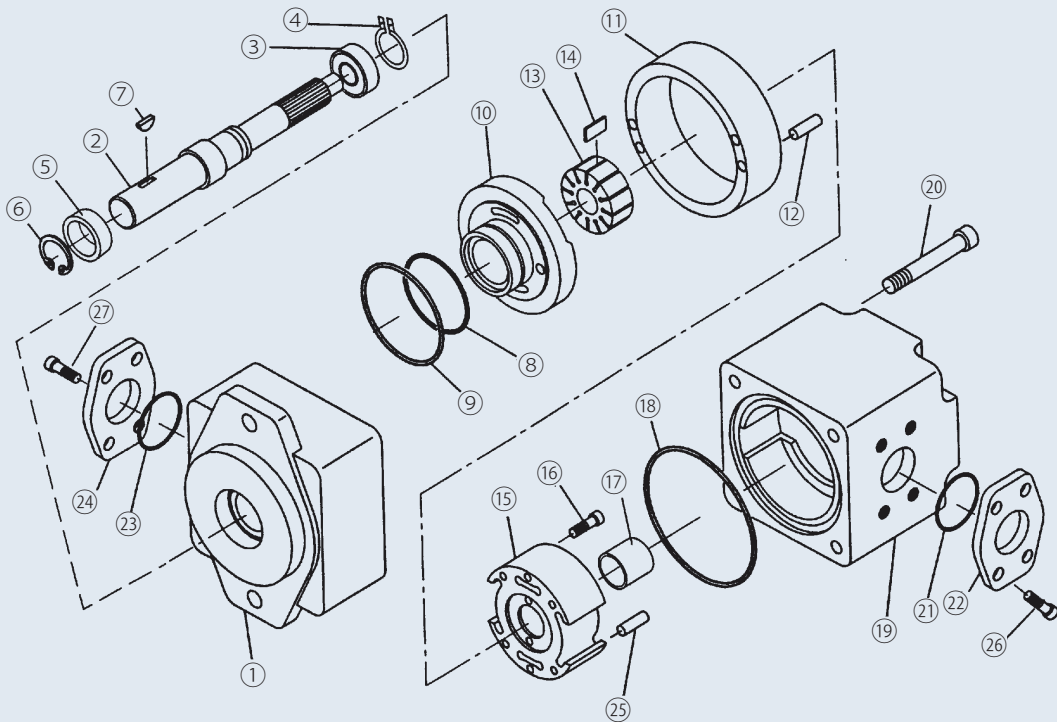
FOOT TYPE



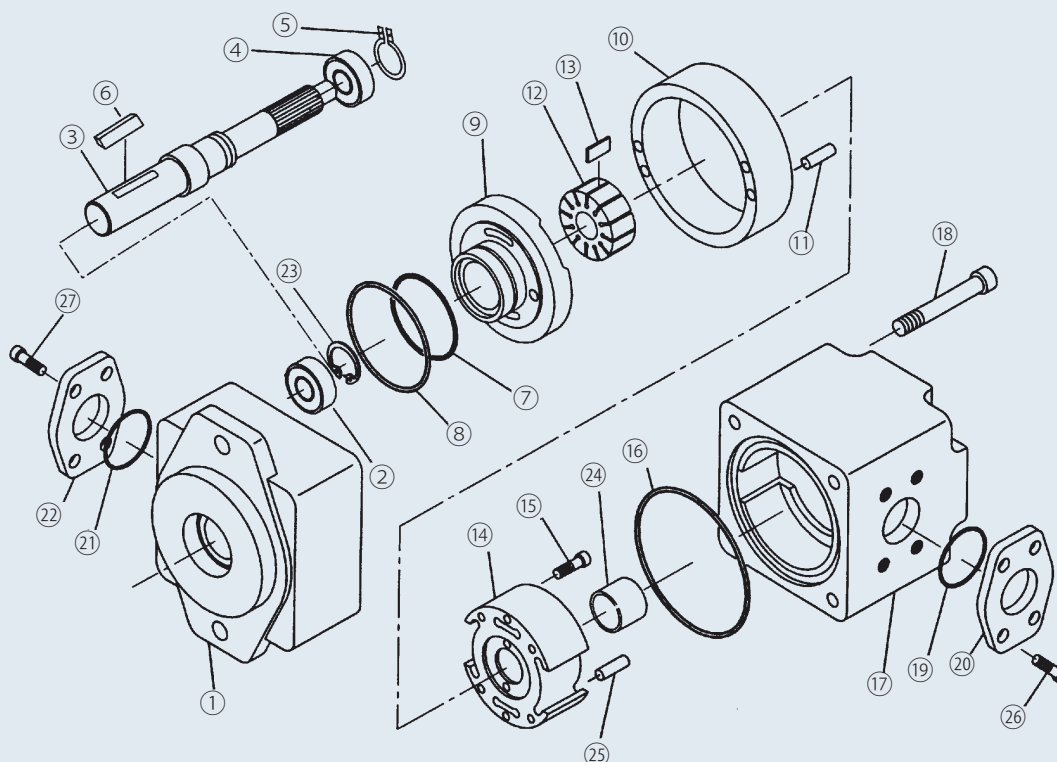
FIXED DISPLACEMENT HI-PRESSURE SINGLE VANE PUMP

Decomposition Chart

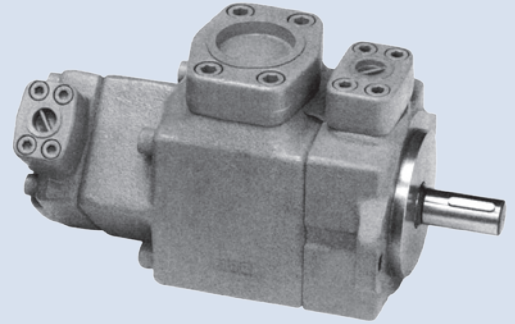
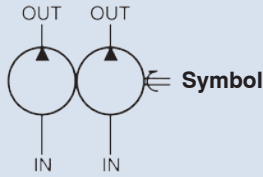
PV2R1



PV2R2 PV2R3



FIXED DISPLACEMENT HI-PRESSURE DOUBLE VANE PUMP



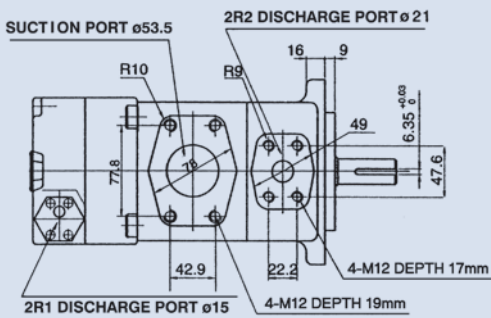
How to order

PV2R12, PV2R23 - ❄ - ❄ - F - R - A - A - A

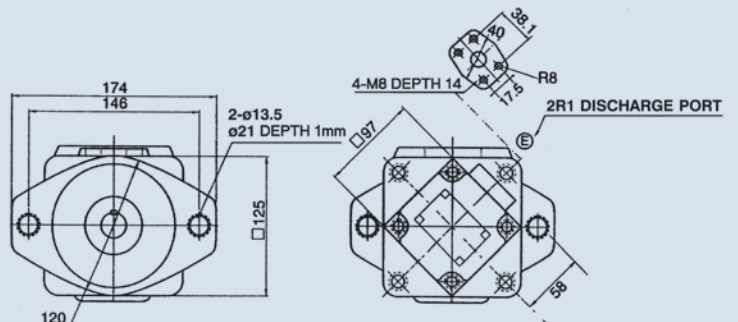
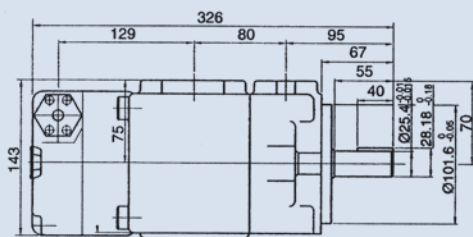
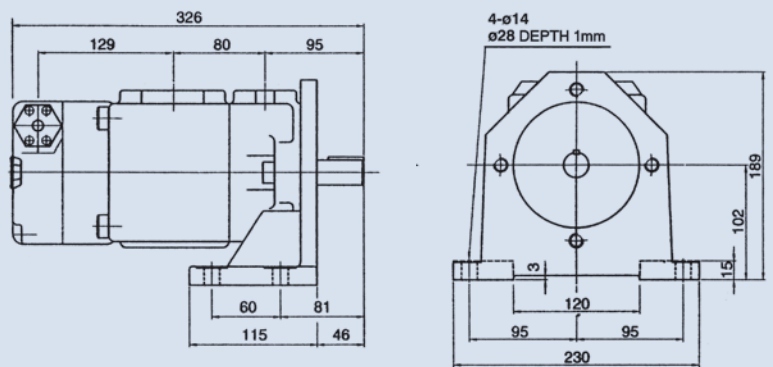
	1	2	3	4	5	6	7	8
1	Model	PV2R12 (P1: PV2R2, P2: PV2R1)	PV2R13 (P1: PV2R3, P2: PV2R1)	PV2R23 (P1: PV2R3, P2: PV2R2)				
2	P1: Displacement cc/rev (see page 83)							
3	P2: Displacement cc/rev (see page 83)							
4	Mounting type	F: Flange type (normal)	L: Foot type					
5	Shaft rotation (viewed from shaft end)	R: Clockwise	L: Counter-clockwise					
6	P1: Discharge port	A: Upward (normal)	B: Downward	R: Right side	L: Left side			
7	Suction port	A: Upward (normal)	B: Downward	R: Right side	L: Left side			
8	P2: Discharge port	A: Upward (normal)	B: Downward	R: Right side	L: Left side	E: Left upward 45°		

Dimensions

PV2R12 FLANGE TYPE

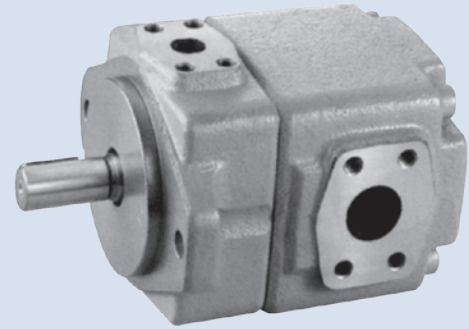
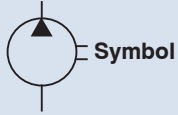


FOOT TYPE



Unit:mm

FIXED DISPLACEMENT HI-PRESSURE SINGLE VANE PUMP



How to order

VQ25 - 18 - F - R - A - A - 01

1	2	3	4	5	6	7
1	Model					
2	Displacement cc/rev					
3	Mounting type F: Flange type (normal) L: Foot type					
4	Shaft rotation (viewed from shaft end) R: Clockwise L: Counter-clockwise					
5	Discharge port (viewed from shaft end) A: Upward (normal) B: Downward R: Right side L: Left side					
6	Suction port (viewed from shaft end) A: Upward (normal) B: Downward R: Right side L: Left side					
7	Shaft type 01: Normal					

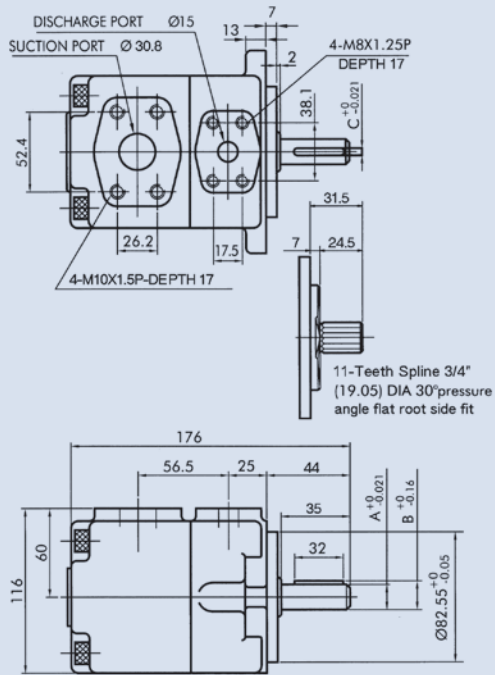
Specifications

Model	Displacement (cc/rev)	Delivery At No-load Pressure (lpm)				Running Speed (rpm)		Max. Pressure (bar)	Weight (kg)	
		Running Speed (rpm)				Max.	Min.		Flange Type	Foot Type
		1000	1200	1500	1800					
VQ15	06	6.2	7.4	9.3	11.2	1800	1200	230	10.3	12.7
	08	8.1	9.7	12.1	14.6					
	11	11.2	13.4	16.8	20.1					
	14	14.3	17.1	21.5	25.7					
	17	17.1	20.5	25.6	30.7					
VQ20	19	19.2	23	28.8	34.5	1500	800	200	12.3	17
	23	23.3	27.9	34.9	41.9					
	26	26.1	31.1	39.1	46.9					
	31	31.1	37.3	46.6	—					
VQ25	38	38.1	45.6	—	—	1800	230	16.7	21.4	—
	18	18.1	21.7	27.2	32.6					
	22	22.1	26.5	33.2	39.8					
	26	26.2	31.4	39.3	47.1					
	32	32.1	38.5	48.1	57.7					
SVQ25	38	38.2	45.8	57.3	68.7	1500	600	200	23	31
	43	43.2	51.8	64.8	77.7					
	47	47.1	56.5	70	85					
	52	52.3	62.7	78.4	94.1					
	60	60.2	72.7	90.3	108.3					
VQ35	65	65.3	78.3	97.9	117.5	1800	230	16.7	21.4	—
	75	75	90	112.5	—					
	60	60.3	72.3	90.4	108.5					
	66	66.4	79.6	99.6	119.5					
	76	76.3	91.5	114.4	137.3					
SVQ35	82	82.2	98.6	123.3	147.9	1500	200	33	41	—
	88	88.3	105.9	132.4	158.9					
	94	94.5	113.4	141.7	170.1					
	108	108.2	129.8	162.3	194.4					
	116	116.1	139.3	174.1	208.9					
VQ45	125	124.6	149.5	186.9	—	1800	600	200	52	60
	136	136.8	164	204	246					
	156	156.2	188	234	280					
SVQ45	189	189.5	227	284	340	1500	1500	600	66.5	94.5
	200	200	240	300	360					
	216	216	260	324	—					
DVQ45	237	237	285	355	—	1800	600	200	61	89
	237	237	285	355	—					

FIXED DISPLACEMENT HI-PRESSURE SINGLE VANE PUMP

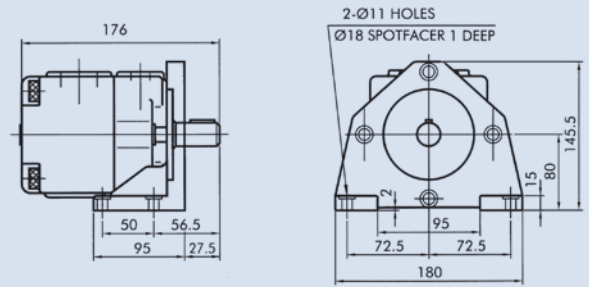
Dimensions

VQ15

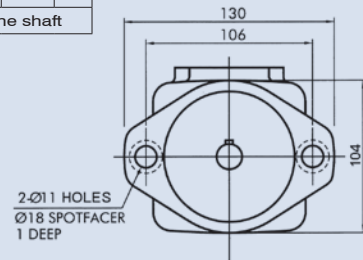


FOOT TYPE

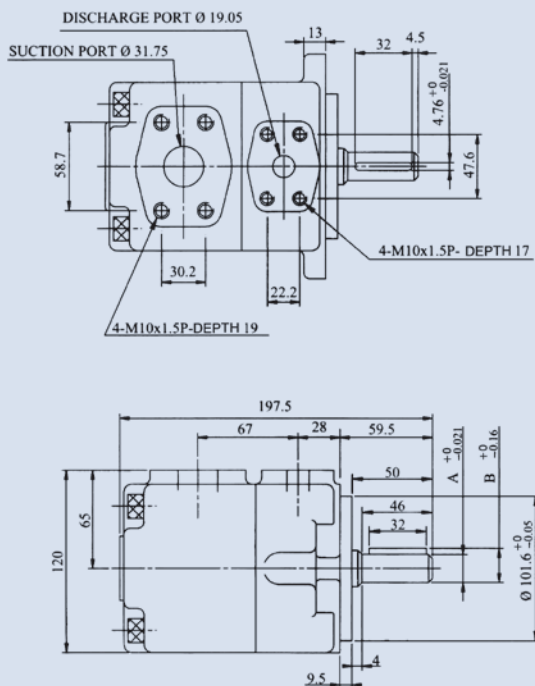
Unit:mm



	A	B	C
NO.01-Shaft	$\varnothing 19.05$	21.24	4.76
NO.03-Shaft	Spline shaft		

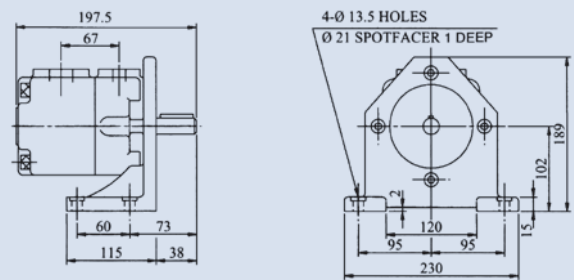


VQ20

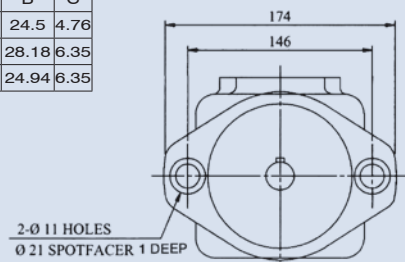


FOOT TYPE

Unit:mm



	A	B	C
NO.01-Shaft	$\varnothing 22.23$	24.5	4.76
NO.02-Shaft	$\varnothing 25.4$	28.18	6.35
NO.03-Shaft	$\varnothing 22.23$	24.94	6.35



FIXED DISPLACEMENT HI-PRESSURE SINGLE VANE PUMP

Dimensions

VQ25

DISCHARGE PORT $\varnothing 25$
SUCTION PORT $\varnothing 38$
4-M12X1.75P DEPTH 19
4-M10X1.5P DEPTH 17
C $+0$ -0.021
69.9
35.7
26.2
13
32 4.5
52.4
40.7
7.9
24.5
1.5X45°
 $\varnothing 22.23$
16/32 d.p. -13 teeth
30° pressure angle flat root side fit.

222
83 38.1 59.5
A $+0$ -0.021
B $+0$ -0.16
C $+0$ -0.05
138
76
50
46
9.5 4

FOOT TYPE

Unit:mm

4- $\varnothing 13.5$ HOLES
 $\varnothing 21$ SPOTFACER 1 DEEP
222
83 38.1 59.5
189
102
15
60 73
115 38
95 120 95
230

	A	B	C
NO.01-Shaft	$\varnothing 22.23$	24.5	6.35
NO.02-Shaft	$\varnothing 25.4$	28.18	6.35
NO.03-Shaft	$\varnothing 30$	33	7
NO.04-Shaft	Spline shaft		
NO.W-Shaft	$\varnothing 28$	30.8	6.35

171
146
122
2- $\varnothing 13.5$ HOLES
 $\varnothing 21$ SPOTFACER 1 DEEP

SVQ25

DISCHARGE PORT P1 $\varnothing 25$
SUCTION PORT $\varnothing 39$
4-M10X1.5P-DEPTH 18
4-M12X1.75P-DEPTH 19
C $+0$ -0.021
69.9
35.7
26.2
32
52.4
40.7
7.9
24.5
1.5X45°
 $\varnothing 22.23$
16/32 d.p. -13 teeth
30° pressure angle flat root side fit.

238
83 38.1 59.5
A $+0$ -0.021
B $+0$ -0.016
C $+0$ -0.05
127
9.5 3

FOOT TYPE

Unit:mm

4- $\varnothing 17.5$ HOLES
 $\varnothing 26$ SPOTFACER 1 DEEP
238
83 38.1 59.5
217
109.5
76.2 73
131 34.5
117.5 151 117.5
274

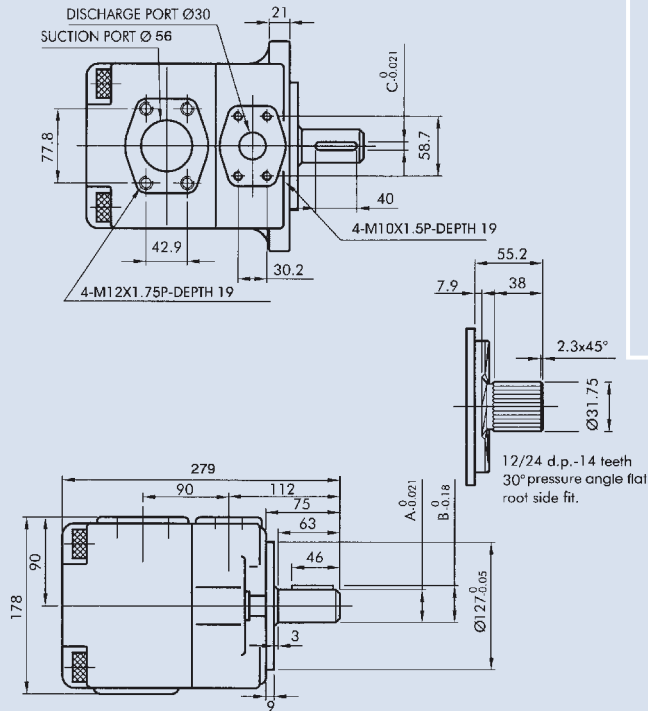
	A	B	C
NO.01-Shaft	$\varnothing 22.23$	24.5	6.35
NO.02-Shaft	$\varnothing 25.4$	28.18	6.35
NO.03-Shaft	$\varnothing 30$	33	7
NO.04-Shaft	Spline shaft		
NO.W-Shaft	$\varnothing 28$	30.8	6.35

211
181
80
2- $\varnothing 17.5$ HOLES
 $\varnothing 26$ SPOTFACER 1 DEEP

FIXED DISPLACEMENT HI-PRESSURE SINGLE VANE PUMP

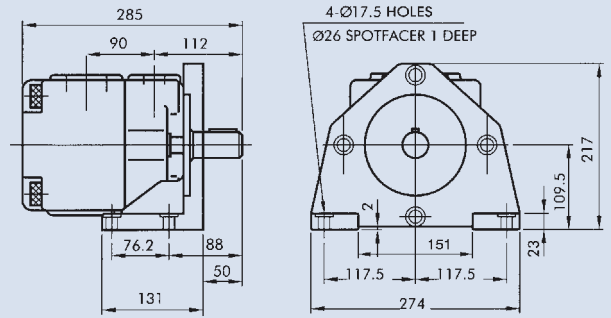
Dimensions

VQ35

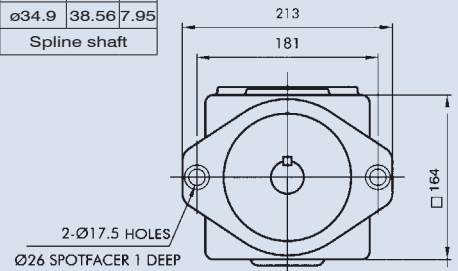


FOOT TYPE

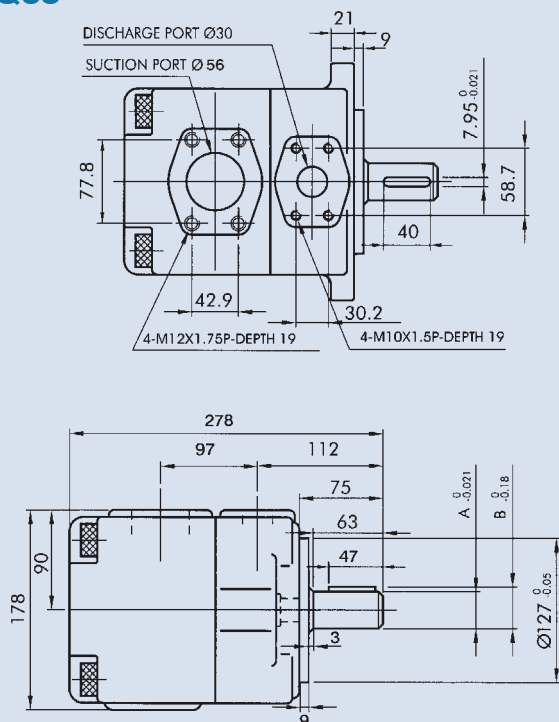
Unit:mm



	A	B	C
NO.01-Shaft	ø31.75	35.32	7.95
NO.02-Shaft	ø34.9	38.56	7.95
NO.03-Shaft	Spline shaft		

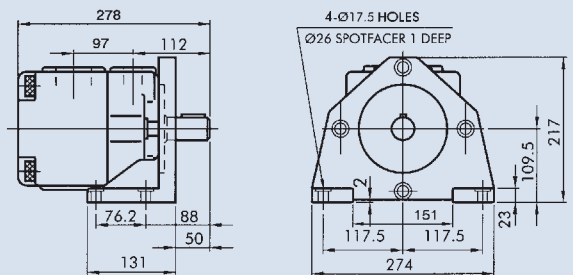


SVQ35

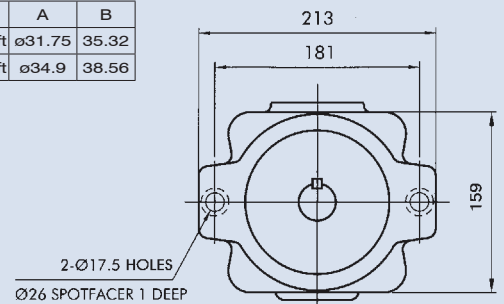


FOOT TYPE

Unit:mm



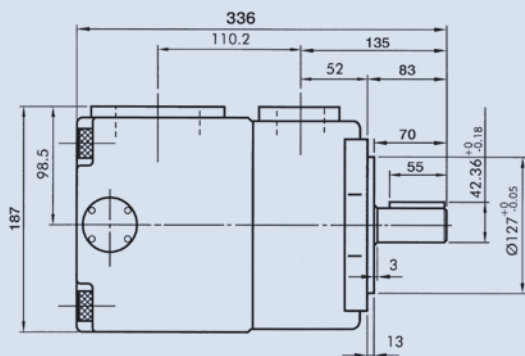
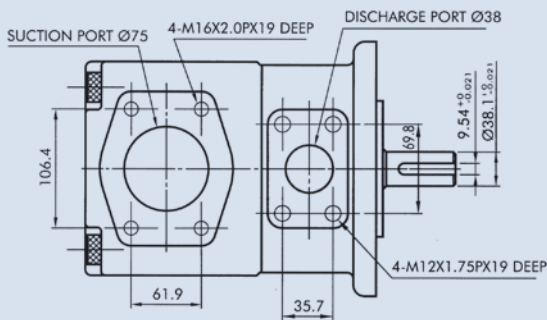
	A	B
NO.01-Shaft	ø31.75	35.32
NO.02-Shaft	ø34.9	38.56



FIXED DISPLACEMENT HI-PRESSURE SINGLE VANE PUMP

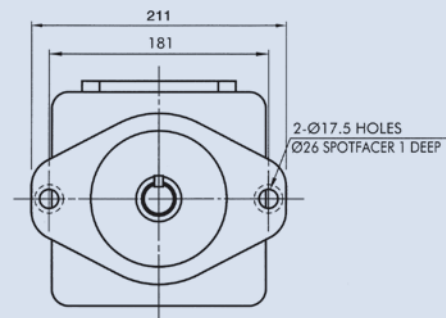
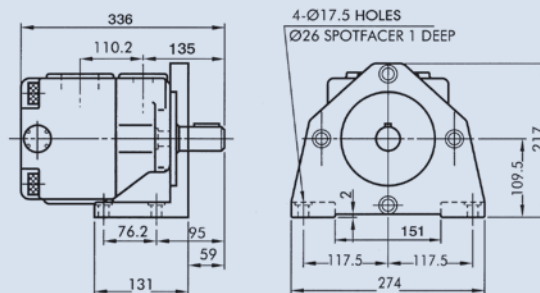
Dimensions

VQ45

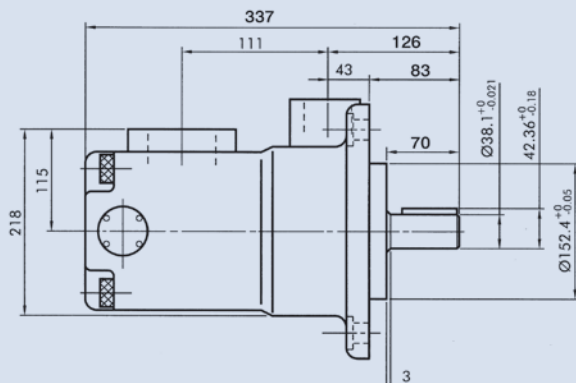
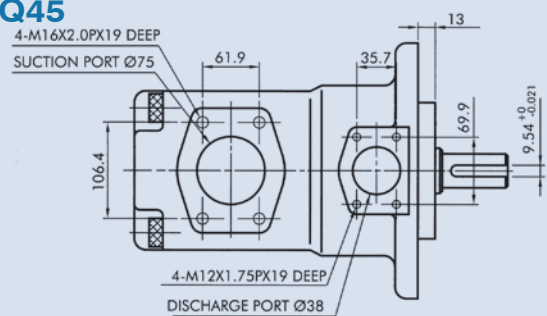


FOOT TYPE

Unit:mm

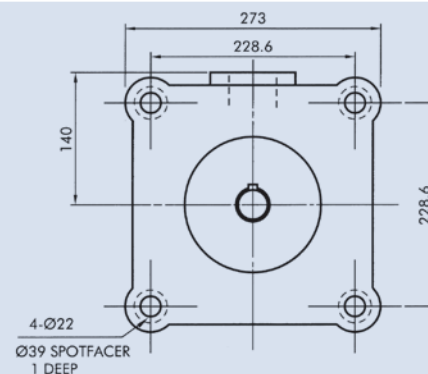
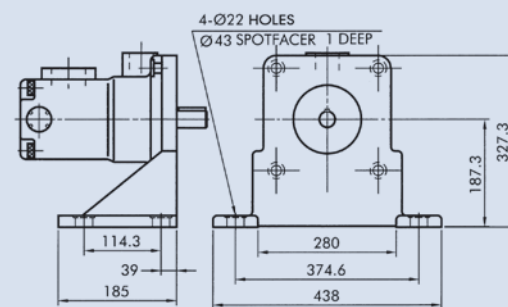


DVQ45



FOOT TYPE

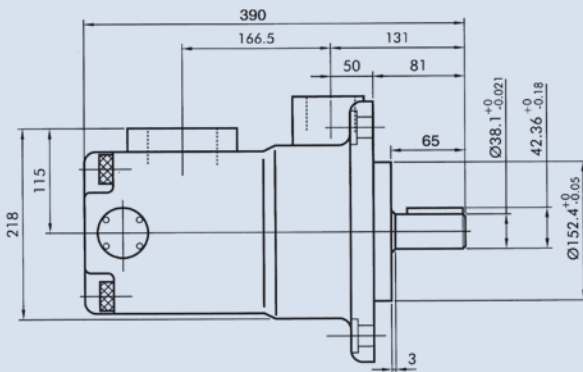
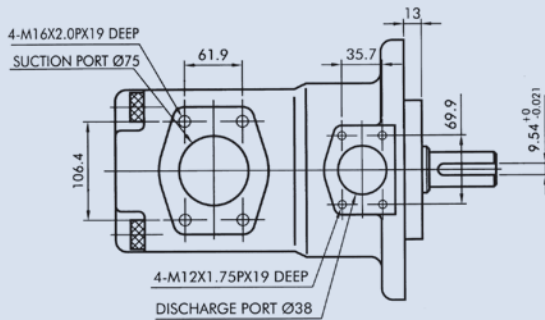
Unit:mm



FIXED DISPLACEMENT HI-PRESSURE SINGLE VANE PUMP

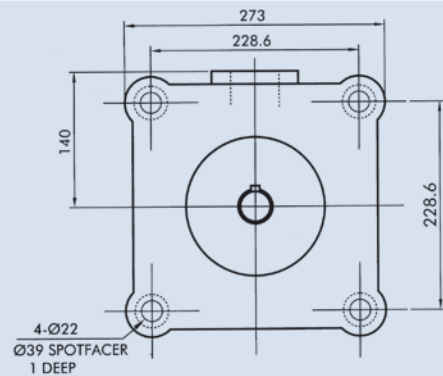
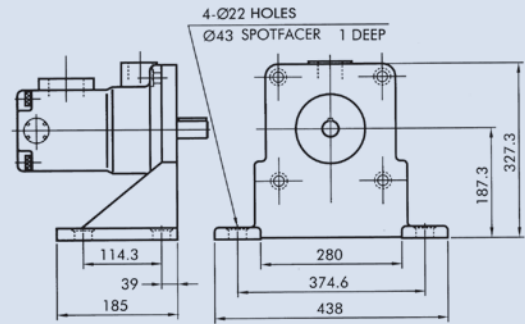
Dimensions

SVQ45



FOOT TYPE

Unit:mm



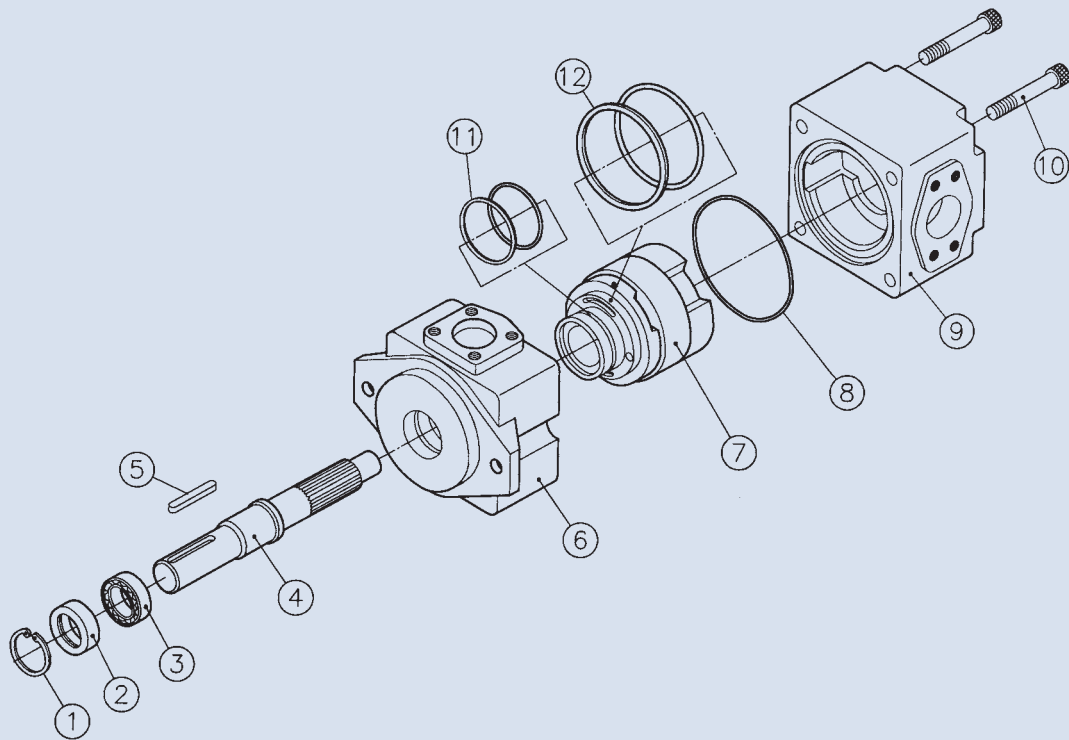
Parts list

Item No.	Description	VQ15	VQ25 (SVQ25)	VQ35 (SVQ35)	VQ45 (SVQ45)
1	Retainer Ring	R47	R52	R72	R85
2	Seal	22x47x7	30x52x11	(VQ35) 35x55x11 (SVQ35) 38x72x12	50x85x10
3	Bearing	6204	6205	6207	6209
4	Shaft				
5	Key				
6	Housing				
7	Cartridge Kit				
8	O-Ring	G85	G100	G135	G140
9	Cover				
10	Cap-Screw	M10x1.5x85	(VQ25) M12x1.75x110 (SVQ25) M12x1.75x120	M16x2.0x130	(VQ45) M16x2.0x160 (SVQ45) M20x2.5x160
11	O-ring & Endless Back-up Ring	P36	P46	65.5x3.5	G80
12	O-ring & Endless Back-up Ring	71.5x3.5	90.2x3.5	G115	G130

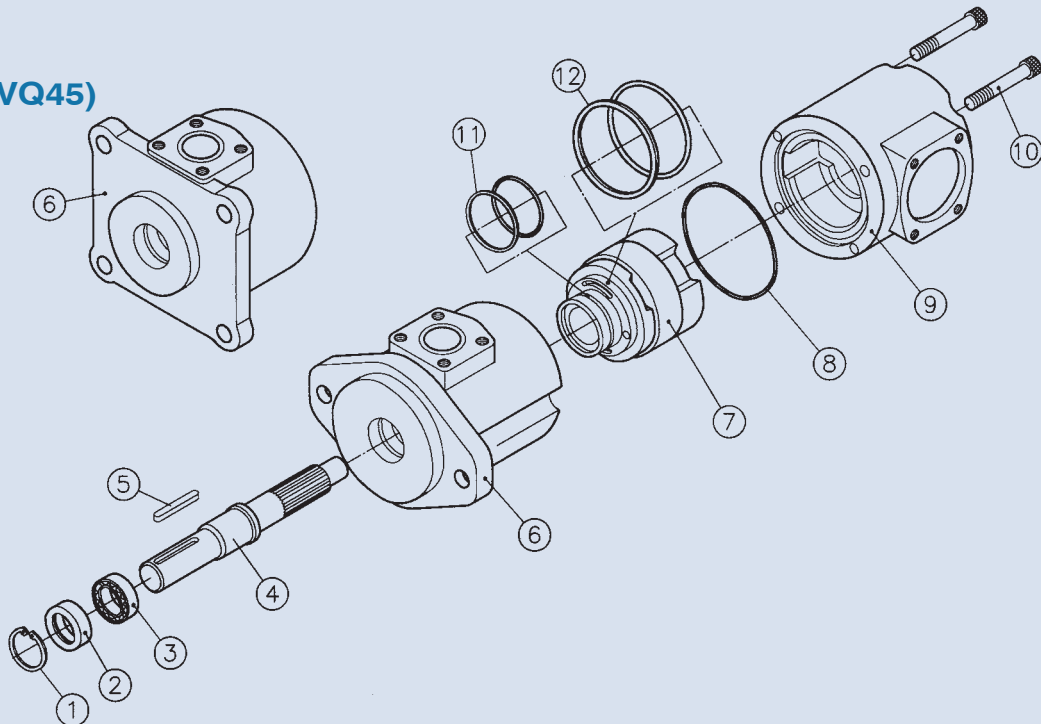
FIXED DISPLACEMENT HI-PRESSURE SINGLE VANE PUMP

Decomposition Chart

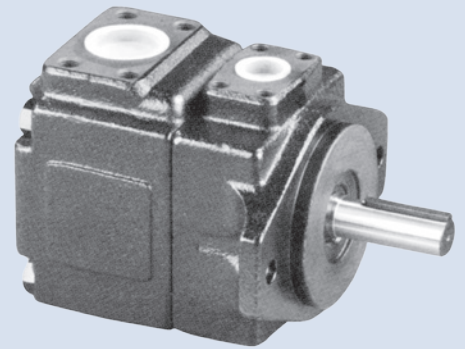
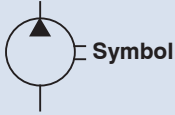
VQ15
VQ25
VQ35
VQ45



SVQ25
SVQ35
SVQ45 (DVQ45)



FIXED DISPLACEMENT HI-PRESSURE SINGLE VANE PUMP



How to order

HVQ20, DVQ20 - 4 - F - R - A - A - 01

1	Model
2	Displacement cc/rev
3	Mounting type F: Flange type L: Foot type
4	Shaft rotation (viewed from shaft end) R: Clockwise L: Counter-clockwise
5	Discharge port A: Upward (normal) B: Downward R: Right side L: Left side
6	Suction port A: Upward (normal) B: Downward R: Right side L: left side
7	Shaft type 01: Normal

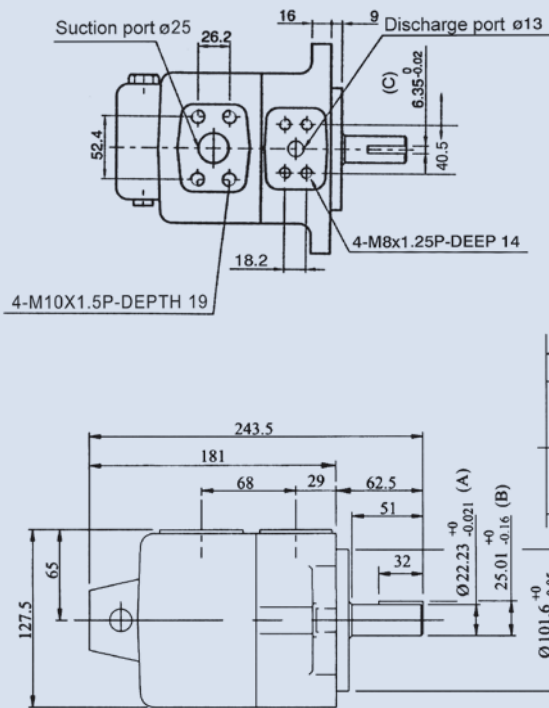
Specifications

Model	Displacement (cc/rev)	Max. Pressure (bar)		Running speed (rpm)		Weight (kg)	
		Cont.	Peak	Max.	Min.	Flange type	Foot type
HVQ20	4	420	480	3000	800	18.1	23.1
	6			2500			
	8						
	11						
	14	380	400	1800			
	17						
	19						
23	230	280	1800	18	23		
18							
22							
26							
32							
38							
43							
47							
52							
60	250	1600					
65							
75							

FIXED DISPLACEMENT HI-PRESSURE SINGLE VANE PUMP

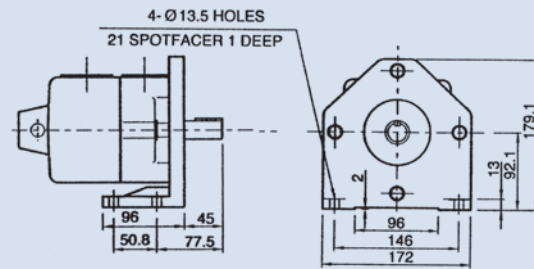
Dimensions

HVQ20



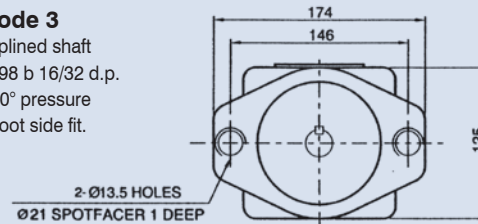
FOOT TYPE

Unit:mm

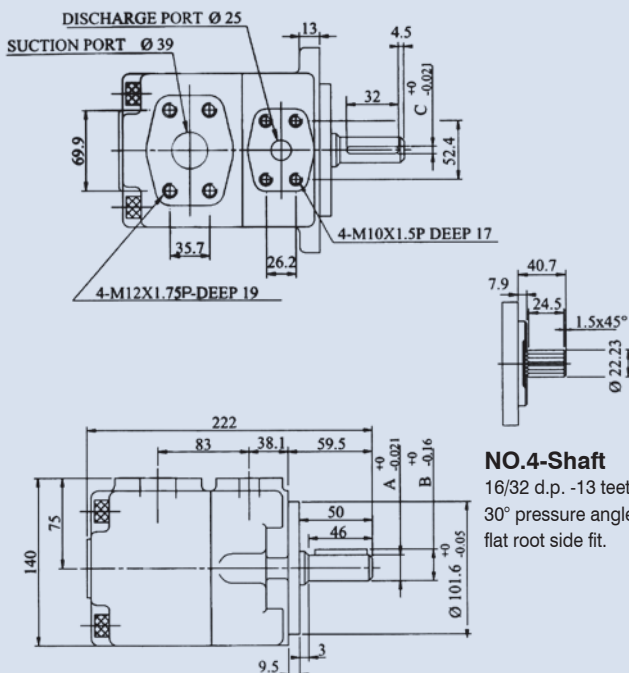


	A	B	C
NO.01-Shaft	ø22.23	25.01	6.35
NO.03-Shaft	Spline shaft		

Shaft Code 3
SAE B-B splined shaft
Class 1-J498 b 16/32 d.p.
-13 teeth 30° pressure
angle flat root side fit.

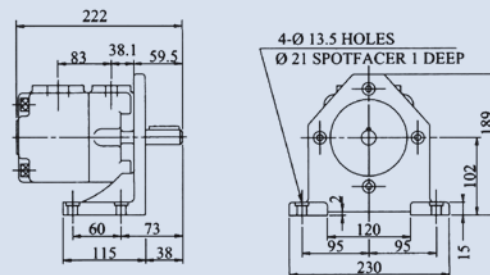


DVQ25



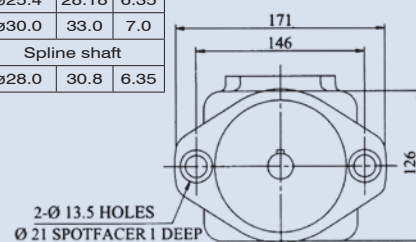
FOOT TYPE

Unit:mm

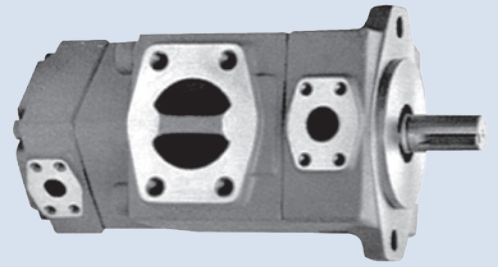
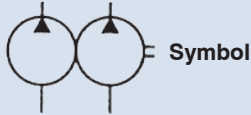


	A	B	C
NO.01-Shaft	ø22.23	24.5	6.35
NO.02-Shaft	ø25.4	28.18	6.35
NO.03-Shaft	ø30.0	33.0	7.0
NO.04-Shaft	Spline shaft		
NO.W-Shaft	ø28.0	30.8	6.35

NO.4-Shaft
16/32 d.p. -13 teeth
30° pressure angle
flat root side fit.



FIXED DISPLACEMENT HI-PRESSURE DOUBLE VANE PUMP



How to order

VQ215 - 18 - 6 - ✖ - R - A - A - A - ✖

1 2 3 4 5 6 7 8 9

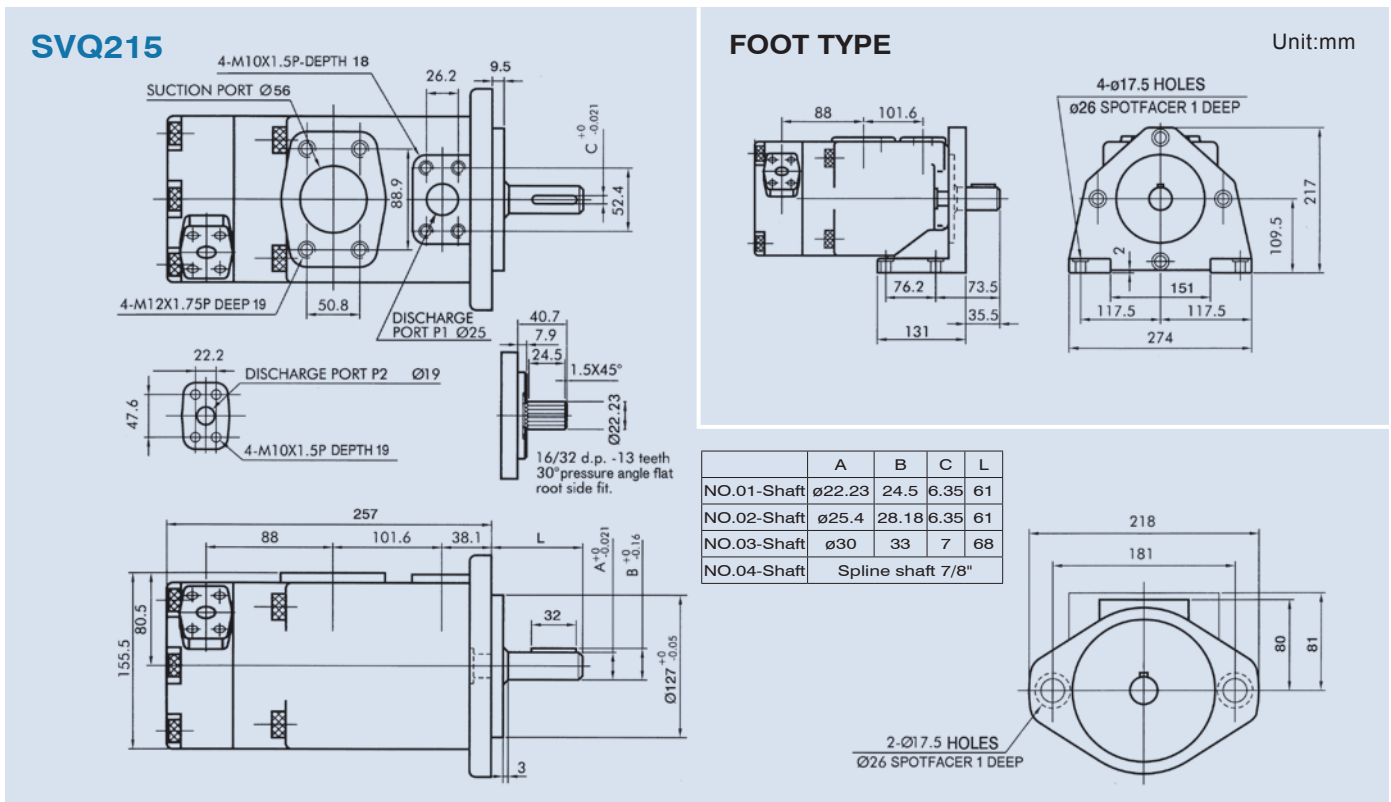
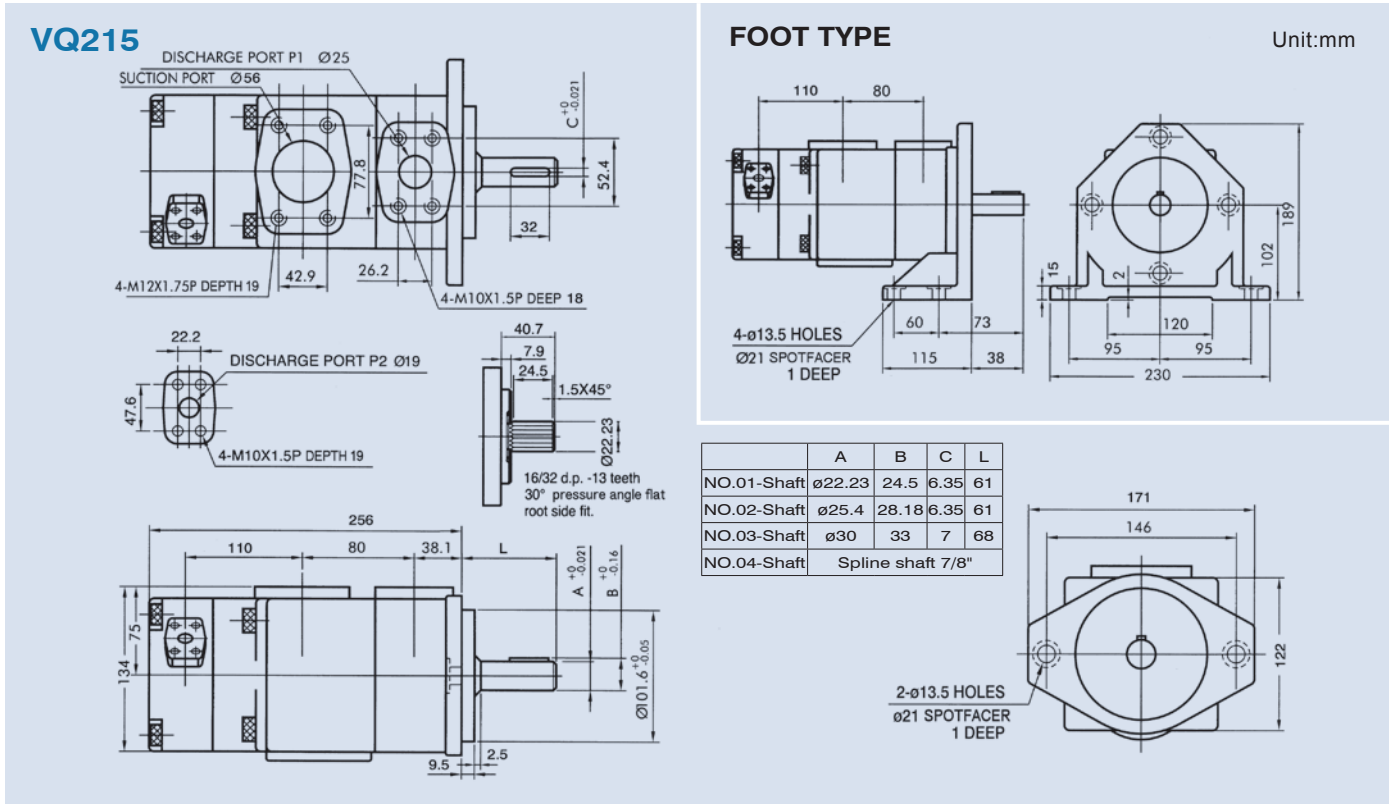
1	Model
2	P1 Displacement cc/rev
3	P2 Displacement cc/rev
4	Mounting type F: Flange type (normal) L: Foot type
5	Shaft rotation (viewed from shaft end) R: Clockwise L: Counter-clockwise
6	P1: Discharge A: Upward (normal) B: Downward R: Right side L: Left side
7	Suction port A: Upward (normal) B: Downward R: Right side L: Left side
8	P2: Discharge port A: Upward (normal) B: Downward R: Right side L: Left side R1: Right upward 45° R2: Right downward 45° L1: Left upward 45° L2: Left downward 45°
9	Shaft type

Specifications

Model	P1: Displacement (cc/rev)	P2: Displacement (cc/rev)	Max. Pressure (bar)	Weight (kg)	
				Flange Type	Foot Type
VQ215	18,22,26,32,38,43,47,52,60,65,75	6,8,11,14,17,19,23,26,31,38	245	24	29
SVQ215				32	40
VQ225	18,22,26,32,38,43,47,52,60,65,75	30.6		35.5	
VQ315		48		55	
SVQ315	60,66,76,82,88,94,108,116,125	44.4		52	
VQ325		50		58	
VQ425	136,156,189,200,216,237	18,22,26,32,38,43,47,52,60,65,75		63	71
SVQ425				80	111
DVQ425				73	104
VQ435	136,156,189,200,216,237	60,66,76,82,88,94,108,116,125		76	93
SVQ435			91	122	
DVQ435			84	115	

FIXED DISPLACEMENT HI-PRESSURE DOUBLE VANE PUMP

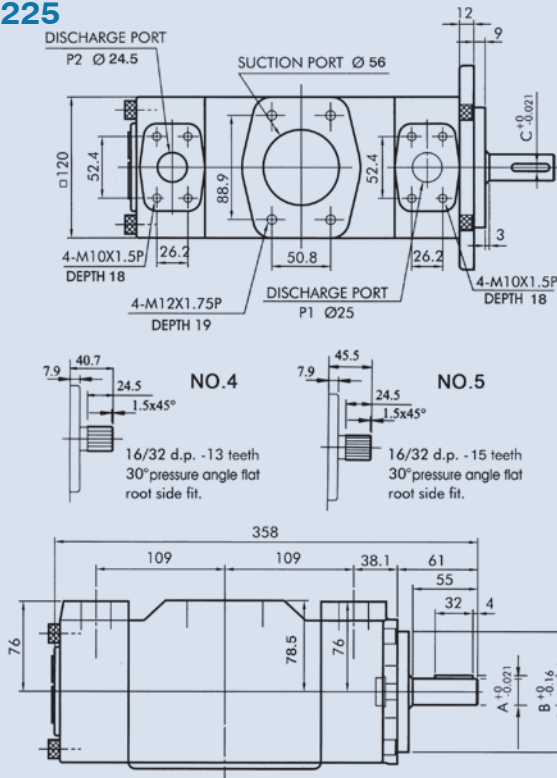
Dimensions



FIXED DISPLACEMENT HI-PRESSURE DOUBLE VANE PUMP

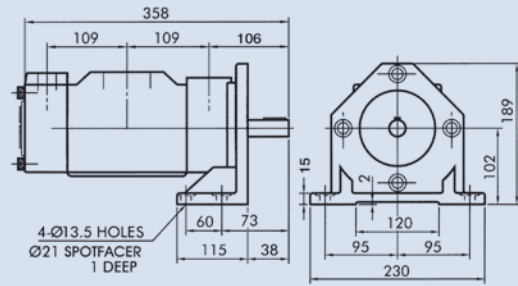
Dimensions

VQ225

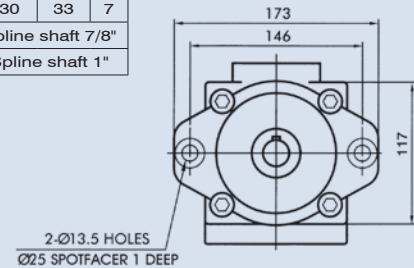


FOOT TYPE

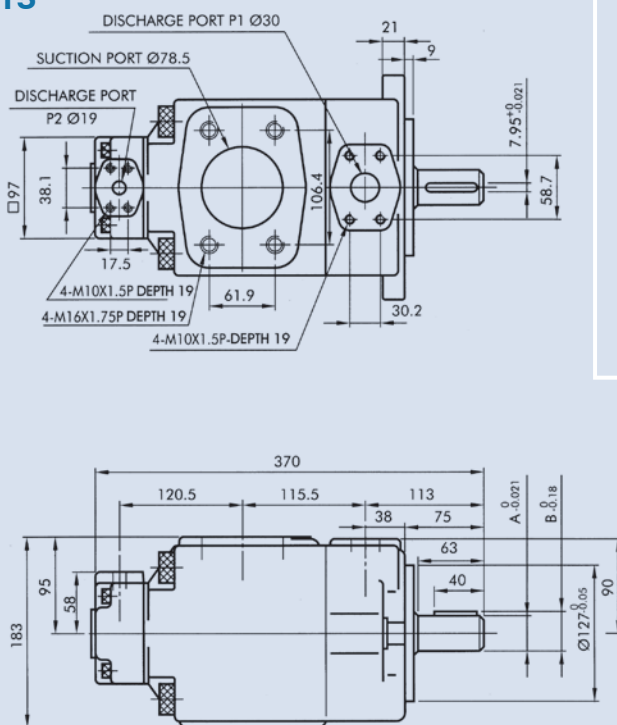
Unit:mm



	A	B	C
NO.01-Shaft	ø22.23	24.5	6.35
NO.02-Shaft	ø25.4	28.18	6.35
NO.03-Shaft	ø30	33	7
NO.04-Shaft	Spline shaft 7/8"		
NO.05-Shaft	Spline shaft 1"		

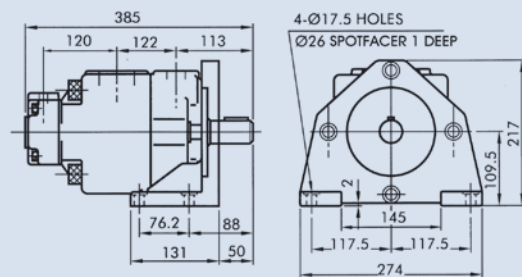


VQ315

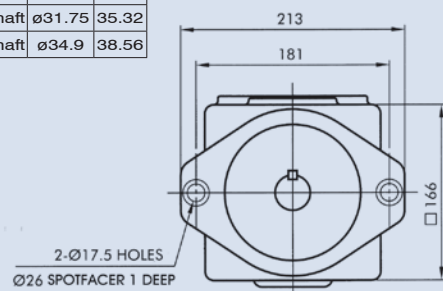


FOOT TYPE

Unit:mm



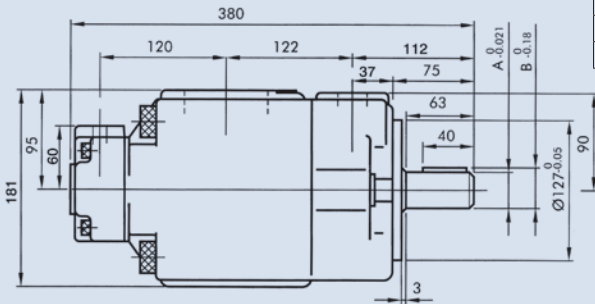
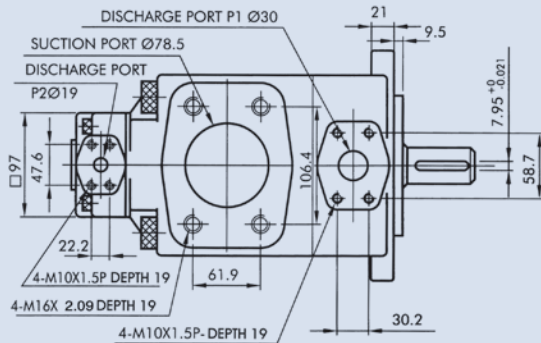
	A	B
NO.01-Shaft	ø31.75	35.32
NO.02-Shaft	ø34.9	38.56



FIXED DISPLACEMENT HI-PRESSURE DOUBLE VANE PUMP

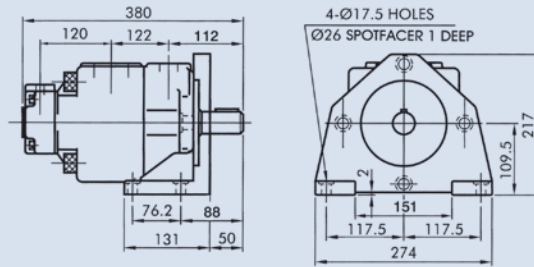
Dimensions

SVQ315

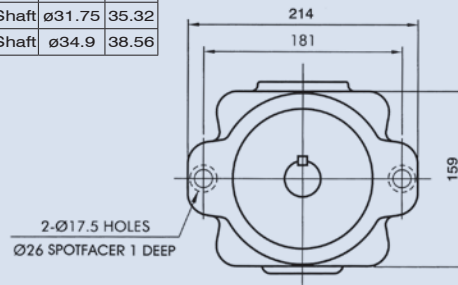


FOOT TYPE

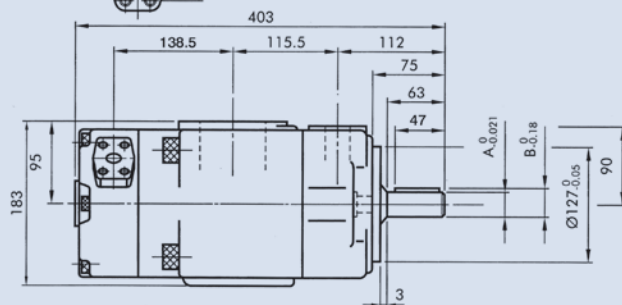
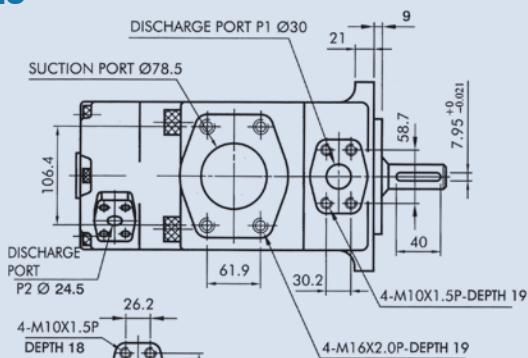
Unit:mm



	A	B
NO.01-Shaft	ø31.75	35.32
NO.02-Shaft	ø34.9	38.56

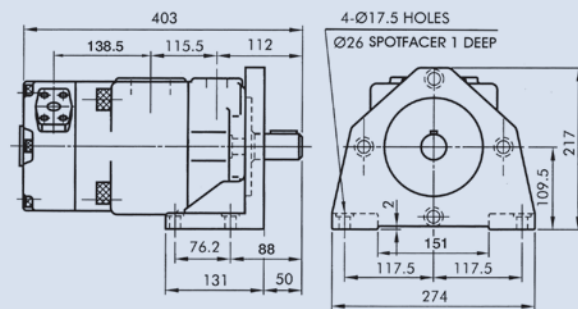


VQ325

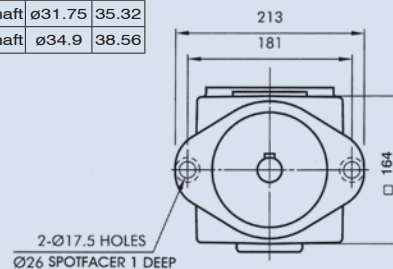


FOOT TYPE

Unit:mm



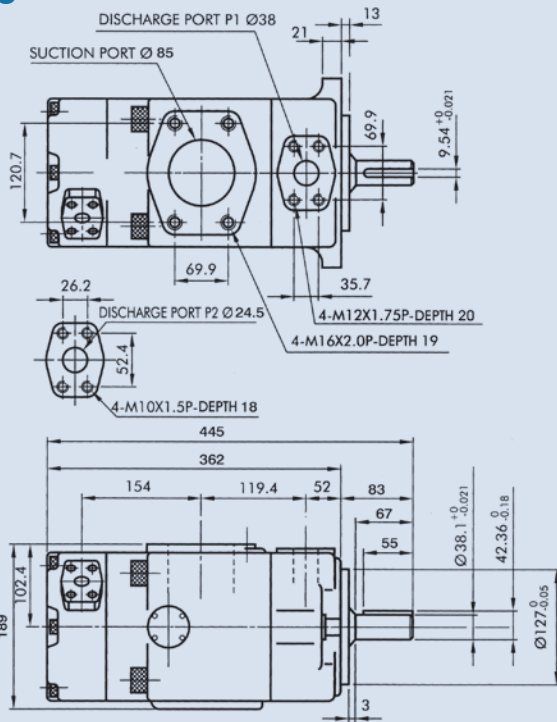
	A	B
NO.01-Shaft	ø31.75	35.32
NO.02-Shaft	ø34.9	38.56



FIXED DISPLACEMENT HI-PRESSURE DOUBLE VANE PUMP

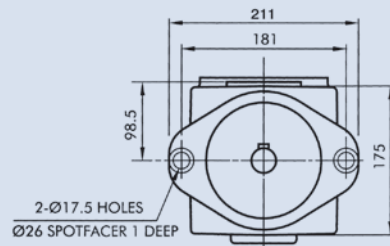
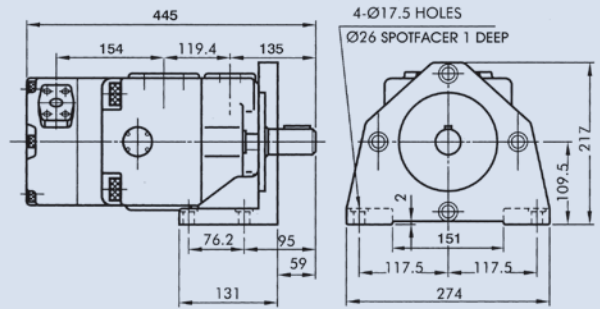
Dimensions

VQ425

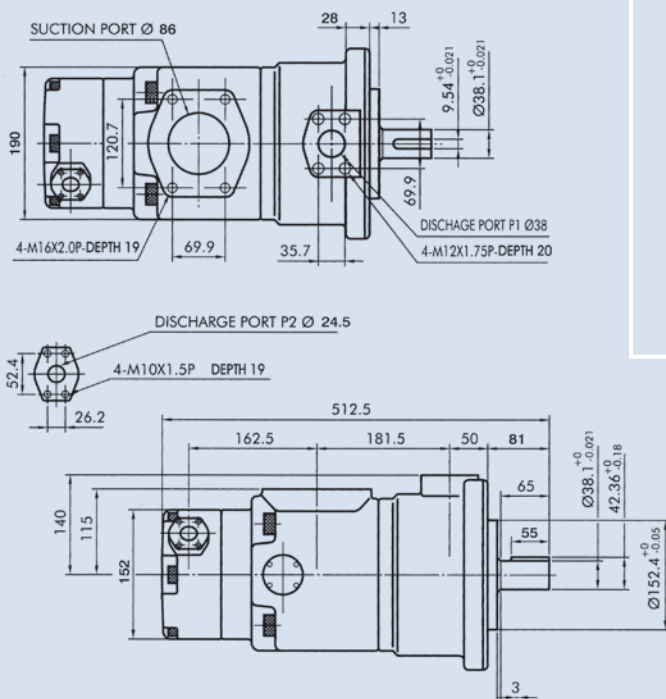


FOOT TYPE

Unit:mm

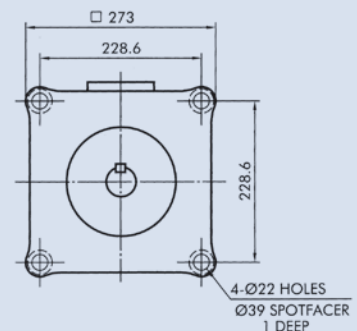
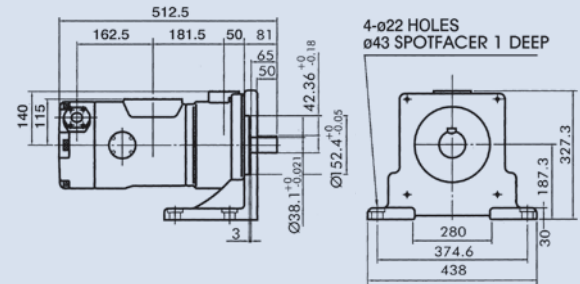


SVQ425



FOOT TYPE

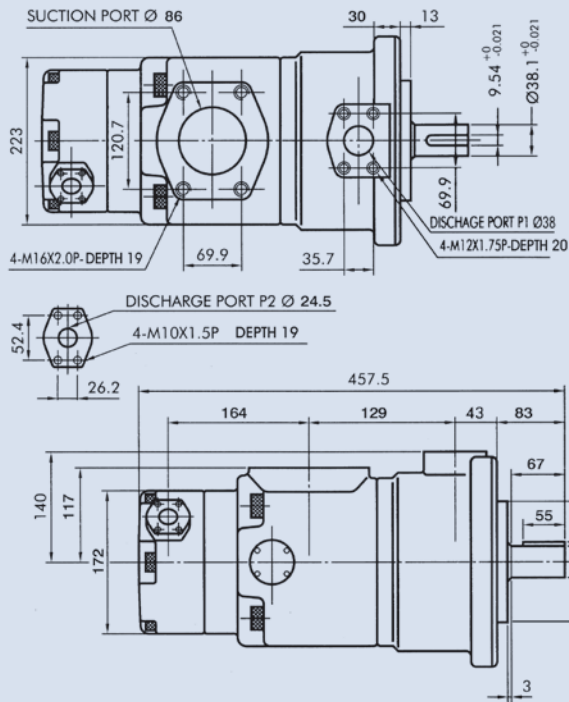
Unit:mm



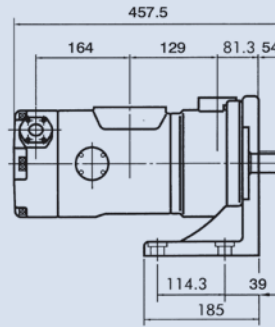
FIXED DISPLACEMENT HI-PRESSURE DOUBLE VANE PUMP

Dimensions

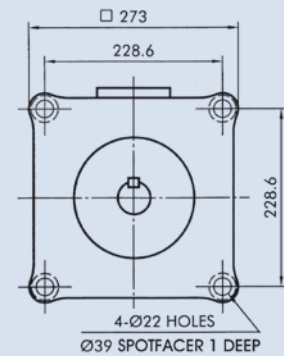
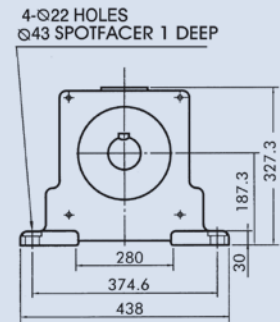
DVQ425



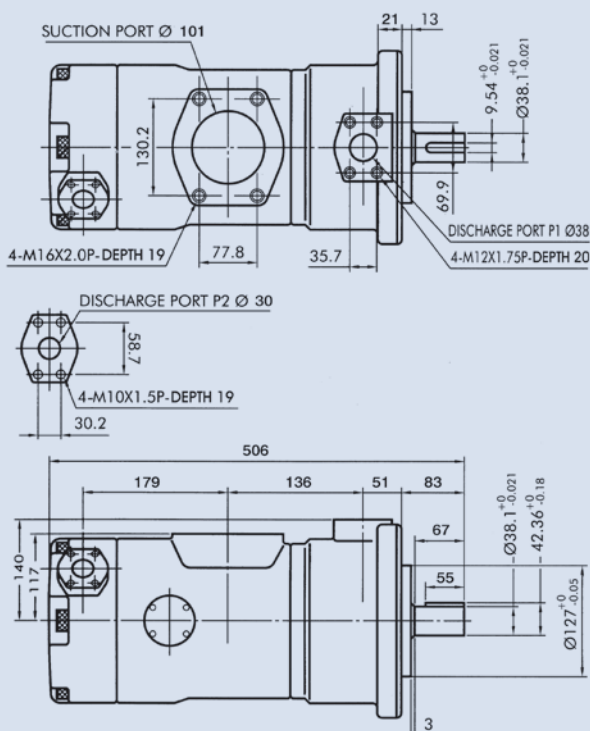
FOOT TYPE



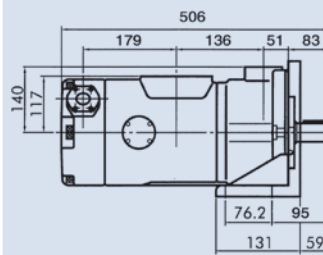
Unit:mm



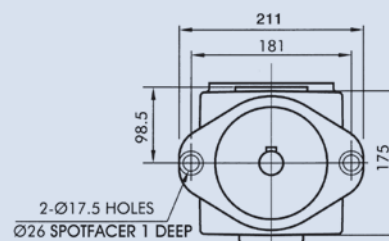
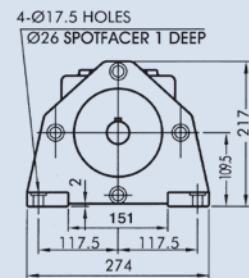
VQ435



FOOT TYPE



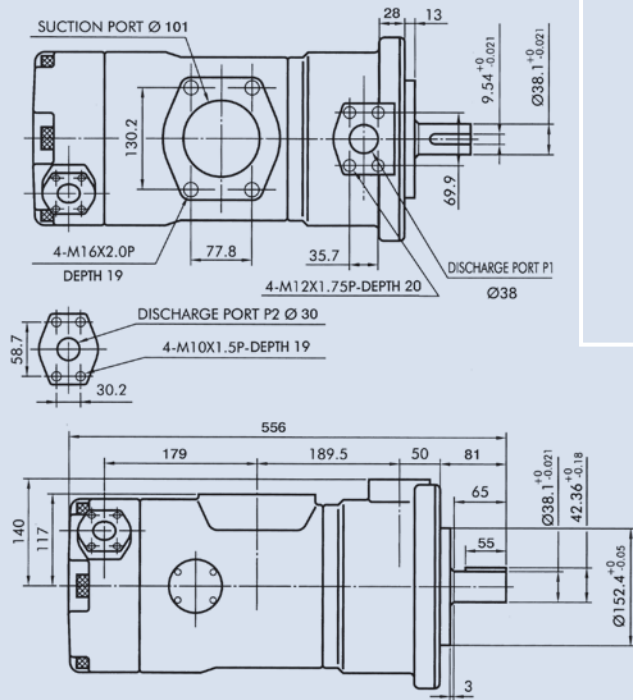
Unit:mm



FIXED DISPLACEMENT HI-PRESSURE DOUBLE VANE PUMP

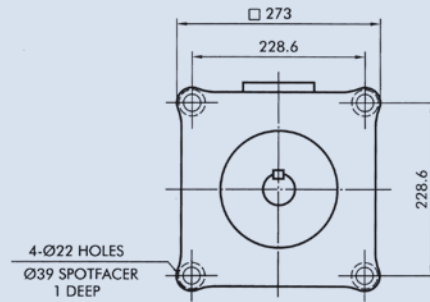
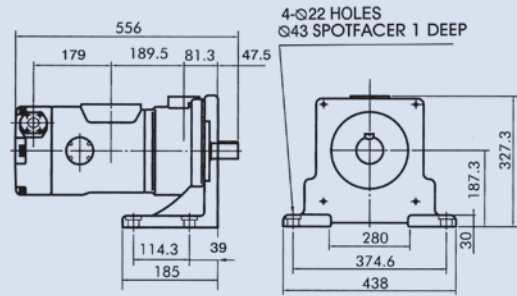
Dimensions

SVQ435

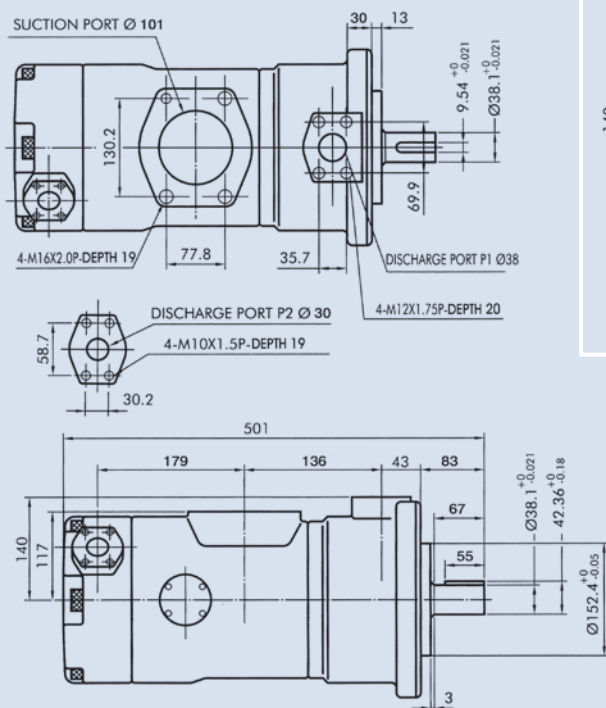


FOOT TYPE

Unit:mm

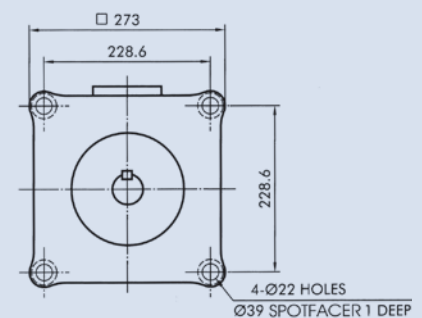
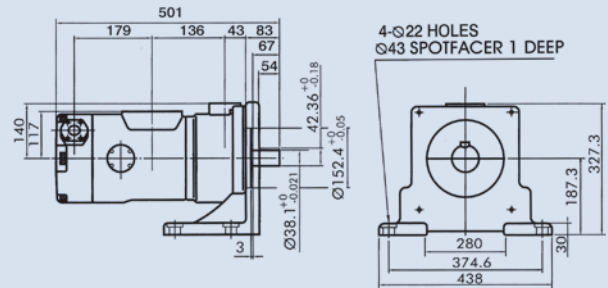


DVQ435

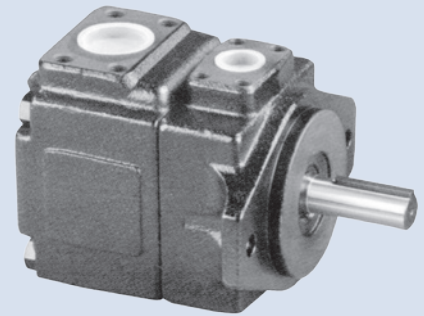
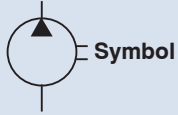


FOOT TYPE

Unit:mm



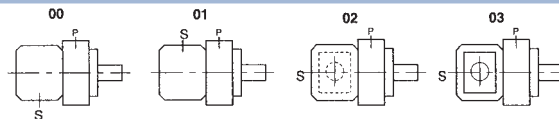
DOUBLE LIPS AND PISTON TYPE SINGLE VANE PUMP



How to order

KT6C, KT6D, KT6E - 014 - 1 R 00 - B 1

	1	2	3	4	5	6	7
1	Model						
2	Cam ring						
3	Shaft type						
4	Shaft rotation (viewed from shaft end)	R: Clockwise	L: Counter-clockwise				
5	Porting combination	00=normal					
6	Design letter						
7	Seal class	1=S1 (for mineral oil)	4=S4 (for fire resistant fluids)	5=S5 (for mineral oil and fire resistant fluids)			
	WEIGHT	KT6C: 15.7kg	KT6D: 24kg	KT6E: 43.3kg			



P=Pressure port
S=Suction port

Specifications

Model	Series	Displacement (cc/rev)	Delivery (lpm) At 1500rpm			Input Power (kw) At 1500rpm			Running Speed (rpm)		MAX. Pressure (bar)
			p=0 bar	p=140 bar	p=240 bar	p=7 bar	p=140 bar	p=240 bar	Max.	Min.	
KT6C	003	10.8	16.2	11.2	7.7	1.3	5.3	8.4	2800	600	300
	005	17.2	27.0	21.0	18.0	1.4	7.5	12.2			
	006	21.3	31.9	26.9	23.4	1.5	8.9	14.7			
	008	26.4	39.6	34.6	31.1	1.6	10.7	17.7			
	010	34.1	51.1	46.1	42.6	1.7	13.4	22.3			
	012	37.1	55.6	50.6	47.1	1.7	14.4	24.1			
	014	46.0	69.0	64.0	60.5	1.9	17.6	29.5			
	017	58.3	87.4	82.4	78.9	2.1	21.9	36.9			
	020	63.8	95.7	90.7	87.2	2.2	23.82	40.2			
	022	70.3	105.4	100.4	96.9	2.3	26.1	44.1			
	025	79.3	118.9	113.9	110.4	2.5	29.2	49.5			
	028	88.8	133.2	128.2	125.8	2.8	32.7	48.5	2500		230
031	100.0	150.0	145.0	142.6	2.8	36.5	54.4				

Port connection can be furnished with metric threads, normally UNC.

DOUBLE LIPS AND PISTON TYPE SINGLE VANE PUMP

Specifications

Model	Series	Displacement (cc/rev)	Delivery (lpm) At 1500 rpm			Input Power (kw) At 1500 rpm			Runing Speed (rpm)		Max. Pressure (bar)
			p=0 bar	p=140 bar	p=240 bar	p=7 bar	p=140 bar	p=240bar	Max.	Min.	
KT6D	014	47.6	71.4	62.1	55.9	2.3	18.5	30.6	2500	600	280
	017	58.2	87.3	78.0	71.8	2.5	22.2	37.0			
	020	66.0	99.0	89.7	83.5	2.8	24.9	41.7			
	024	79.5	119.3	110.0	103.8	3.0	29.6	49.8			
	028	89.7	134.5	125.2	119.0	3.2	33.2	55.9			
	031	98.3	147.4	138.1	131.9	3.3	36.2	61.0			
	035	111.0	166.5	157.2	151.0	3.5	40.7	68.7			
	038	120.3	180.4	171.1	164.9	3.7	43.9	74.3			
	042	136.0	204.0	194.7	188.5	4.0	49.4	83.7	2200		230
	045	145.7	218.2	209.2	203.0	4.1	52.8	89.5			
	050	158.0	237.0	227.7	224.0	4.4	57.0	85.0			
	061	190.5	285.7	278	-	4.6	60.6	-			140

Port connection can be furnished with metric threads, normally UNC.

Model	Series	Displacement (cc/rev)	Delivery (lpm) At 1500rpm			Input Power (kw)			Runing Speed (rpm)		Max. Pressure (bar)
			p=0 bar	p=140 bar	p=240 bar	p=7 bar	p=140 bar	p=240 bar	Max.	Min.	
KT6E	042	132.3	198.5	188.5	181.3	5.2	49.4	82.6	2300	600	280
	045	142.4	213.6	203.6	196.5	5.4	52.9	88.7			
	050	158.5	237.7	227.7	220.6	5.7	58.5	98.3			
	052	164.8	247.2	237.2	230.1	5.8	60.8	102.1			
	057	180.7	271.1	261.1	254	6.1	66.4	106.9			
	062	196.7	295.0	285.0	277.9	6.4	71.9	121.3			
	066	213.3	319.9	309.9	302.8	6.7	77.7	131.2			
	072	227.1	340.6	330.6	323.5	6.9	82.6	139.5			
	085	269.8	404.7	397.7	-	7.3	97.4	-	2000		120

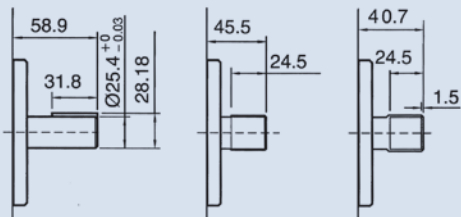
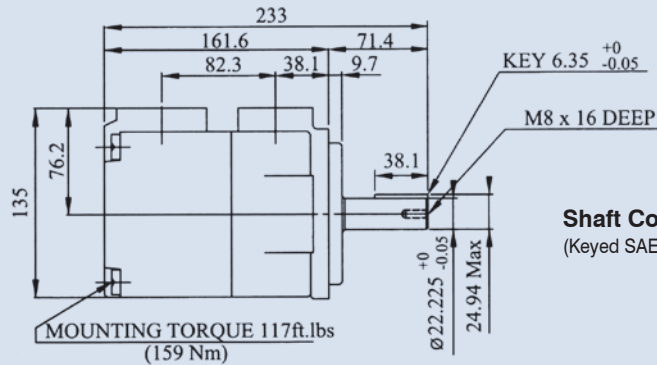
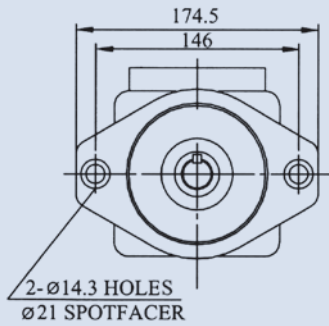
Port connection can be furnished with metric threads, normally UNC.

DOUBLE LIPS AND PISTON TYPE SINGLE VANE PUMP

Dimensions

KT6C

Unit:mm



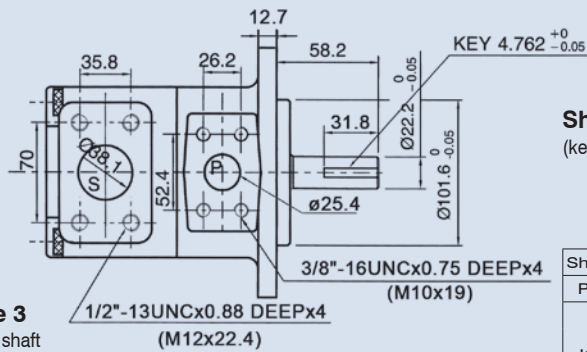
Shaft Code 5

Shaft Code 4

SAE BB splined shaft
Class 1-J498 16/32 d.p.
-15 teeth 30° pressure
angle flat root side fit.

Shaft Code 3

SAE B splined shaft
Class 1-J498 b 16/32 d.p.
-13 teeth 30° pressure
angle flat root side fit.



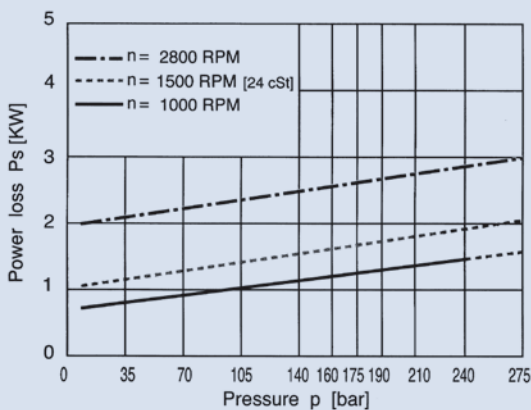
Shaft Code 2

(keyed no SAE)

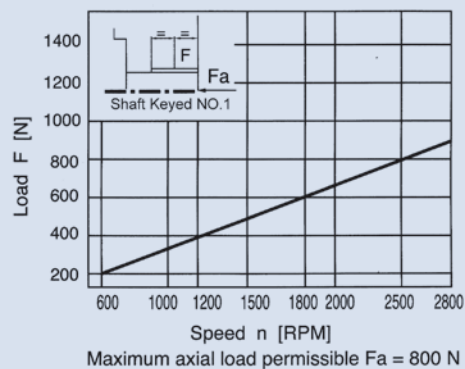
Shaft torque limits (cc/rev*bar)		
Pump	Shaft	Vp x P max.
KT6C	1	16500
	2	14300
	3	20600
	4	20600

Performance curves

KT6C Power loss hydromechanics (typical)



KT6C Permissible radial load

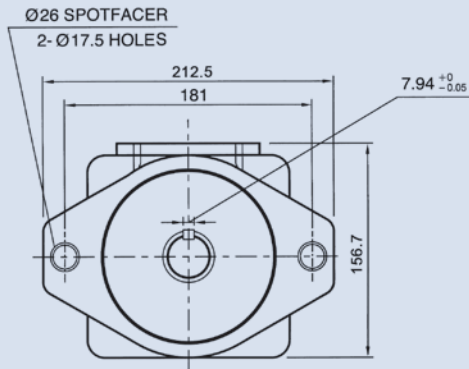


DOUBLE LIPS AND PISTON TYPE SINGLE VANE PUMP

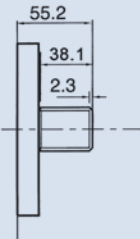
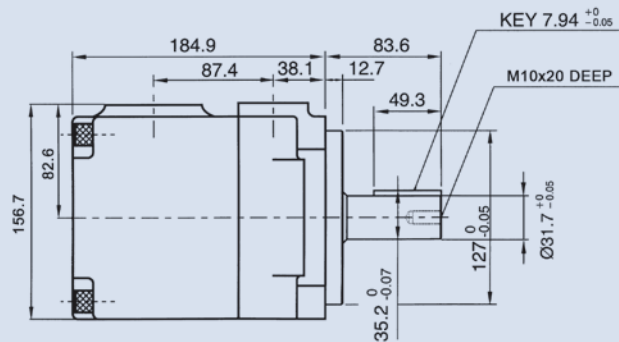
Dimensions

KT6D

Unit:mm

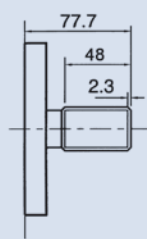


Shaft Code 1 (Keyed SAE C)



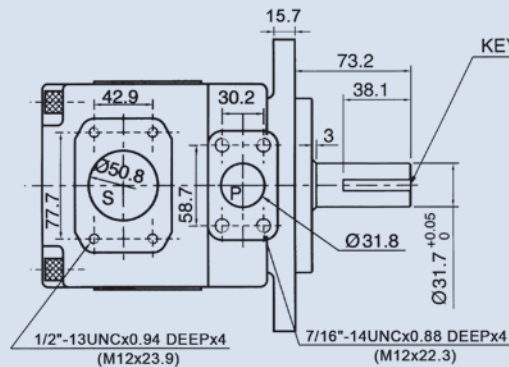
Shaft Code 3

SAE splined shaft Class 1-J498 b 12/24 d.p. -14 teeth 30° pressure angle flat root side fit.



Shaft Code 4

NO SAE splined shaft Class 1-J498 b 12/24 d.p. -14 teeth 30° pressure angle flat root side fit.

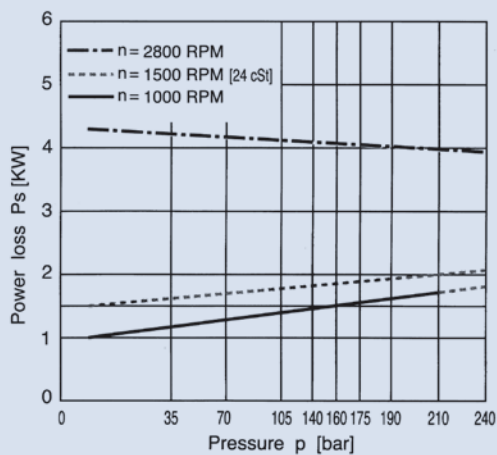


Shaft Code 2 (Keyed no SAE)

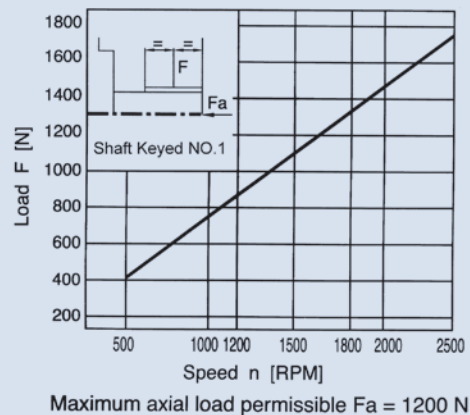
Shaft torque limits (cc/rev*bar)		
Pump	Shaft	Vp x P max.
KT6D	1	43283
	2	34590
	3	61200
	4	61200

Performance curves

KT6D Power loss hydromechanics (typical)



KT6D Permissible radial load



DOUBLE LIPS AND PISTON TYPE SINGLE VANE PUMP

Dimensions

KT6E Unit:mm

Shaft Code 1
(Keyed SAE C-C)

Shaft Code 2
(Keyed no SAE)

Shaft Code 3
SAE C Splined shaft class 1 - J498 b 12/24 d.p. -14 teeth 30° pressure angle flat root side fit.

Shaft Code 4
SAE C-C Splined shaft class 1 - J498 b 12/24 d.p. -17 teeth 30° pressure angle flat root side fit.

Pump	Shaft	Vp x P max.
KT6E	1	54555
	2	54590
	3	61200
	4	61200

Performance curves

KT6E Power loss hydromechanics (typical)

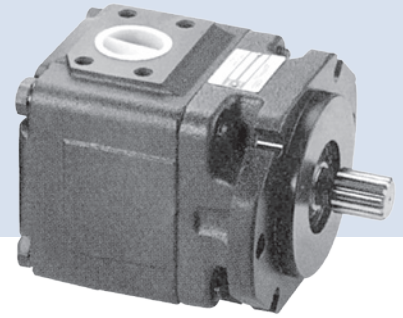
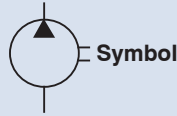
Pressure p [bar]	n = 1000 RPM	n = 1500 RPM	n = 2800 RPM
0	1.8	2.8	3.8
35	1.9	2.9	3.9
70	2.0	3.0	4.0
105	2.1	3.1	4.1
140	2.2	3.2	4.2
175	2.3	3.3	4.3
210	2.4	3.4	4.4
240	2.5	3.5	4.5

KT6E Permissible radial load

Speed n [RPM]	Load F [N]
500	800
1000	1200
1500	1600
2000	2000
2200	2400

Maximum axial load permissible Fa = 2000 N

DOUBLE LIPS AND PISTON TYPE SINGLE VANE PUMP



How to order

KT6DS - 014 - 1 R 00 - B 1

1 2 3 4 5 6 7

- 1 Model
- 2 Cam ring
- 3 Shaft type
- 4 Shaft rotation (viewed from shaft end) R: Clockwise L: Counter-clockwise
- 5 Porting combination 00: Normal

S=Suction port
P=Pressure port
- 6 Design Letter
- 7 Seal class 1: S1 (for mineral oil) 4: S4 (for fire resistant fluids) 5: S5 (for mineral oil and fire resistant fluids)

Specifications

Model	Series	Displacement (cc/rev)	Delivery (lpm) At 1500 rpm			Input Power (kw) At 1500 rpm			Max. Pressure (bar)	Runing Speed (rpm)		Weight (kg)
			p=0 bar	p=140 bar	p=240 bar	p=7 bar	p=140 bar	p=240 bar		Max.	Min.	
KT6DS	014	47.6	71.4	62.1	55.9	2.3	18.5	30.6	280	2800	600	29
	017	58.2	87.3	78.0	71.8	2.5	22.2	37				
	020	66.0	99.0	89.7	83.5	2.8	24.9	41.7				
	024	79.5	119.3	110.0	103.8	3.0	29.6	49.8				
	028	89.7	134.5	125.2	119.0	3.2	33.2	55.9				
	031	98.3	147.5	138.1	131.9	3.3	36.2	61.0				
	035	111.0	166.5	157.2	151.0	3.5	40.7	68.7				
	038	120.3	180.4	171.1	164.9	3.7	43.9	74.3				
	042	136.0	204.0	194.7	188.5	4.0	49.4	83.7				
	045	145.7	218.2	209.2	203.0	4.1	52.8	89.5				
	050	158.0	237.0	227.7	224.0	4.4	57	85.0				
061	190.5	285.7	278	-	4.6	60.6	-	230	2500			
								140				

Port connection can be furnished with metric threads, normally UNC.

Dimensions

KT6DS

Unit:mm

Shaft Code 3
SAE C Splined shaft class 1 - J498 b 12/24 d.p. -14 teeth 30° pressure angle flat root side fit.

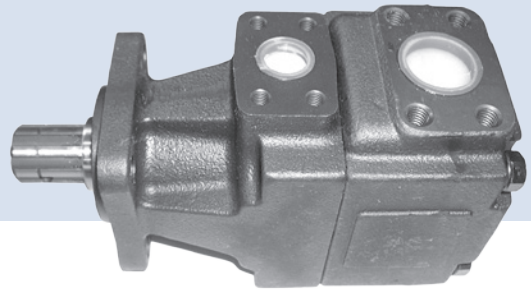
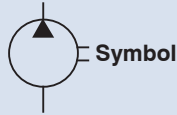
Shaft Code 4
NO SAE Splined shaft class 1 - J498 b 12/24 d.p. -14 teeth 30° pressure angle flat root side fit.

Shaft Code 1
(Keyed SAE C)

Shaft Code 2
(Keyed no SAE)

Shaft torque limits (cc/rev x bar)		
Pump	Shaft	Vp x P max.
KT6DS	1	43283
	2	34590
	3	61200
	4	61200

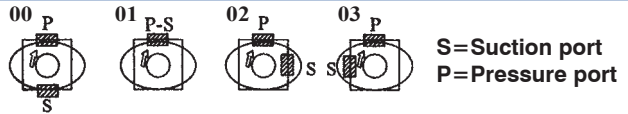
DOUBLE LIPS AND PISTON TYPE SINGLE VANE PUMP



How to order

KT6GC - 022 - 6 R 00 - A 1 - 00 ✱

1	Model
2	Cam ring
3	Shaft type 6: splined (DIN 5462)
4	Shaft rotation (viewed from shaft end) R: Clockwise L: Counter-clockwise
5	Porting combination 00: Normal
6	Design Letter
7	Seal class 1: S1 (for mineral oil)
8	Port size 00: Flange 1" BSPP 01: Flange 1" SAE 4 bolts (UNC) M1: Flange 1" SAE 4 bolts (METRIC)
9	Modifications



Specifications

Model	Series	Displacement (cc/rev)	Delivery (lpm) At 1500 rpm			Input Power (kw) At 1500 rpm			Max. Pressure (bar)	Running Speed (rpm)		Weight (kg)
			p=0 bar	p=140 bar	p=240 bar	p=7 bar	p=140 bar	p=240 bar		Max.	Min.	
KT6GC	003	10.8	16.2	10.7		1.3	5.3	300	3000	600	17	
	005	17.2	25.8	20.3	15.8	1.4	7.5					
	006	21.3	31.9	26.5	22.0	1.5	8.9					
	008	26.4	39.6	34.1	29.6	1.6	10.7					
	010	34.1	51.1	45.7	41.2	1.7	13.4					
	012	37.1	55.6	50.2	45.7	1.7	14.4					
	014	46.0	69.0	63.5	59.0	1.9	17.6					
	017	58.3	87.4	82.0	77.5	2.1	21.9					
	020	63.8	95.7	90.2	85.7	2.2	23.8					
	022	70.3	105.4	100.0	95.5	2.3	26.1					
	025	79.3	118.9	113.5	109.0	2.5	29.2					
	028	88.8	133.2	127.7	124.5	2.8	32.7					
	031	100.0	150.0	144.5	141.3	2.8	36.5	250	2800	400		

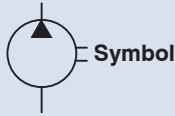
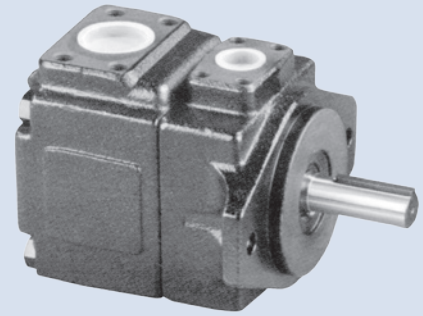
Not to use because internal leakage greater than 50% theoretical flow.

Dimensions

KT6GC
Unit:mm

Shaft Code 6
(DIN 5462) B8x32x36

DOUBLE LIPS AND PISTON TYPE SINGLE VANE PUMP



How to order

KT7B, KT7BS - 010 - 1 R 00 - A 1 - 00

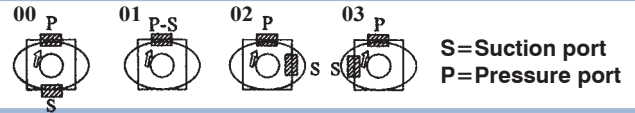
1 Model KT7B series-100 A2 HW ISO 2 bolts 3019-2 mounting flange KT7BS series- SAE B 2 bolts Mounting flange J744

2 Cam ring

3 Shaft type KT7B-KT7BS 2-Keyed (ISO R775), KT7BS 1-Keyed (SAE B), 3-Splined (SAE B), 4-Splined (SAE BB)

4 Shaft rotation (viewed from shaft end) R: Clockwise L: Counter-clockwise

5 Porting combination 00: Normal



6 Design Letter

7 Seal class 1: S1 (for mineral oil) 4: S4 (for fire resistant fluids) 5: S5 (for mineral oil and fire resistant fluids)

8 Port size 4 bolts SAE flange (J518C)

PORT	UNC KT7BS		Metric KT7B-KT7BS	
	00	01	M0	M1
P	1"	3/4"	1"	3/4"
S	1 1/2"			

Specifications

Model	Series	Displacement (cc/rev)	Delivery (lpm) At 1800 rpm			Input Power (kw) At 1800 rpm			Max. Pressure (bar)	Max. Speed (rpm)	Weight (kg)
			p=0 bar	p=140 bar	p=320 bar	p=7 bar	p=140 bar	p=240 bar			
KT7B KT7BS	002	5.7	10.4	8.8	6.5	0.55	2.99	6.40	320	3600	15.7
	003	9.8	17.6	15.9	13.7	0.63	4.65	10.25			
	004	12.8	23.0	21.4	19.2	0.70	5.89	13.13			
	005	15.9	28.6	26.9	24.7	0.76	7.17	16.12			
	006	19.8	35.6	33.9	31.7	0.84	8.79	19.88			
	007	22.5	40.4	38.8	36.5	0.89	9.91	22.47			
	008	24.9	44.7	43.1	40.9	0.94	10.9	24.78			
	009	28.0	50.3	48.6	46.4	1.01	12.19	27.77			
	010	31.8	57.2	55.5	53.4	1.11	13.75	31.42			
	011	34.9	62.9	61.2	59.0 1)	1.15	15.04	32.22 1)			
	012	40.9	73.7	72.1	70.1 1)	1.28	17.56	37.71 1)			
	014	45.1	80.8	79.2	77.0 1)	1.36	19.23	41.37 1)			
	015	50.0	89.8	88.3	86.5 2)	1.47	21.28	42.76 2)			

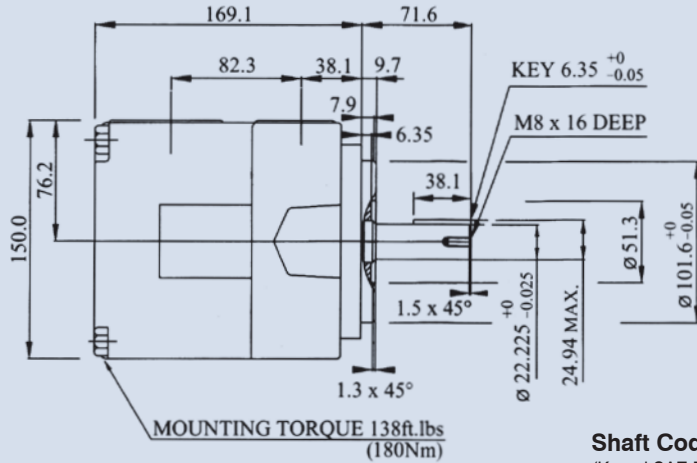
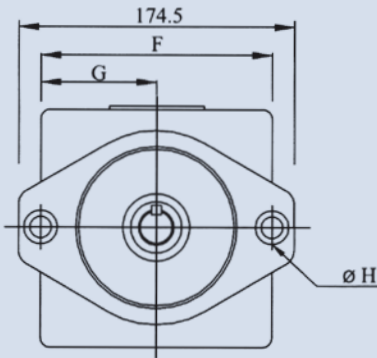
1)011, 012, 014: 300 bar Max. int 2)015: 280 bar Max. int

DOUBLE LIPS AND PISTON TYPE SINGLE VANE PUMP

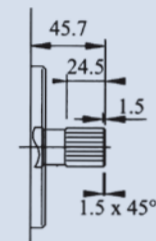
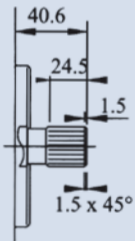
Dimensions

Unit:mm

KT7BS



KT7B

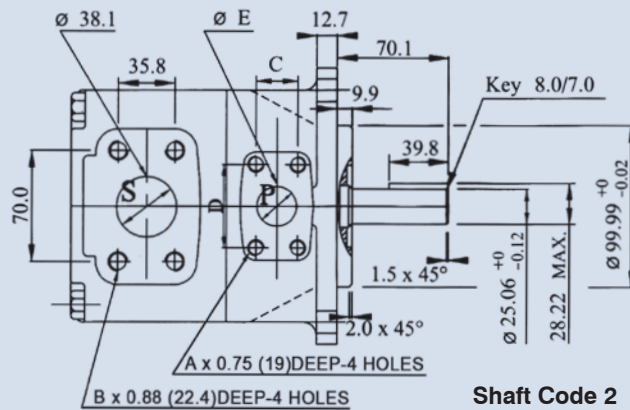


Shaft Code 3

SAE B Splined shaft calss
1 - J498 b 16/32 d.p. -13
teeth 30° pressure angle
flat root side fit.

Shaft Code 4

SAE BB Splined shaft
class 1 - J498 b 16/32
d.p. -15 teeth 30°
pressure angle flat
root side fit.



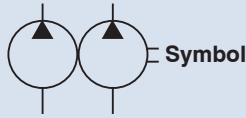
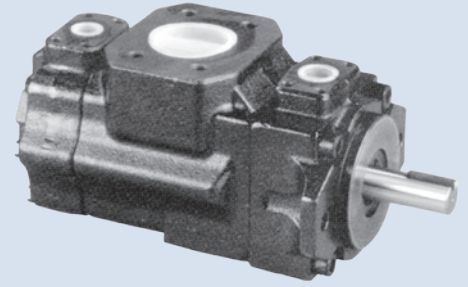
Shaft Code 2

(Keyed ISO R775)

	KT7BS		KT7B	
	00	01	M0	M1
A	3/8-16 UNC		M10	
B	1/2-13 UNC		M12	
C	1.03 (26.2)	0.874 (22.2)	1.03 (26.2)	0.874 (22.2)
D	2.06 (52.4)	1.874 (47.6)	2.06 (52.4)	1.874 (47.6)
øE	1.00 (25.4)	0.75 (19.05)	1.00 (25.4)	0.75 (19.05)
F	5.75 (146.0)		5.51 (140.0)	
G	2.87 (73.0)		2.75 (70.0)	
øH	0.56 (14.3)		0.55 (14.0)	

Shaft torque limits (cc/rev x bar)		
Pump	Shaft	Vp x P max.
KT7B	1	16516
	2	20620
	3	20620
	4	20620

DOUBLE LIPS AND PISTON TYPE DOUBLE VANE PUMP



How to order

KT6CC - W - 002 - 008 - 1 R 00 C - 1 00
 1 2 P1 P2 4 5 6 7 8 9

1	Model	KT6CC (KT6C+6C)	KT6DC (KT6D+6C)	KT6EC (KT6E+6C)	KT6ED (KT6E+6D)
2	W: Use for severe duty shaft only	KT6CC-W: Code 2, S	KT6DC-W: Code 5		
3	Cam ring for P1 & P2				
4	Shaft type				
5	Shaft rotation (viewed from shaft end)	R: Clockwise	L: Counter-clockwise		
6	Porting combination	00: Normal			
7	Design letter				
8	Seal class	1: S1 (for mineral oil)	4: S4 (for fire resistant fluids)	5: S5 (for mineral oil and fire resistant fluids)	
	Weight	KT6CC: 26kg	KT6DC: 36.6kg	KT6EC: 55kg	KT6ED: 66kg
9	Mounting W/connection variables				

KT6CC	P1=1", S=3"		P1=1", S=2 1/2" ²⁾	
	P2	1" 3/4" ¹⁾	1" 3/4" ¹⁾	
Code	Unc	00	01	10
	Metric	0M	W0	1M

1) for 46 cc/rev. max.
 2) for 126 cc/rev. max.

KT6DC	UNC		Metric	
	00	01	M0	M1
P2	1"	3/4"	1"	3/4"

Specifications

Model	Pressure Port	Series	Displacement (cc/rev)	Delivery (lpm) At 1500 rpm			Input Power (kw)		
				P=0 bar	P=140 bar	P=240 bar	P=7 bar	P=140 bar	P=240 bar
KT6CC	P1 & P2	003	10.8	16.2	10.7		1.3	5.3	
		005	17.2	25.8	20.8	17.3	1.4	7.5	12.2
		006	21.3	31.9	26.9	23.4	1.5	8.9	14.7
		008	26.4	39.6	34.6	31.1	1.6	10.7	17.7
		010	34.1	51.1	46.1	42.6	1.7	13.4	22.3
		012	37.1	55.6	50.6	47.1	1.7	14.4	24.1
		014	46.0	69.0	64.0	60.5	1.9	17.6	29.5
		017	58.3	87.4	82.4	78.9	2.1	21.9	36.9
		020	63.8	95.7	90.7	87.2	2.2	23.8	40.2
		022	70.3	105.4	100.4	96.9	2.3	26.1	44.1
		025*	79.3	118.9	113.9	110.4	2.5	29.2	49.5
		028*	88.8	133.2	128.2	125.8**	2.8	32.7	48.5**
031*	100.0	150.0	145.0	142.6**	2.8	36.5	54.4**		

*025-028-031=2500 R.P.M. max. **028-031=210 bar max.int. Port connection can be furnished with metric threads, normally UNC.

DOUBLE LIPS AND PISTON TYPE DOUBLE VANE PUMP

Specifications

Model	Pressure Port	Series	Displacement (cc/rev)	Delivery (lpm) At 1500 rpm			Input Power (kw)		
				P=0 bar	P=140 bar	P=240 bar	P=7 bar	P=140 bar	P=240 bar
K6DC	P1	014	47.6	71.4	62.1	55.9	2.3	18.5	30.6
		017	58.2	87.3	78.0	71.8	2.5	22.2	37.0
		020	66.0	99.0	89.7	83.5	2.8	24.9	41.7
		024	79.5	119.3	110.0	103.8	3.0	29.6	49.8
		028	89.7	134.5	125.2	119.0	3.2	33.2	55.9
		031	98.3	147.4	138.1	131.9	3.3	36.2	61.0
		035	111.0	166.5	157.2	151.0	3.5	40.7	68.7
		038	120.3	180.4	171.1	164.9	3.7	43.9	74.3
		042*	136.0	204.0	194.7	188.5	4.0	49.4	83.7
		045*	145.7	218.5	209.2	203.0	4.1	52.8	89.5
	050*	158.0	237.0	227.7	224.0*	4.4	57.0	85.0*	
	061*	190.5	285.7	278*	–	4.6	60.6*	–	
	P2	005	17.2	25.8	20.8	17.3	1.4	7.5	12.2
		006	21.3	31.9	26.9	23.4	1.5	8.9	14.7
		008	26.4	39.6	34.6	31.1	1.6	10.7	17.7
		010	34.1	51.1	46.1	42.6	1.7	13.4	22.3
		012	37.1	55.6	50.6	47.1	1.7	14.4	24.1
		014	46.0	69.0	64.0	60.5	1.9	17.6	29.5
		017	58.3	87.4	82.4	78.9	2.1	21.9	36.9
		020	63.8	95.7	90.7	87.2	2.2	23.8	40.2
022		70.3	105.4	100.4	96.9	2.3	26.1	44.1	
025		79.3	118.9	113.9	110.4	2.5	29.2	49.5	
KT6EC	P1	042	132.3	198.5	188.5	181.3	5.2	49.4	82.6
		045	142.4	213.6	203.6	196.5	5.4	52.9	88.7
		050	158.5	237.7	227.7	220.6	5.7	58.5	98.3
		052	164.8	247.2	237.2	230.1	5.8	60.8	102.1
		057	180.7	271.1	261.1	254	6.1	66.4	106.9
		062	196.7	295.0	285.0	277.9	6.4	71.9	121.3
		066	213.3	319.9	309.9	302.8	6.7	77.7	131.2
		072	227.1	340.6	330.6	323.5	6.9	82.6	139.5
		085*	269.8	404.7	397.7*	–	7.3	97.4*	–
	P2	005	17.2	25.8	20.8	17.3	1.4	7.5	12.2
		006	21.3	31.9	26.9	23.4	1.5	8.9	14.7
		008	26.4	39.6	34.6	31.1	1.8	10.7	17.7
		010	34.1	51.1	46.1	42.6	1.7	13.4	22.3
		012	37.1	55.6	50.6	47.1	1.7	14.4	24.1
		014	46.0	69.0	64.0	60.5	1.9	17.6	29.5
		017	58.3	87.4	82.4	78.9	2.1	21.9	36.9
		020	63.8	95.7	90.7	87.2	2.2	23.8	40.2
		022	70.3	105.4	100.4	96.9	2.3	26.1	44.1

For K6DC *042~061=2200 rpm max. 028, 031, 050=230 bar. 061=140 bar max int.

For K6EC *085=2000 rpm max. 028, 031=230 bar. 085=120 bar max int.

Port connection can be furnished with metric threads, normally UNC.

DOUBLE LIPS AND PISTON TYPE DOUBLE VANE PUMP

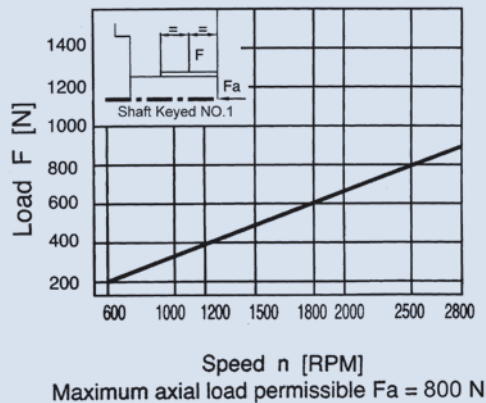
Specifications

Model	Pressure Port	Series	Displacement (cc/rev)	Delivery (lpm) At 1500 rpm			Input Power (kw)		
				P=0 bar	P=140 bar	P=240 bar	P=7 bar	P=140 bar	P=240 bar
KT6ED	P1	042	132.3	198.5	188.5	181.3	5.2	49.4	82.6
		045	142.4	213.6	203.6	196.5	5.4	52.9	88.7
		050	158.5	237.7	227.7	220.6	5.7	58.5	98.3
		052	164.8	247.2	237.2	230.1	5.8	60.8	102.1
		057	180.7	271.1	261.1	254	6.1	66.4	106.9
		062	196.7	295.0	285.0	277.9	6.4	71.9	121.3
		066	213.3	319.9	309.9	302.8	6.7	77.7	131.2
		072	227.1	340.6	330.6	323.5	6.9	82.6	139.5
	085	269.8	404.7	397.7	-	7.3	97.4	-	
	P2	014	47.6	71.4	62.1	55.9	2.3	18.5	30.6
		017	58.2	87.3	78	71.8	2.5	22.2	37
		020	66.0	99.0	89.7	83.5	2.8	24.9	41.7
		024	79.5	119.3	110.0	103.8	3.0	29.6	49.8
		028	89.7	134.5	125.2	119.0	3.2	33.2	55.9
		031	98.3	147.5	138.1	131.9	3.3	36.2	61.0
		035	111.0	166.5	157.2	151.0	3.5	40.7	68.7
		038	120.3	180.4	171.1	164.9	3.7	43.9	74.3
		042*	136.0	204.0	194.7	188.5	4.0	49.4	83.7
		045*	145.7	218.5	209.2	203.0	4.1	52.8	89.5
		050*	158.0	237.0	227.7	224.0*	4.4	57.0	85.0*
061*		190.5	285.7	278	-	4.6	60.6	-	

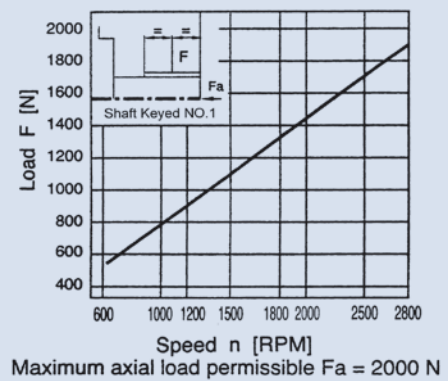
*042~061=2200 rpm max. 050=230 bar, 061=140 bar max. int. Port connection can be furnished with metric threads, normally UNC.

Permissible radial load

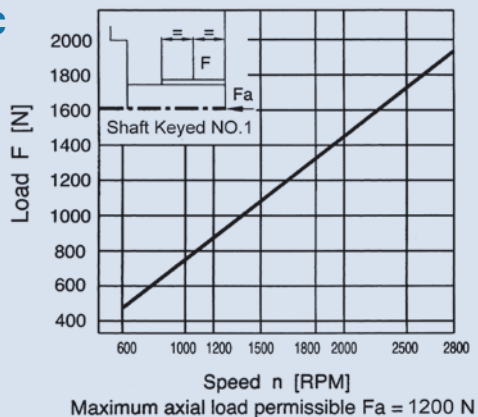
KT6CC



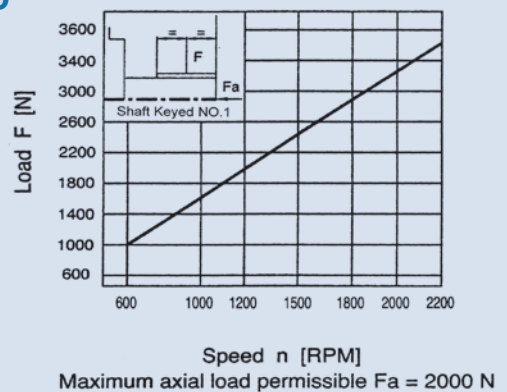
KT6EC



KT6DC



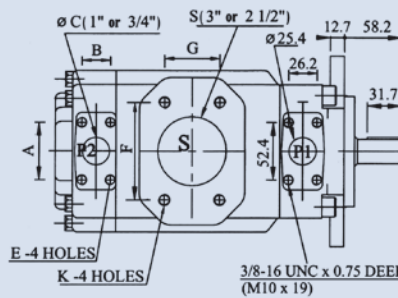
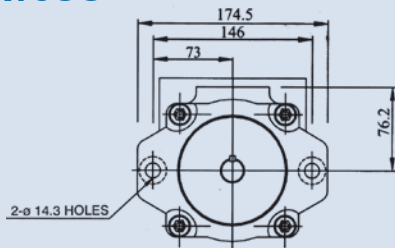
KT6ED



DOUBLE LIPS AND PISTON TYPE DOUBLE VANE PUMP

Dimensions

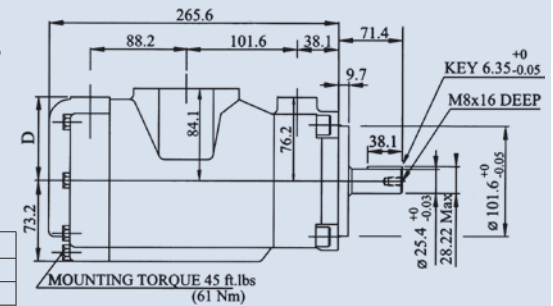
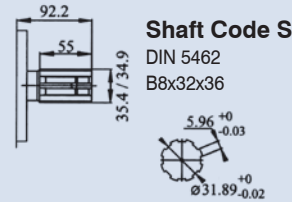
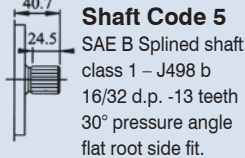
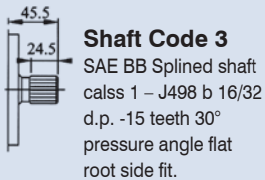
KT6CC



Shaft Code 1
(Keyed no SAE)

Unit:mm

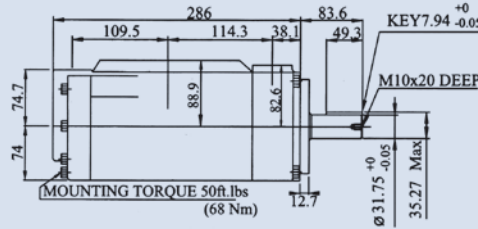
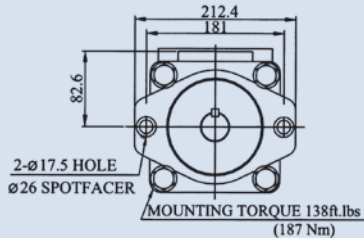
Shaft Code 2
(Keyed SAE BB)



Alternate Port								
	S = 3"				S = 2 1/2"			
F	106.4				88.9			
G	61.9				50.8			
øH	76.2				63.5			
Code	00	01	0M	W0	10	11	1M	W1
A	52.4	47.6	52.4	47.6	52.4	47.6	52.4	47.6
B	26.2	22.2	26.2	22.2	26.2	22.2	26.2	22.2
øC	25.4	19.0	25.4	19.0	25.4	19.0	25.4	19.0
D	74.7	76.2	74.7	76.2	74.7	76.2	74.7	76.2
E	3/8"-16UNCx19 deep		M10x19 deep		3/8"-16UNCx19 deep		M10x19 deep	
K	5/8"-11UNCx28.4 deep		M16x28.4 deep		1/2"-13UNCx23.9 deep		M12x24.0 deep	

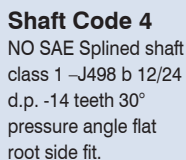
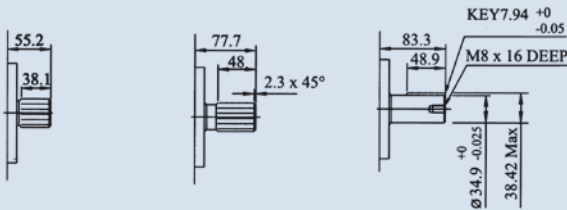
Shaft torque limits (cc/rev x bar)		
Pump	Shaft	Vp x P max. P1 + P2
KT6CC	1	14300
	2	21420
	3	32670
	5	20600

KT6DC



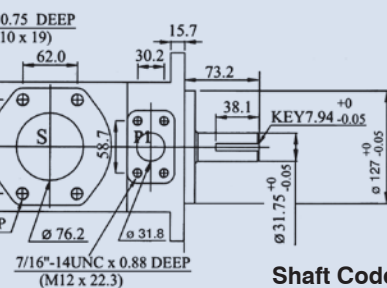
Unit:mm

Shaft Code 1
(Keyed SAE C)



KT6DCW
Shaft codes
(Keyed no SAE)

Shaft torque limits (cc/rev x bar)		
Pump	Shaft	Vp x P max. P1 + P2
KT6DC	1	43240
	2	34590
	3	61200
	4	61200
	5	55600



Shaft Code 2
(Keyed no SAE)

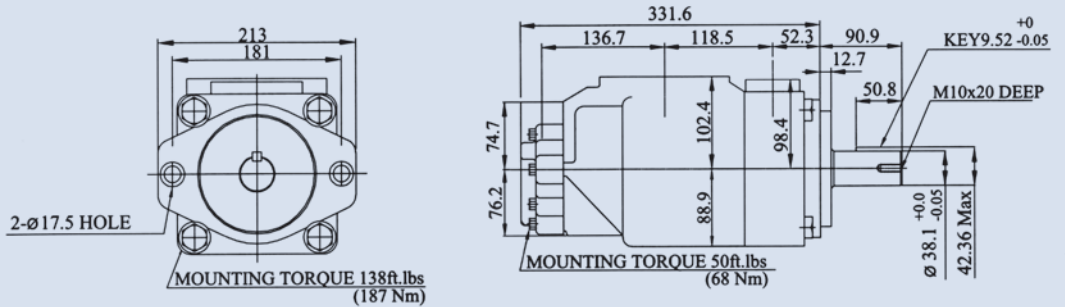
Alternate connect. variables		
	00 & Mo	01 & M1
A	1.031 (26.2)	0.874 (22.2)
B	2.06 (52.4)	1.874 (47.6)
C	1.0 (25.4)	0.75 (19.05)

DOUBLE LIPS AND PISTON TYPE DOUBLE VANE PUMP

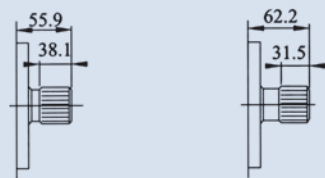
Dimensions

KT6EC

Unit:mm



Shaft Code 1
(Keyed SAE CC)

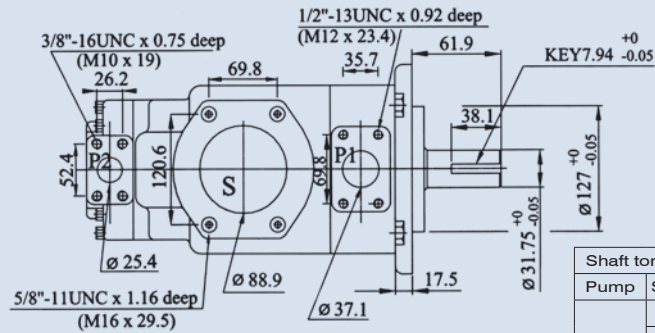


Shaft Code 3

SAE C Splined shaft calss 1 – J498 b 12/24 d.p. -14 teeth 30° pressure angle flat root side fit.

Shaft Code 4

SAE CC Splined shaft class 1 – J498 b 12/24 d.p. -17 teeth 30° pressure angle flat root side fit.

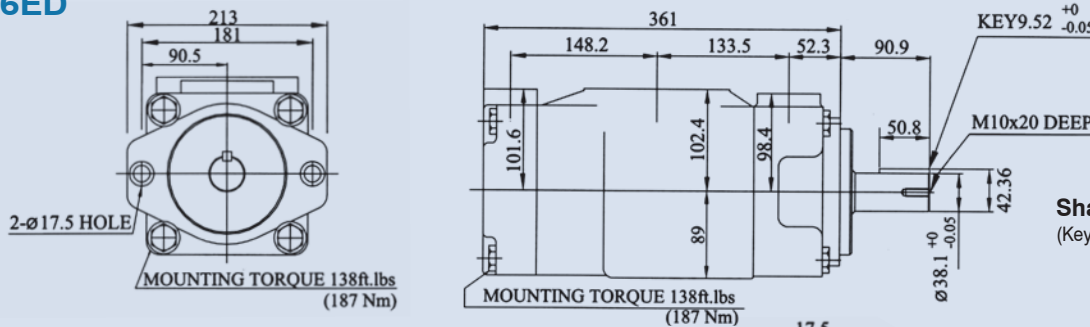


Shaft Code 2
(Keyed no SAE)

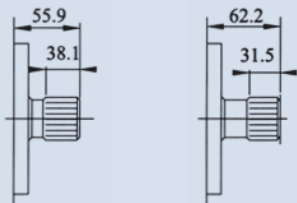
Shaft torque limits (cc/rev x bar)		
Pump	Shaft Vp x P max. P1 + P2	
KT6EC	1	72306
	2	34590
	3	61200
	4	76376

KT6ED

Unit:mm



Shaft Code 1
(Keyed SAE CC)

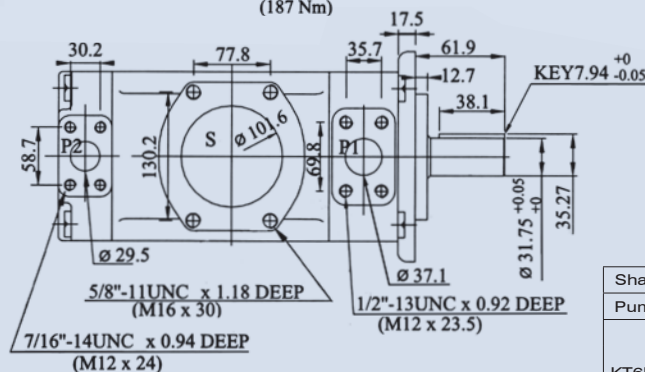


Shaft Code 3

SAE C Splined shaft calss 1 – J498 b 12/24 d.p. -14 teeth 30° pressure angle flat root side fit.

Shaft Code 4

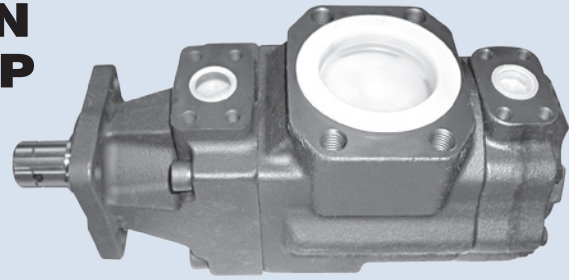
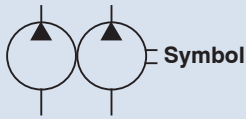
SAE CC Splined shaft class 1 – J498 b 12/24 d.p. -17 teeth 30° pressure angle flat root side fit.



Shaft Code 2
(Keyed no SAE)

Shaft torque limits (cc/rev x bar)		
Pump	Shaft Vp x P max. P1 + P2	
KT6ED	1	72306
	2	34590
	3	61200
	4	76376

DOUBLE LIPS AND PISTON TYPE DOUBLE VANE PUMP



How to order

KT6GCC - 022 - 008 - 6 - R - 00 - A 1 - 00 - ✱



1 Model KT6GCC (KT6GC+KT6GC)
The large cartridge must be always mounted in the front.

2 Cam ring P1 & P2

3 Shaft type 6: splined (DIN 5462)

4 Shaft rotation (viewed from shaft end) R: Clockwise L: Counter-clockwise

5 Porting combination 00: Normal

6 Design letter

7 Seal class 1: S1 (for mineral oil)

8 Port size

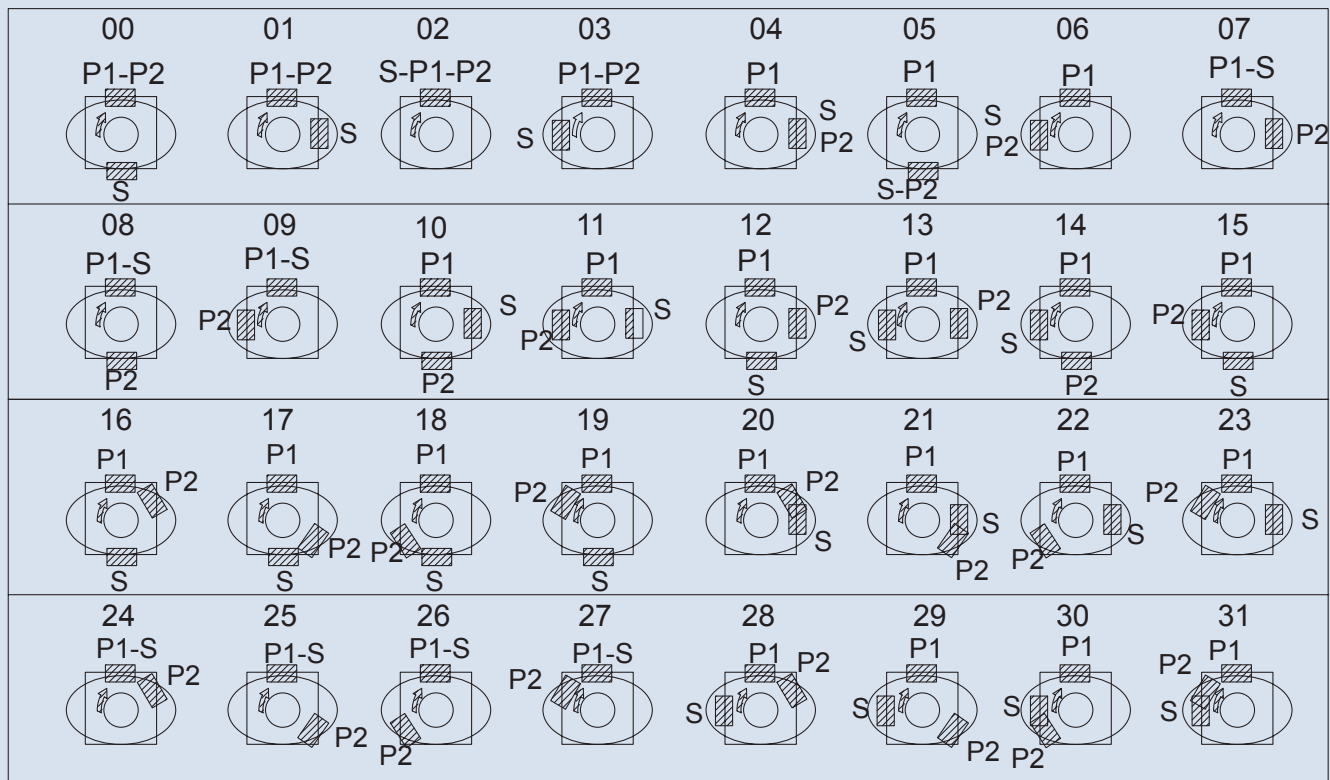
		P1=1",S=3"		P1=1",S=2 1/2" ²⁾	
		1"	3/4" ¹⁾	1"	3/4" ¹⁾
Code	UNC	00	01	10	11
	Metric	0M	M0	1M	M1

1)for 46cc/rev.max.

2)for 126cc/rev.max.

9 Modifications weight: 28 kgs

Port combinations



DOUBLE LIPS AND PISTON TYPE DOUBLE VANE PUMP

Specifications

Model	Pressure Port	Series	Displacement (cc/rev)	Delivery (lpm) At 1500 rpm			Input Power (kw) At 1500 rpm			Max. Pressure (bar)	Runing Speed (rpm)	
				p=0 bar	p=140 bar	p=240 bar	p=7 bar	p=140 bar	p=240 bar		Max.	Min.
KT6GCC	P1 & P2	003	10.8	16.2	10.7		1.3	5.3		300	3000	600
		005	17.2	25.8	20.3	15.8	1.4	7.5	12.2			
		006	21.3	31.9	26.5	22.0	1.5	8.9	14.7			
		008	26.4	39.6	34.1	29.6	1.6	10.7	17.7			
		010	34.1	51.1	45.7	41.2	1.7	13.4	22.3			
		012	37.1	55.6	50.2	45.7	1.7	14.4	24.1			
		014	46.0	69.0	63.5	59.0	1.9	17.6	29.5			
		017	58.3	87.4	82.0	77.5	2.1	21.9	36.9			
		020	63.8	95.7	90.2	85.7	2.2	23.8	40.2			
		022	70.3	105.4	100.0	95.5	2.3	26.1	44.1			
		025	79.3	118.9	113.5	109.0	2.5	29.2	49.5			
		028	88.8	133.2	127.7	124.5 2)	2.8	32.7	48.5			
		031	100.0	150.0	144.5	141.3 2)	2.8	36.5	54.2	230	2800	

Not to use because internal leakage greater than 50% theoretical flow.

Dimensions

Unit:mm

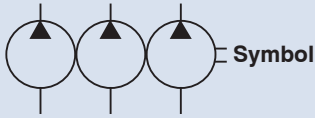
Port	A	B	C	D	E
S (3")	106.4	61.9	76.2		5/8-11UNC X 1.12 (M16 X 28.4 deep)
S (2 1/2")	88.9	50.8	63.5		1/2-13 UNC X 0.94 (M12 X 24 deep)
P2 (3/4")	47.7	22.2	19.0	76.2	3/8-16UNC X 0.75 (M10 X 19.0 deep)
P2 (1")	52.4	26.2	25.4	74.7	

Shaft torque limits (cc/rev x bar)	
Shaft	Vp x P max.(P1+P2)
6	32670

Shaft Code 6
DIN5462B8 x 32 x 36

MOUNTING TORQUE 45ft.lbs (61 Nm)
MOUNTING TORQUE 117ft.lbs (159 Nm)

DOUBLE LIPS AND PISTON TYPE TRIPLE VANE PUMP



How to order

KT6DCC - 038 - 022 - 008 - 1 - R - 00 - A 1 - 00 - ✱

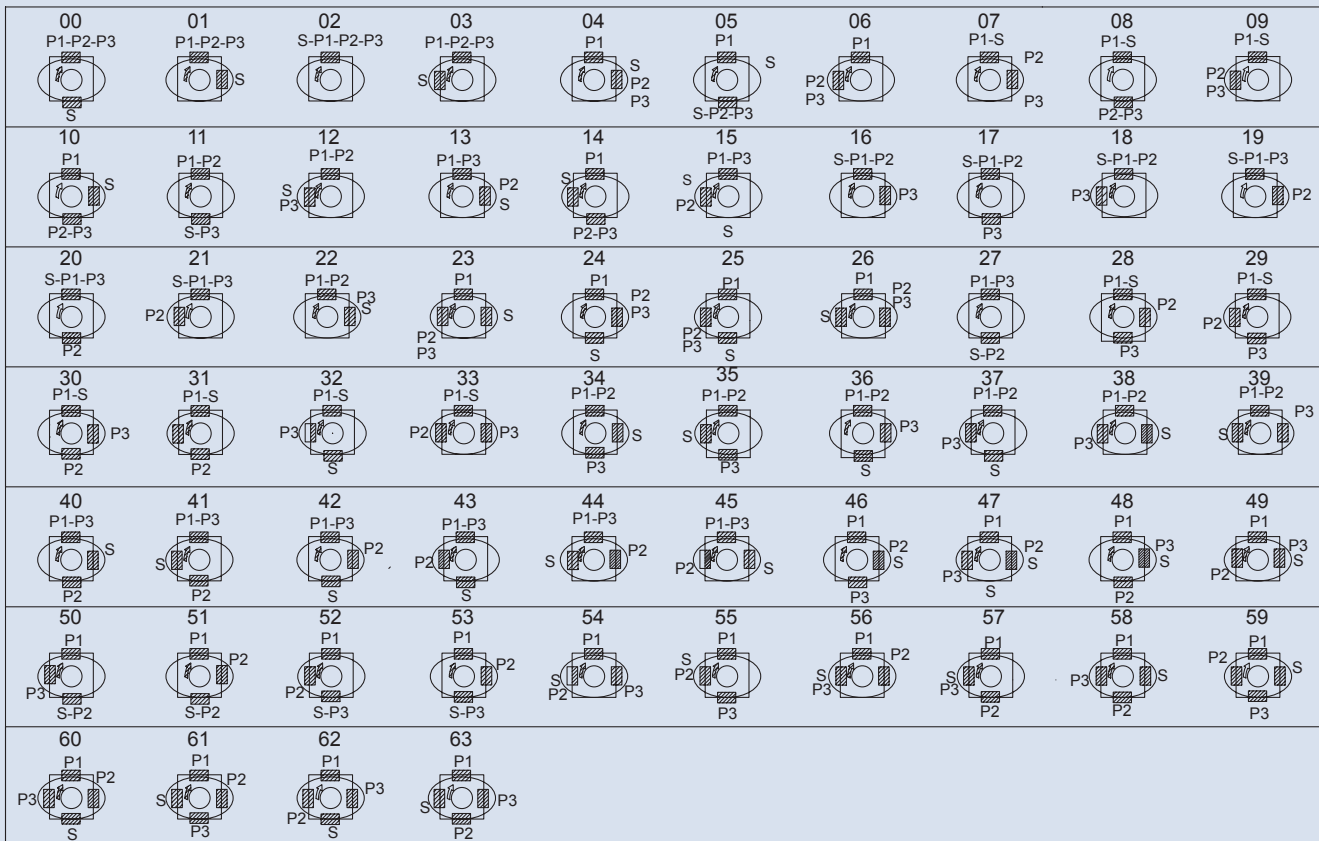


- 1** Model KT6DCC (KT6D+KT6C+KT6C)
- 2** Cam ring P1 P2 P3
- 3** Shaft type
- 4** Shaft rotation R: Clockwise L: Counter-clockwise
- 5** Porting combination 00: Normal
- 6** Design letter
- 7** Seal class 1: S1 (for mineral oil) 4: S4 (for fire resistant fluids) 5: S5 (for mineral oil and fire resistant fluids)
- 8** Port size

	UNC		Metric	
	00	01	M0	M1
P3	1"	3/4"	1"	3/4"

- 9** Modifications weight: 65 kgs

Port combinations



DOUBLE LIPS AND PISTON TYPE TRIPLE VANE PUMP

Specifications

Model	Pressure Port	Cam Ring	Displacement (cc/rev)	Delivery (lpm) At 1500 rpm			Input Power (kw) At 1500 rpm			Max. Pressure (bar)	Runing Speed (rpm)	
				p=0 bar	p=140 bar	p=240 bar	p=7 bar	p=140 bar	p=240 bar		Max.	Min.
KT6DCC	P1	014	47.6	71.4	62.1	55.9	2.3	18.5	30.6	300	2800	600
		017	58.2	87.3	78.0	71.8	2.5	22.2	37.0			
		020	66.0	99.0	89.7	83.5	2.8	24.9	41.7			
		024	79.5	119.3	110.0	103.8	3.0	29.6	49.8			
		028	89.7	134.5	125.2	119.0	3.2	33.2	55.9			
		031	98.3	147.5	138.1	131.9	3.3	36.2	61.0			
		035	111.0	166.5	157.2	151.0	3.5	40.7	68.7			
		038	120.3	180.4	171.1	164.9	3.7	43.9	74.3			
		042 1)	136.0	204.0	194.7	188.5	4.0	49.4	83.7			
		045 1)	145.7	218.5	209.2	203.0	4.1	52.8	89.5			
	050 1)	158.0	237.0	227.7	224.0 2)	4.4	57.0	85.0 2)				
	P2 - P3	003	10.8	16.2	10.7		1.3	5.3				
		005	17.2	25.8	20.3	15.8	1.4	7.5	12.2			
		006	21.3	31.9	26.5	22.0	1.5	8.9	14.7			
		008	26.4	39.6	34.1	29.6	1.6	10.7	17.7			
		010	34.1	51.1	45.7	41.2	1.7	13.4	22.3			
		012	37.1	55.6	50.2	45.7	1.7	14.4	24.1			
		014	46.0	69.0	63.5	59.0	1.9	17.6	29.5			
		017	58.3	87.4	82.0	77.5	2.1	21.9	36.9			
		020	63.8	95.7	90.2	85.7	2.2	23.8	40.2			
022		70.3	105.4	100.0	95.5	2.3	26.1	44.1				
025	79.3	118.9	113.5	109.0	2.5	29.2	49.5					
028	88.8	133.2	127.7	124.5 3)	2.8	32.7	48.5 3)					
031	100.0	150.0	144.5	141.3 3)	2.8	36.5	54.2 3)					

1) 042-045-050=2500 rpm max. 2) 050=230 bar max. int. 3) 028-031=230 bar max. int.

Dimensions

Unit:mm

NO.4 Shaft
SAE CC splined shaft
Class I-J498 b 12/24 d.p.
-17 teeth 30°
pressure angle flat root
side fit

NO.1 Shaft (keyed no SAE)

NO.2 Shaft (keyed SAE CC)

NO.3 Shaft
SAE C splined shaft
Class 1-J498 b
12/24 d.p.-14 teeth 30°
pressure angle
flat root side fit

Shaft	Vp x p max. (P1 + P2 + P3)
1	43240
2	66500
3	61200
4	66500

PORT	CODE	A	B	C
P3	00 & M0	52.4	26.2	25.4
	01 & M1	47.6	22.2	19.0