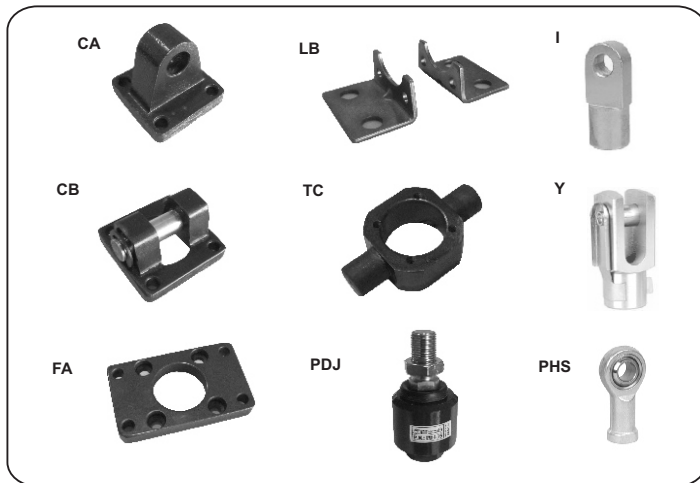


SC/SU Series Cylinder Mountings and Piston Rod Adaptors

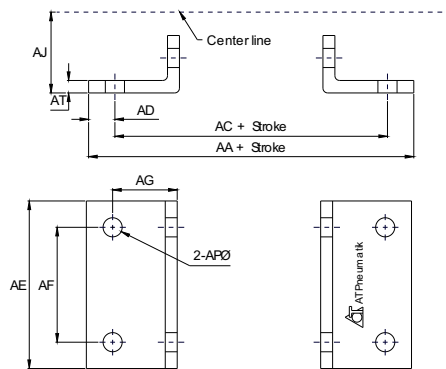


Ordering Code

- SC** - **LB** - **32**
- SC** - Tie Rod Type Pneumatic Cylinder
 - SU** - Profile Type Pneumatic Cylinder
 - LB** - Foot Mounting
 - FA** - Front / Rear Mounting
 - CA** - Male Clevis Mounting
 - CB** - Female Clevis Mounting
 - TC** - Trunnion Mounting
 - Y** - Y-Knuckle Piston Rod Adaptor
 - I** - I-Knuckle Piston Rod Adaptor
 - 32** - Cylinder Bore Diameter (mm)

SC/SU Pneumatic Cylinder mountings and Piston rod adaptors are made of Low Carbon Steel materials.

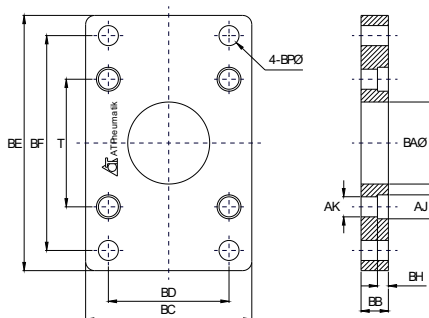
SC/SU - LB Foot Mounting



SC/SU - LB Dimension

Bore Diameter	32	40	50	63	80	100	125	160	200
AA	153	169	173	184	200	210	249	328	380
AC	134	140	149	158	168	174	213	288	320
AD	9.5	14.5	12	12	16	18	18	20	30
AE	50	57	68	80	97	112	140	180	220
AF	33	36	47	56	70	84	90	115	135
AG	20.5	23.5	28	31	30	30	45	60	70
AJ	28	30	36.5	41	49	57	90	115	135
AP	9	12	12	12	14	14	16	18	22
AT	3.2	3.2	3.2	3.2	4	4	8	8	10

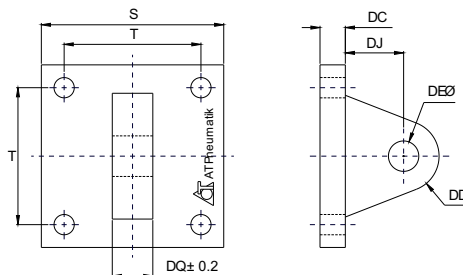
SC/SU - FA Flange Mounting



SC/SU - FA Dimension

Bore Diameter	32	40	50	63	80	100	125	160	200
BA	28.3	32.3	38.3	38.3	47.3	47.3	56	63	81
BB	10	10	10	12	16	16	20	25	25
BC	47	52	65	76	95	115	140	180	220
BD	33	36	47	56	70	84	90	115	135
BE	72	84	104	116	143	162	224	280	320
BF	58	70	86	98	119	138	180	230	270
BH	6.5	6.5	6.5	8.5	10.5	10.5	15	20	20
AJ	10.5	10.5	10.5	13.5	16.6	16.6	19	25	25
AK	6.5	6.5	6.5	8.5	10.5	10.5	12.5	16.5	16.5
BP	7	7	9	9	12	12	16	18	22
T	33	37	47	56	70	84	110	140	175

SC/SU - CA Male Clevis Mounting



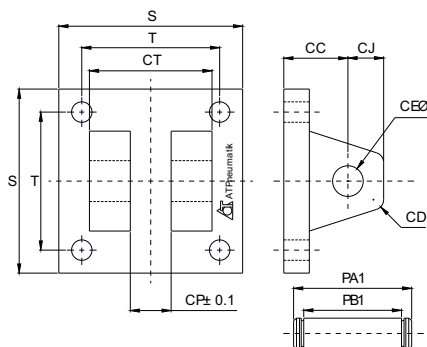
SC/SU - CA Dimension

Bore Diameter	32	40	50	63	80	100	125	160	200
S	48	50	62	75	94	112	140	180	220
T	33	37	47	56	70	84	110	140	175
DC	34	34	34	34	48	48	50	55	60
DD	14	14	15	15	20	20	25	30	30
DE	12	14	14	14	20	20	25	30	30
DJ	14	14	15	15	20	20	25	30	30
DQ	16	20	20	20	32	32	70	90	90

Dimensions are in mm

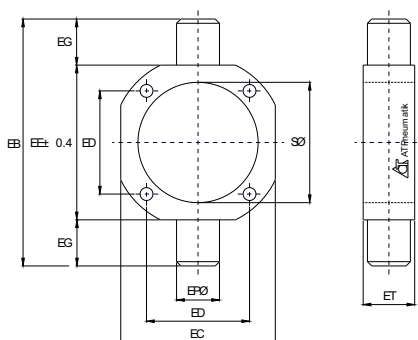
SC/SU Series Cylinder Mountings and Piston Rod Adaptors

SC/SU - CB Female Clevis Mounting



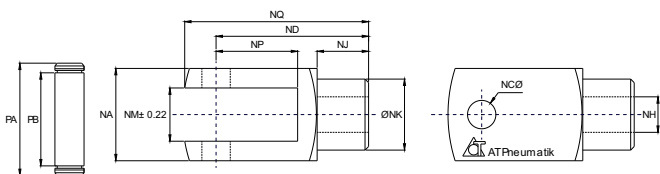
SC/SU - CB Dimension									
Bore Diameter	32	40	50	63	80	100	125	160	200
CC	19	19	19	19	32	32	50	55	60
CD	5	5	3	3	8	8	25	30	30
CE	12	14	14	14	20	20	25	30	30
CJ	13	13	15	15	21	21	25	30	30
CP	16.3	20.5	20.3	20.3	32.3	32.3	70	90	90
CT	32	44	52	52	64	64	120	160	160
PAI	41	51.8	60.3	60.3	73.8	73.8	130	170	170
PBI	33.5	45.8	54	54	65.5	65.5	121.5	161.5	161.5
S	48	50	62	75	94	112	140	180	220
T	33	37	47	56	70	84	110	140	175

SC/SU - TC Trunnion Mounting

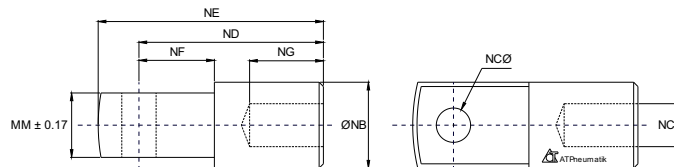


SC - TC Dimension								
Bore Diameter	40	50	63	80	100	125	160	200
EB	113	126	138	164	182	210	264	336
EC	63	76	88	114	132	160	200	245
ED	37	47	56	70	84	110	140	175
EE	63	76	88	114	132	160	200	245
EG	25	25	25	25	25	25	32	35
EP	25	25	25	25	25	30	32	32
ET	30	30	30	35	40	38	38	52
S	45.5	55.5	68.5	87.5	107.5	134.5	172.5	212.5

Y Piston Rod Adaptor

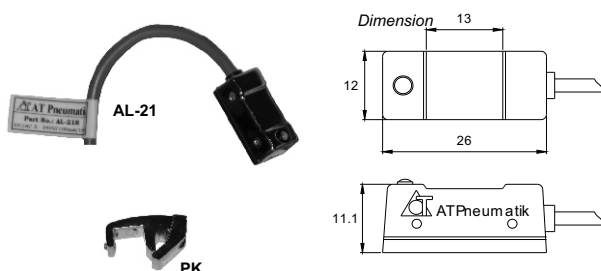


I Piston Rod Adaptor



Piston Rod Adaptor Dimension															
Bore Diameter	NA	NB	NC	ND	NE	NF	NG	NH	NJ	NK	NM	NP	NQ	PA	PB
32	19	20	10	40	52	15	20	M10 X 1.25	12	18	10	20	52	26.2	20
40	25.4	24	12	48	67	24	20	M12 X 1.25	20	23	12	24	62	32.8	26.5
50	32	32	16	64	89	32	23	M16 X 1.5	22	30	16	32	83	39.3	33
63	32	32	16	64	89	32	23	M16 X 1.5	22	30	16	32	83	39.3	33
80	44.4	40	20	80	112	40	30	M20 X 1.5	30	39	20	40	105	53.3	45
100	44.4	40	20	80	112	40	30	M20 X 1.5	30	39	20	40	105	53.3	45

SC / SU Series Magnetic Switch and Holder



Reed Switch Specification					
Model	Output	Current	Response	Indicator	Wire
AL-21-R	Contact	5-240Vac 5-110Vdc	5-60mA 1msec max.	LED	2M
AL-21-NPN	NPN	5-30Vdc			
AL-21-PNP	PNP				

When Ordering of Reed Switch Holder PK specify the Bore Diameter of Cylinder