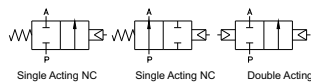


2K200 Series Angle Seat Valve

2/2 way Angle Seat Valve



Ordering Code

2K200 - 10 - T - D - 1 - NC - Blank

2K200 - 2/2 way Plastic Actuator Angle Seat Valve

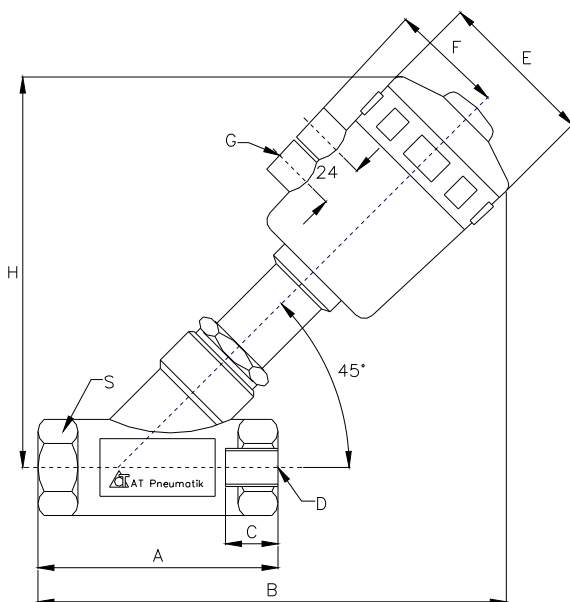
10	- 3/8"	D	- Bronze (Body)
15	- 1/2"	SS304	- SS304 (Body)
20	- 3/4"	SS316	- SS316 (Body)
25	- 1"		
32	- 1 1/4"	1	- Single Acting
40	- 1 1/2"	2	- Double Acting
50	- 2"		

T - Threaded

Blank	- Flow Over the Seat	NC	- Normally Closed
U	- Flow Under the seat	NO	- Normally Open

When ordering of Single Acting Angle Seat Valve, medium flow direction must be specified, however for double acting not necessary to specify the direction of flow.

2K200 - 2 way Angle Seat Valve



Angle Seat Valve Dimension

Size	A	B	C	D	E	F	G	S
15	85	173	12	1/2"	64	44	2 x 1/4"	27
20	95	178	12	3/4"	64	44	2 x 1/4"	32
25	105	212	14	1"	80	52	2 x 1/4"	41
32	118	236	16	1 1/4"	80	52	2 x 1/4"	55
40	130	230	18	1 1/2"	80	52	2 x 1/4"	55
50	150	238	20	2"	100	5	2 x 1/4"	70

For Single Acting Angle Seat Valve always specify the direction of flow for correct sizing of actuator, under the seat flow is recommended to avoid the piston seat hammering, which may result damage on the valve seat.

2K200 Series Angle Seat Valve Specification

Part Number	2K200-15	2K200-20	2K200-25	2K200-32	2K200-40	2K200-40
Working Medium	Water, Oil, Gas					
Mounting	Any position					
Type	Normally Closed or open / Double or Single Acting					
Flow Rate M ³ /h	4	8	19	28	42	55
Actuator Port	G 1/4"					
Actuator Size	50	50	63	63	63	80
Working Pressure Mpa	1.6	1.1	1.1	1.5	1.25	1
Control Pressure Mpa	0.39	0.39	0.42	0.5	0.44	0.4
Operating Temperature	5 ~ 180°C					
Actuator Material	Polyamide					
Body Material	Brass, SS316, SS316L					
Seal Material	PTFE Teflon					

Dimensions are in mm