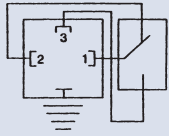
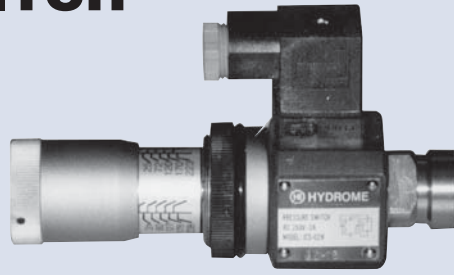


PRESSURE SWITCH



USED CURRENT
AC 250V 3A



JCS-02N, 02NL, 02NLL



JPS-02HM, 02L, 02LL

H

How to order

JCS - 02 - N

	1	2	3
1	Model	Body: Cast iron	
2	Port size	PT1/4"	
3	Pressure adjusting range	N: 30~230 bar NL: 5~60 bar	NL: 15~60 bar

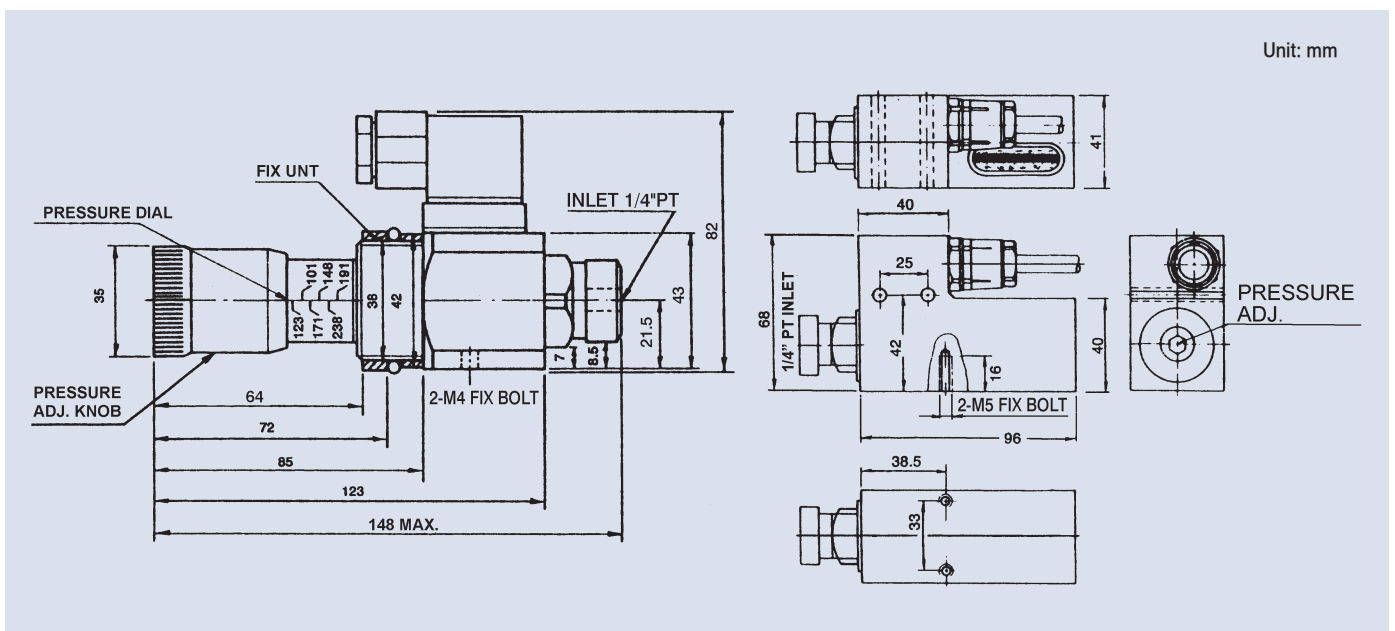
JPS - 02 - HM

	1	2	3
1	Model	Body: cast iron	
2	Port size	PT1/4"	
3	Pressure adjusting range	HM: 30~230 bar LL: 5~60 bar	L: 15~60 bar

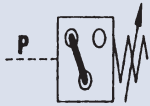
Specifications

Model	Pressure Adj. Range (bar)	Max. Pressure (bar)	Weight (kg)
JCS-02N	30~230	230	0.9
JCS-02NL	15~60	230	0.9
JCS-02NLL	5~60	230	0.9
JPS-02HM	30~230	230	1.45
JPS-02L	15~60	230	1.45
JPS-02LL	5~60	230	1.45

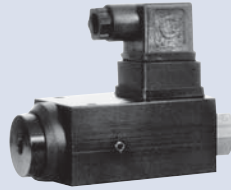
Dimensions



PRESSURE SWITCH



APSA



APSB



APSC



APSG



APSH

How to order

APSA,APSB,APSC - 230 - 1

	1	2	3
1	Model	Pipe connection type	Body: Aluminum alloy
2	Pressure adjusting range (bar)		
3	Port size	1: 1/4"PT 2: 1/4"NPT 3: 1/4"SAE 4: 1/4"BSP	

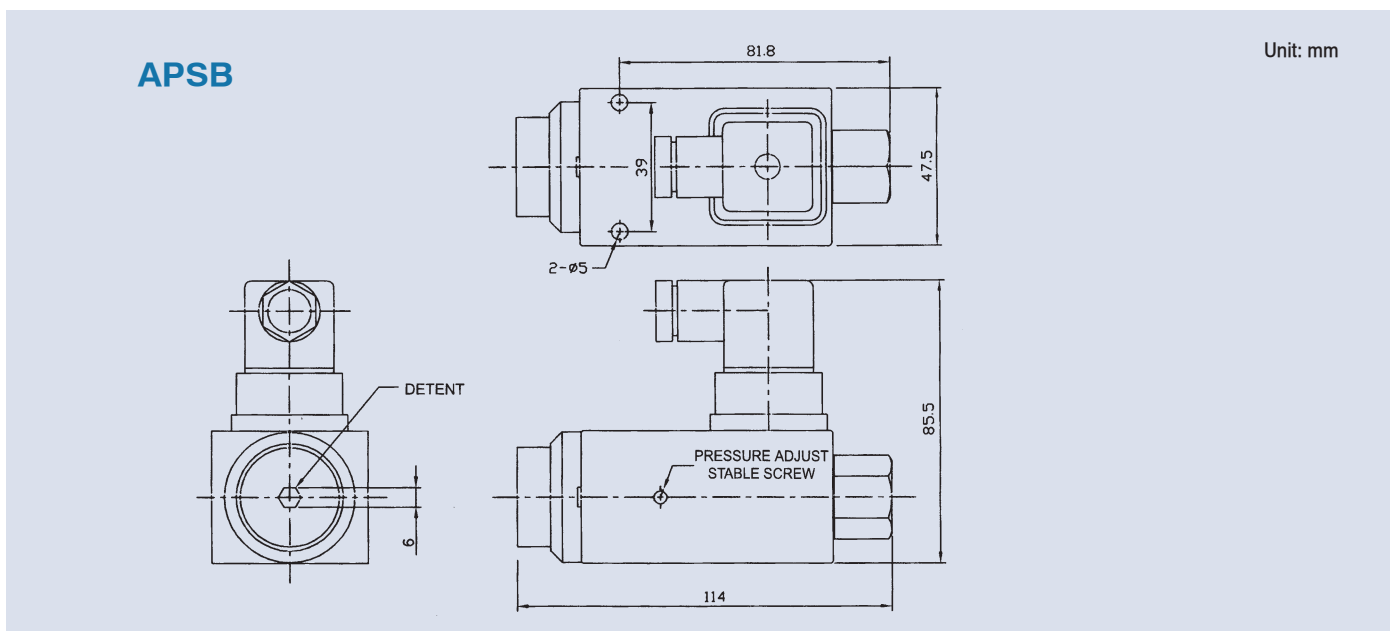
APSH,APSG - 60

	1	2
1	Model	Sub-plate mounting type
		Body: AL6061-T6
2	Pressure adjusting range (bar)	

Specifications

Model	Pressure Adj. Range (bar)	Max. Overpressure (bar)	Repetition Accuracy	Max. Voltage Current	Weight (kg)
APSA	35: 5~35 70: 10~70	600	±1%	250 VAC (3A) 30 VDC (4A)	0.75
APSB	150: 30~150 230: 50~230 420: 90~420				0.67
APSC	60: 5~60 125: 10~125 275: 25~275 400: 30~400				0.6
APSG	60: 5~60 125: 10~125				0.6
APSH	275: 25~275				0.57

Dimensions

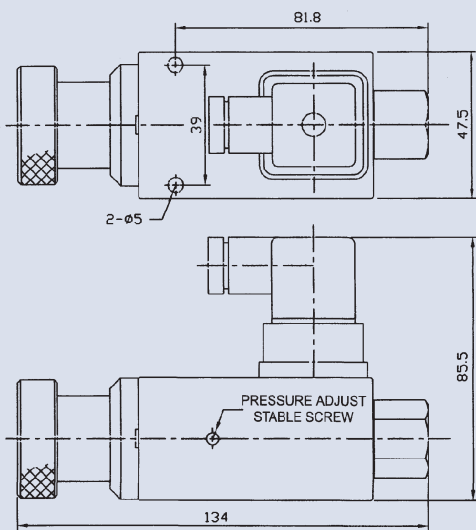


PRESSURE SWITCH

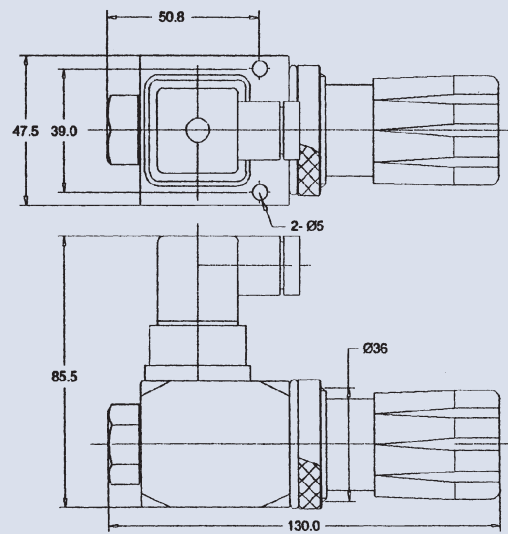
Dimensions



APSA

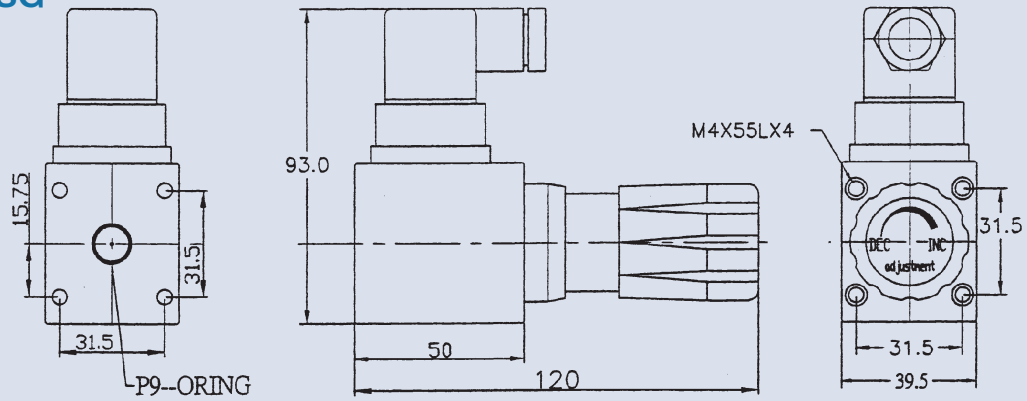


APSC

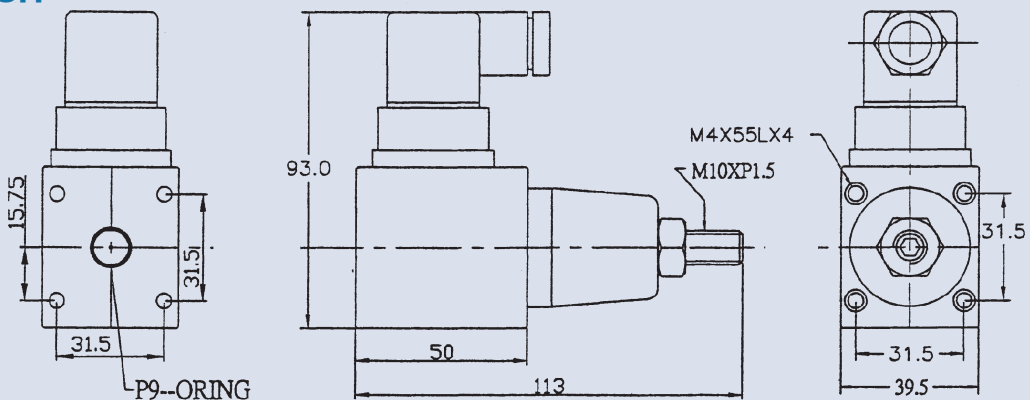


Unit: mm

APSG



APSH

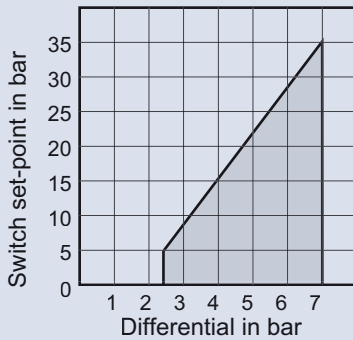


PRESSURE SWITCH

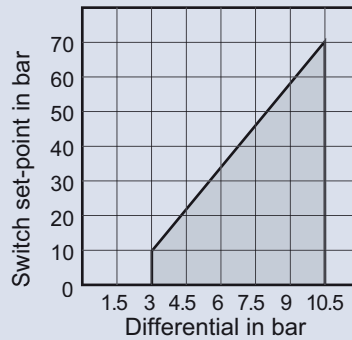
Performance curves



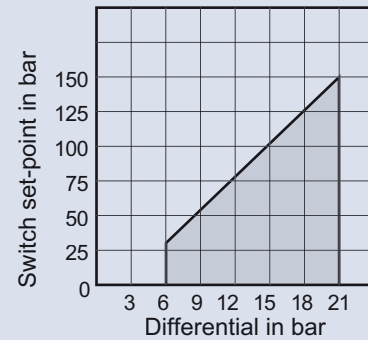
APSA, APSB-35



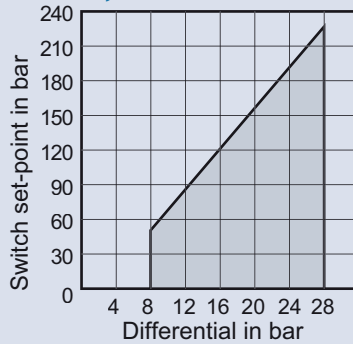
APSA, APSB-70



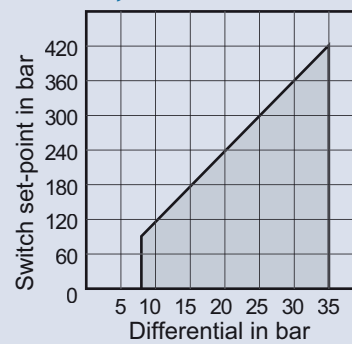
APSA, APSB-150



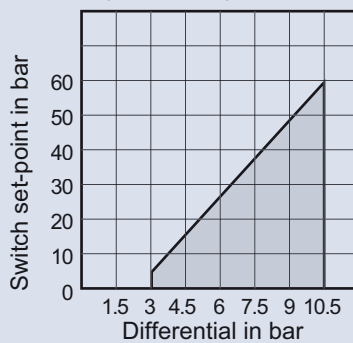
APSA, APSB-230



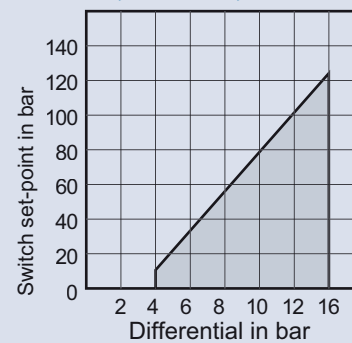
APSA, APSB-420



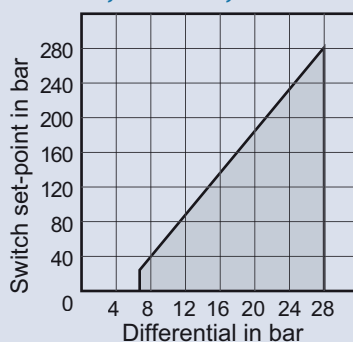
APSC, APSG, APSH-60



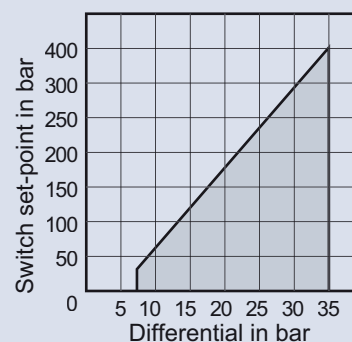
APSC, APSG, APSH-125



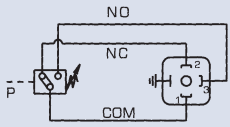
APSC, APSG, APSH-275



APSC-400



PRESSURE SWITCH



NO=Normally open
NC=Normally closed



DNF



DNA



DNB

H

How to order

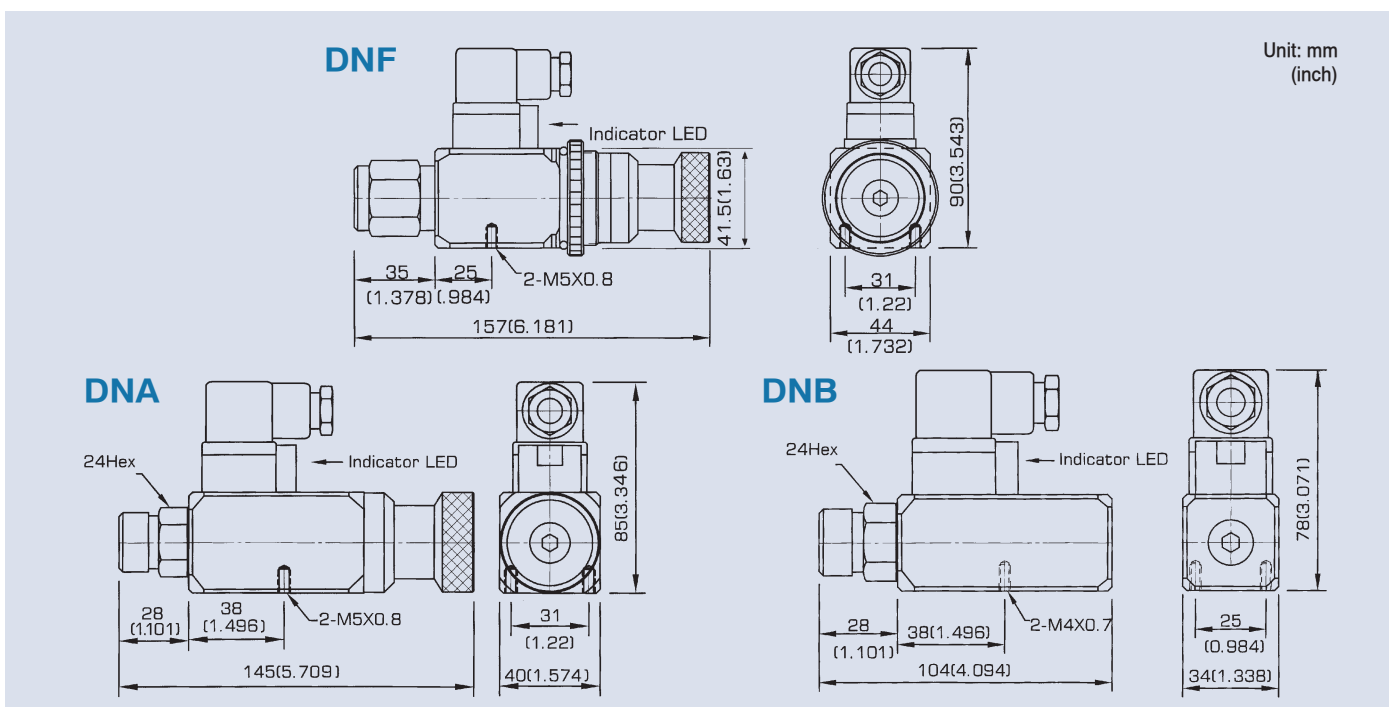
DNF - 100 - 22B - 1

	1	2	3	4
1	Model	DNF: Panel mounting type	DNA: Standard type	DNB: Tool adjustment type
2	Pressure adjusting range (bar)			
3	22B: Without indicator led	06I: With indicator led		
4	Port size	1: 1/4"PT	2: 1/4"NPT	3: 1/4"PF (G)

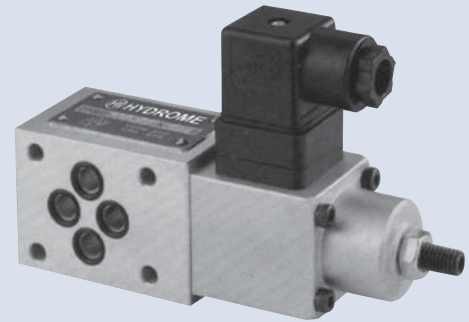
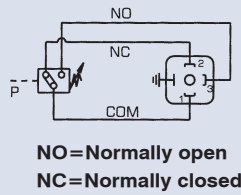
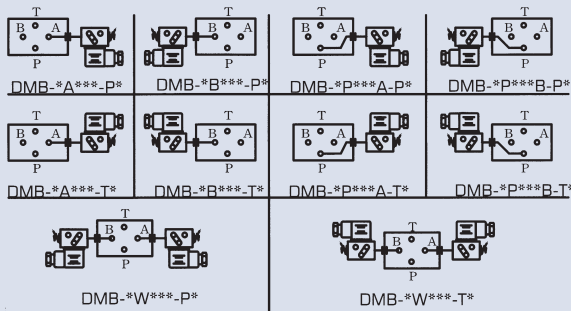
Specifications

Model	Pressure Adj. Range (bar)	Max. Pressure (bar)	Max. Voltage Current (lpm)	Weight (kg)
DNF	40: 6~40 70: 10~70 100: 15~100 150: 20~150	40: 150 70: 150 100: 250 150: 250	22B: 250 VAC (3A) 30 VDC (2A)	1.2
DNA	250: 40~250 360: 50~360	250: 400 360: 400	06I: 250 VAC (<0.6A) 24 VDC (<0.6A)	1
DNB	40: 6~40 70: 10~70 150: 20~150 250: 40~250	40: 150 70: 150 150: 250 250: 400		0.6

Dimensions



MODULAR PRESSURE SWITCH



How to order

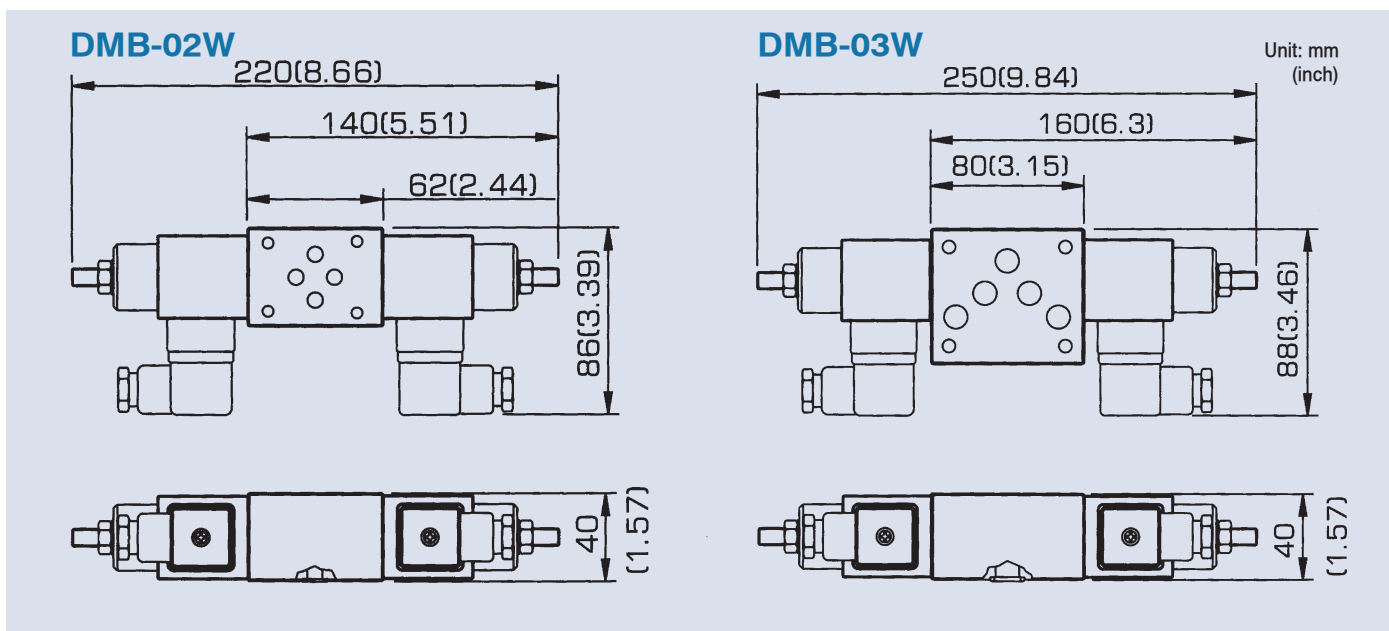
DMB - 02 P 250 A - P B

	1	2	3	4	5	6	7
1	Model DMB: Modular type						
2	For valve size 02: ISO CETOP 3, NFPA D03, DIN NG 6 03: ISO CETOP 5, NFPA D05, DIN NG 10						
3	Control port A: A port B: B port P: P port W: A and B ports						
4	Pressure adjusting range 40: 6~40 bar 70: 8~70 bar 150: 15~150 bar 250: 40~250 bar						
5	Position of the pressure adjustment						
6	Position of the electrical connector						
7	B: Without indicator led I: With indicator led						

Specifications

Model	Pressure Adj. Range (bar)	Max. Pressure (bar)	Max. Voltage Current (lpm)	Weight (kg)
DMB-02P (A,B)			B: 250 VAC (3A) 30 VDC (2A)	0.55
DMB-02W	40: 6~40 70: 8~70	40: 150 70: 150		0.80
DMB-03P (A,B)	150: 15~150 250: 40~250	150: 250 250: 400	I: 250 VAC (<0.6A) 24 VDC (<0.6A)	0.90
DMB-03W				1.5

Dimensions



MINIATURE PRESSURE SWITCH



APSI



APSL



H

How to order

APSI, APSL - 250 - 1

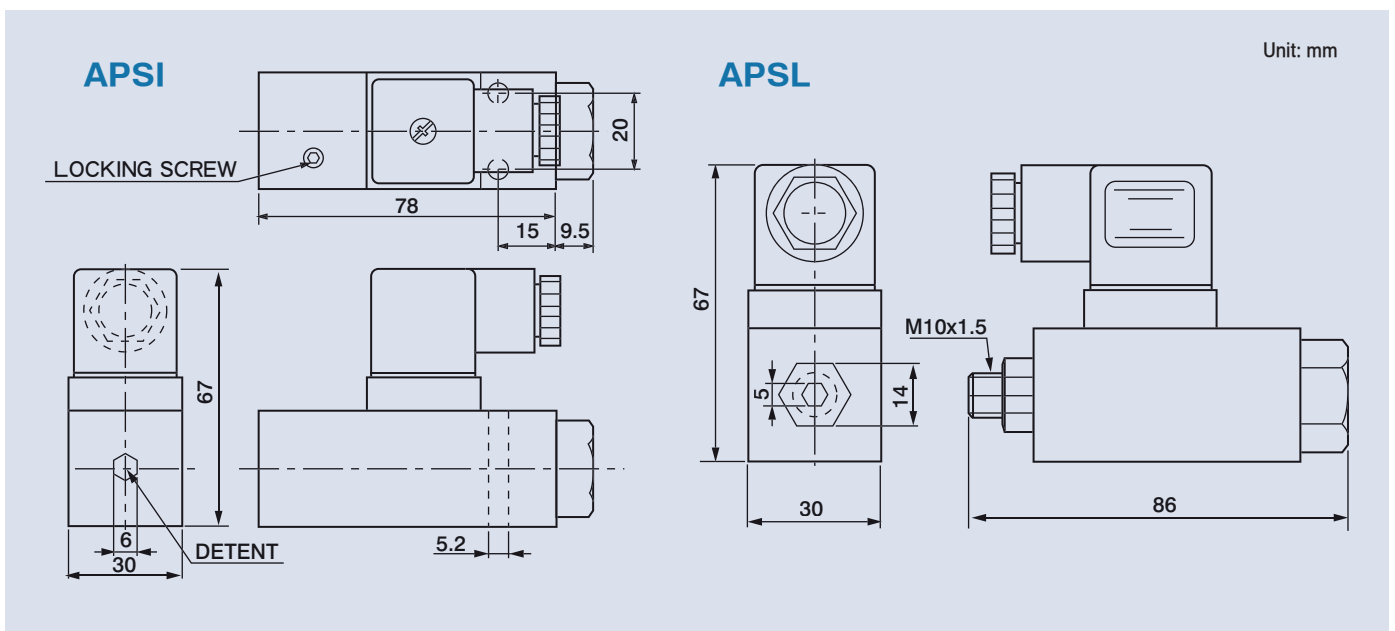
1 2 3

- 1 Model Body: Aluminum alloy
- 2 Pressure adjusting range (bar)
- 3 Port size 1: 1/4"PT

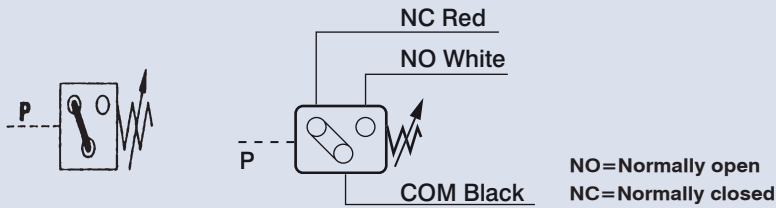
Specifications

Model	Pressure Adj. Range (bar)	Max. Overpressure (bar)	Repetition Accuracy	Max. Voltage Current	Weight (kg)
APSI	70: 5~70 150: 10~150 250: 25~250 400: 30~400	500	±1%	250 VAC (3A)	0.3
APSL	35: 5~35 70: 10~70 250: 25~250	400		30 VDC (4A)	0.26

Dimensions



MINIATURE PRESSURE SWITCH



How to order

TC - 250 - 1

- | 1 | 2 | 3 |
|---|---|---|
| 1 | Model | |
| 2 | Pressure adjusting range (bar) | |
| 3 | Port size 1: 1/4"PT (RC) 2: 1/4"NPT 3: 1/4"PF (G) | |

Specifications

Model	Pressure Adj. Range (bar)	Max. Pressure (bar)	Max. Voltage Current	Weight (kg)
TC-050	6~50	150	250 VAC (3A) 30 VDC (2A)	0.15
TC-100	10~100	300		0.15
TC-150	20~150	300		0.15
TC-250	30~250	350		0.15
TC-350	40~350	400		0.15

Dimensions / Performance curves

