

100 Series Directional Air Pilot Valve

Single Air Pilot Valve



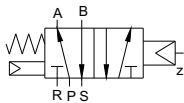
Double Air Pilot Valve



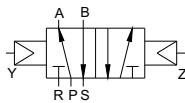
Ordering Code

- 4A1** - **10** - **M5**
- 4A1** - 100 series Directional Air Pilot Valve
- 10** - 5/2 way Single Air Pilot
- 20** - 5/2 way Double Air Pilot
- 30C** - 5/3 way Double Air Pilot Close Center
- 30E** - 5/3 way Double Air Pilot Exhaust Center
- 30P** - 5/3 way Double Air Pilot Open Center
- M5** - M5 X 0.8
- 06** - G 1/8"

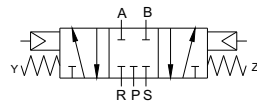
P.N.: 4A110-



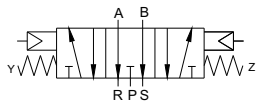
P.N.: 4A120-



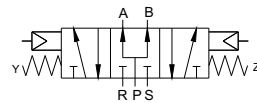
P.N.: 4A130C-



P.N.: 4A130E-



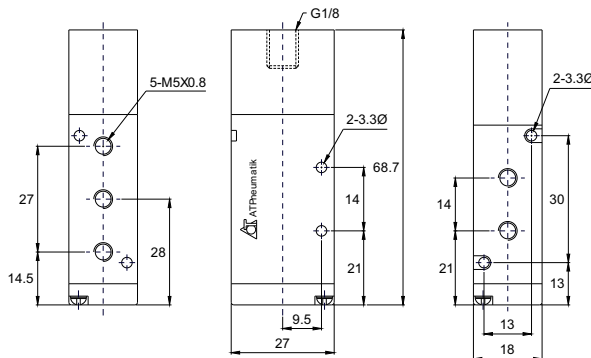
P.N.: 4A130P-



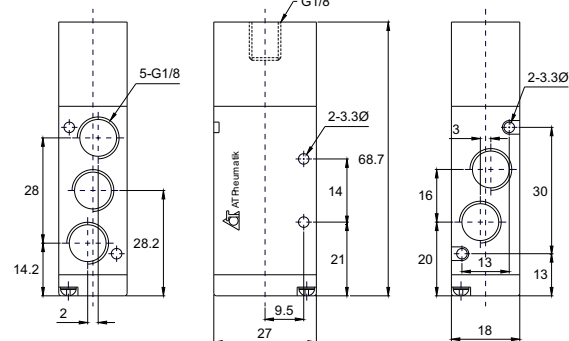
Air Pilot Valve Specification

Part Number	4A110-M5	4A120-M5	4A130C-M5	4A130E-M5	4A130P-M5	4A110-06	4A120-06	4A130C-06	4A130E-06	4A130P-06
Orifice Size	10mm ² (CV=0.56)					12mm ² (CV=0.67)				
Port Connection	Supply, Outlet, Exhaust M05 X 0.8					Supply, Outlet, Exhaust G 1/8"				
Working Medium	40 Micron Filtered Air									
Working Pressure	0.15 ~ 0.8 MPa, 1.5 ~ 8 Kg/cm ² , 22 ~ 117.6 PSI									
Maximum Test Pressure	1 MPa, 10 Kg/cm ² , 150 PSI									
Working Temperature	5 ~ 60°C, 41 ~ 140°F									
Switching Cycle	5 Cycle / Sec									

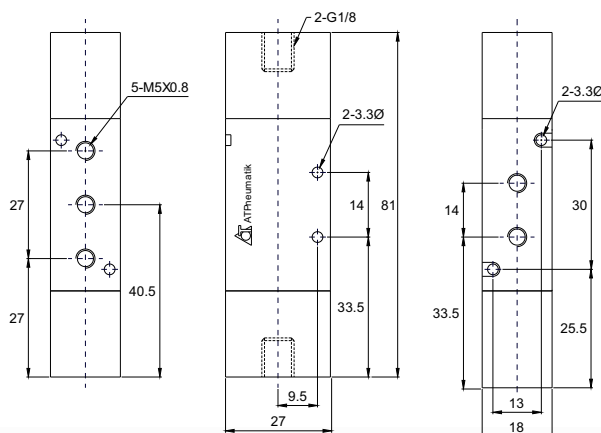
4A110-M5 5/2 way Single Air Pilot Valve



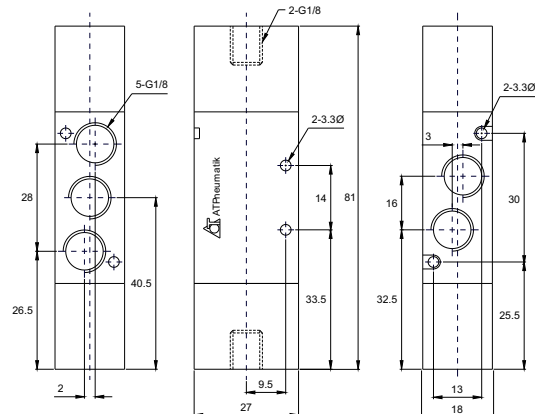
4A110-06 5/2 way Single Air Pilot Valve



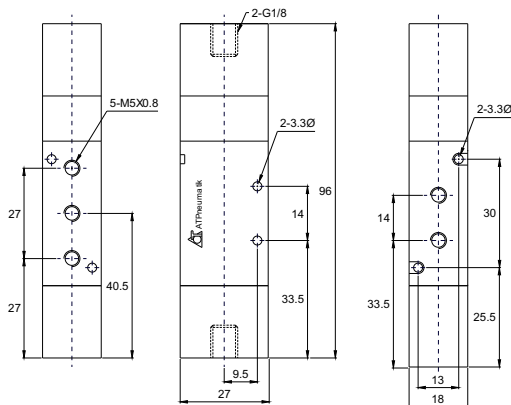
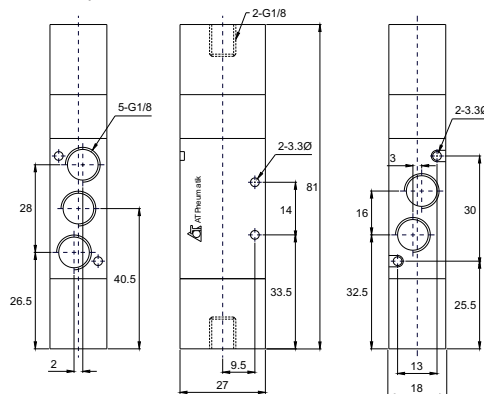
4A120-M5 5/2 way Double Air Pilot Valve



4A120-06 5/2 way Double Air Pilot Valve



Dimensions are in mm

4A130 -M5 5/3 way Double Air Pilot Valve

4A130 -06 5/3 way Double Air Pilot Valve


200 Series Directional Air Pilot Valve

Single Air Pilot Valve

Double Air Pilot Valve

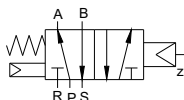

Ordering Code

4A2 - 10 - 06 - B

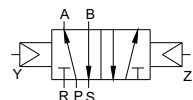
- 4A2** - 200 series, Directional Air Pilot Valve
- 10** - 5/2 way Single Air Pilot
- 20** - 5/2 way Double Air Pilot
- 30C** - 5/3 way Double Air Pilot Close Center
- 30E** - 5/3 way Double Air Pilot Exhaust Center
- 30P** - 5/3 way Double Air Pilot Open Center

- Blank** - Body Ported
- B** - Namur Connection
- 06** - G 1/8"
- 08** - G 1/4"

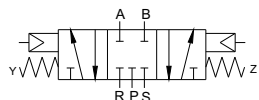
P.N.: 4A210-



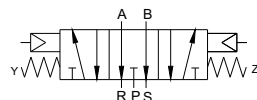
P.N.: 4A220-



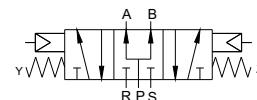
P.N.: 4A230C-



P.N.: 4A230E-

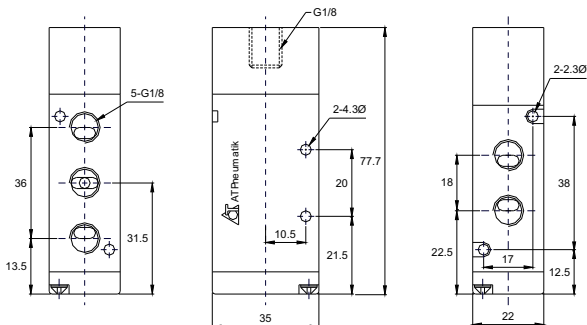
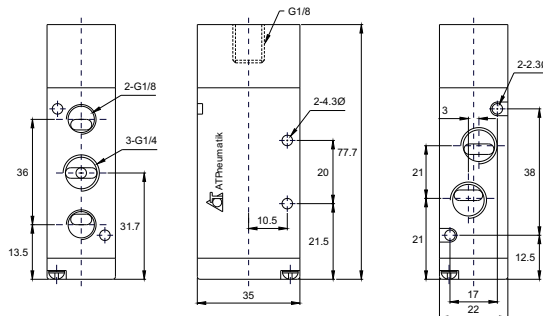


P.N.: 4A230P-



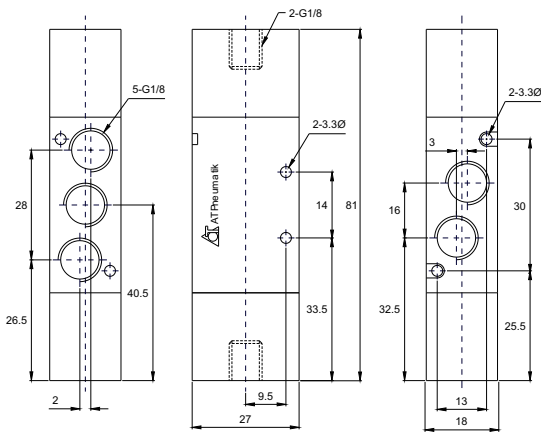
Air Pilot Valve Specification

Part Number	4A210-06	4A220-06	4A230C-06	4A230E-06	4A230P-06	4A210-08	4A220-08	4A230C-08	4A230E-08	4A230P-08
Orifice Size	14mm ² (CV=0.78)		12mm ² (CV=0.67)			16mm ² (CV=0.89)		12mm ² (CV=0.67)		
Port Connection	Supply, Outlet, Exhaust G 1/8"					Supply, Outlet G 1/4", Exhaust G 1/8"				
Working Medium	40 Micron Filtered Air									
Working Pressure	0.15 ~ 0.8 MPa, 1.5 ~ 8 Kg/cm ² , 22 ~ 117.6 PSI									
Maximum Test Pressure	1 MPa, 10 Kg/cm ² , 150 PSI									
Working Temperature	5 ~ 60°C, 41 ~ 140°F									
Switching Cycle	5 Cycle / Sec									

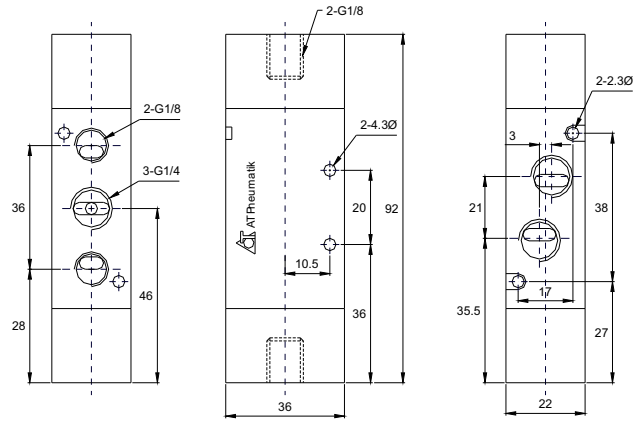
4A210-06 5/2 way Single Air Pilot Valve

4A210-06 5/2 way Single Air Pilot Valve


Dimensions are in mm

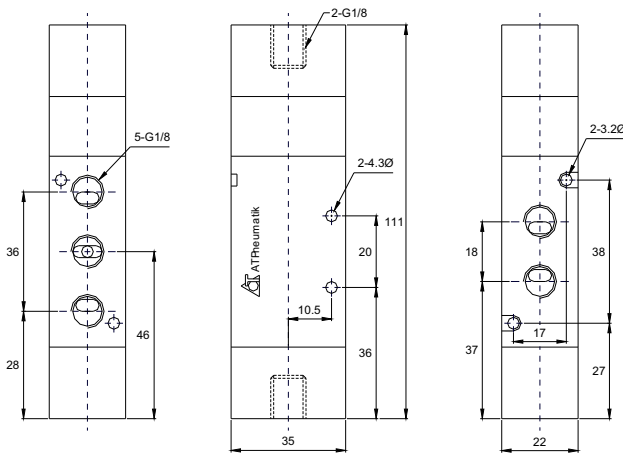
4A220-06 5/2 way Double Air Pilot Valve



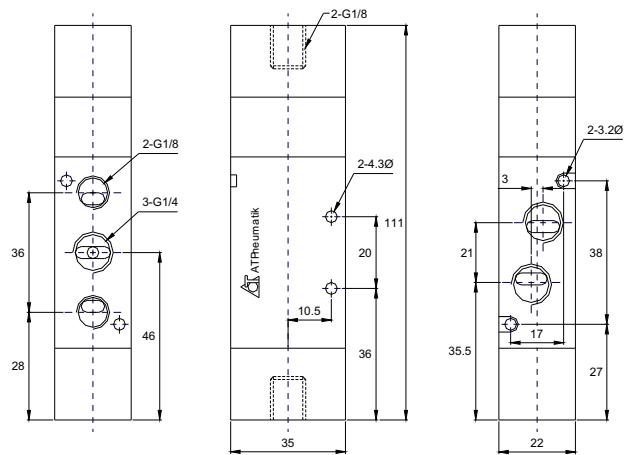
4A220-08 5/2 way Double Air Pilot Valve



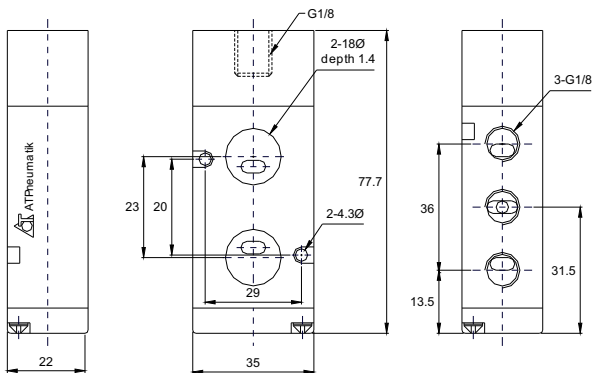
4A230 -06 5/3 way Double Air Pilot Valve



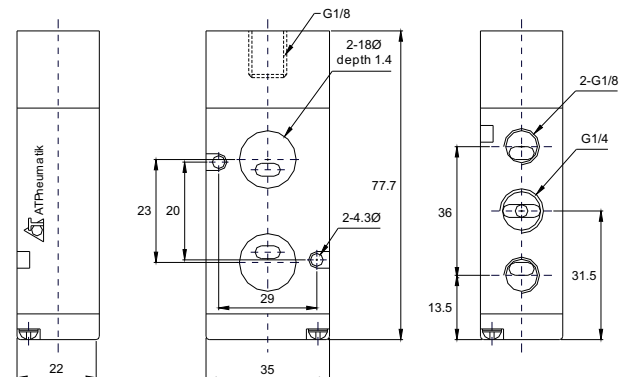
4A230 -08 5/3 way Double Air Pilot Valve



4A210-06B 5/2 way Single Air Pilot Valve NAMUR

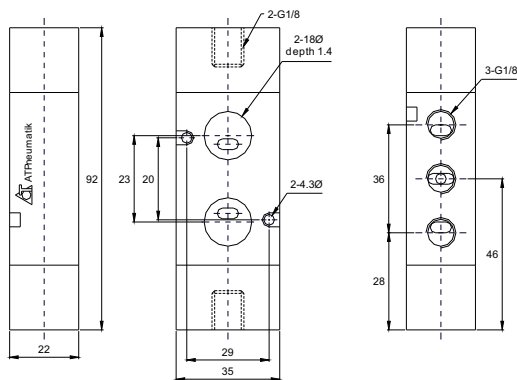


4A210-08B 5/2 way Single Air Pilot Valve NAMUR

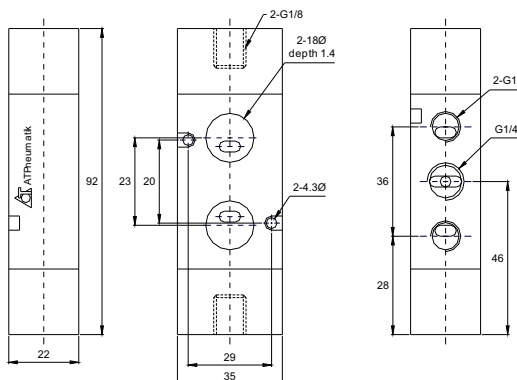


Dimensions are in mm

4A220-06B 5/2 way Double Air Pilot Valve NAMUR



4A220-08B 5/2 way Double Air Pilot Valve NAMUR



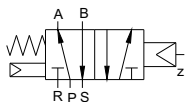
300 Series Directional Air Pilot Valve



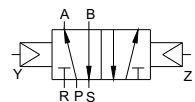
Ordering Code

- 4A3** - **10 - 08 - B**
- 4A3** - 300 series, Directional Air Pilot Valve
- 10** - 5/2 way Single Air Pilot
- 20** - 5/2 way Double Air Pilot
- 30C** - 5/3 way Double Air Pilot Close Center
- 30E** - 5/3 way Double Air Pilot Exhaust Center
- 30P** - 5/3 way Double Air Pilot open Center
- Blank** - Body Ported
- B** - Namur Connection
- 08** - G 1/4"
- 10** - G 3/8"

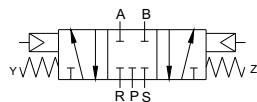
P.N.: 4A310-



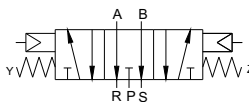
P.N.: 4A320-



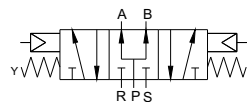
P.N.: 4A330C-



P.N.: 4A330E-

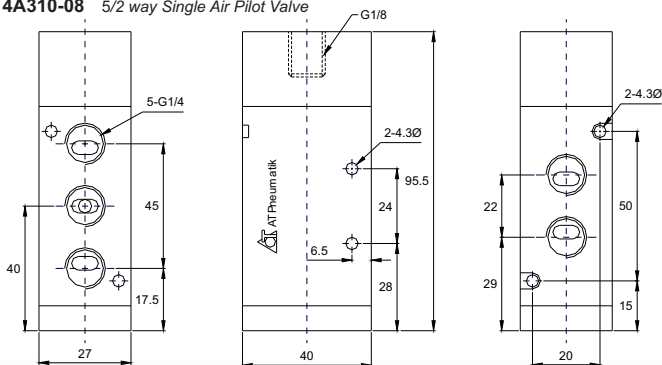


P.N.: 4A330P-

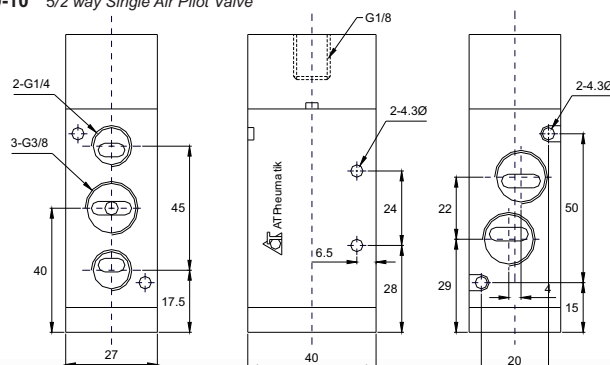


Air Pilot Valve Specification										
Part Number	4A310-08	4A320-08	4A330C-08	4A330E-08	4A330P-08	4A310-10	4A320-10	4A330C-10	4A330E-10	4A330P-10
Orifice Size	25mm ² (CV=1.40)		18mm ² (CV=1.00)			30mm ² (CV=1.68)		18mm ² (CV=1.00)		
Port Connection	Supply, Outlet, Exhaust G 1/4"					Supply, Outlet G 3/8", Exhaust G 1/4"				
Working Medium	40 Micron Filtered Air									
Working Pressure	0.15 ~ 0.8 MPa, 1.5 ~ 8 Kg/cm ² , 22 ~ 117.6 PSI									
Maximum Test Pressure	1 MPa, 10 Kg/cm ² , 150 PSI									
Working Temperature	5 ~ 60°C, 41 ~ 140°F									
Switching Cycle	5 Cycle / Sec									

4A310-08 5/2 way Single Air Pilot Valve

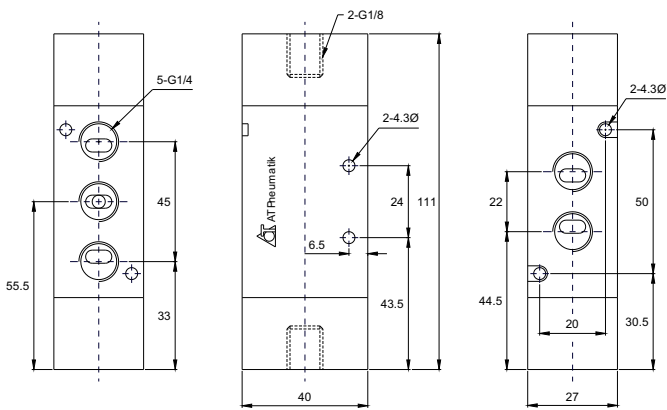


4A310-10 5/2 way Single Air Pilot Valve

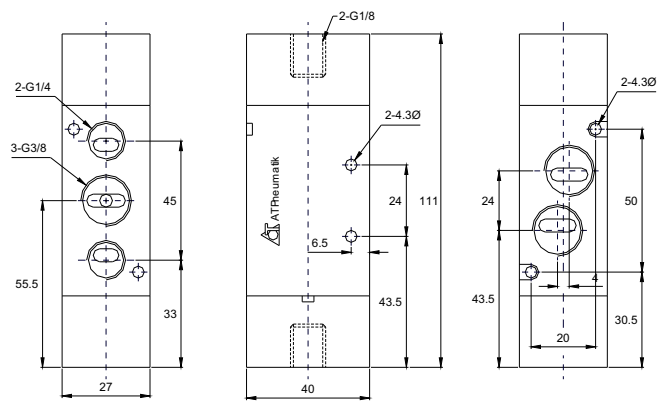


Dimensions are in mm

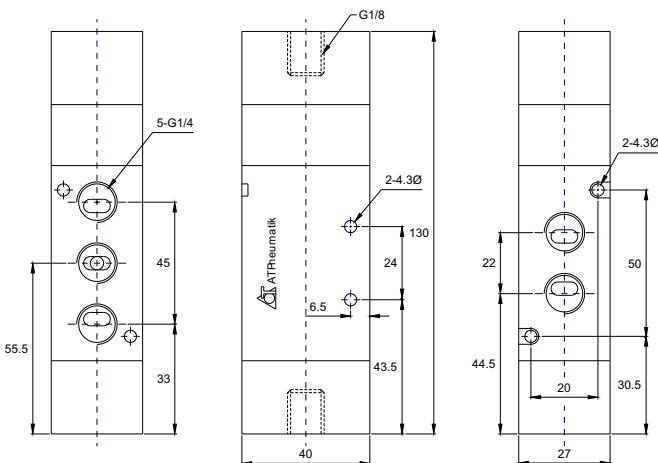
4A320-08 5/2 way Double Air Pilot Valve



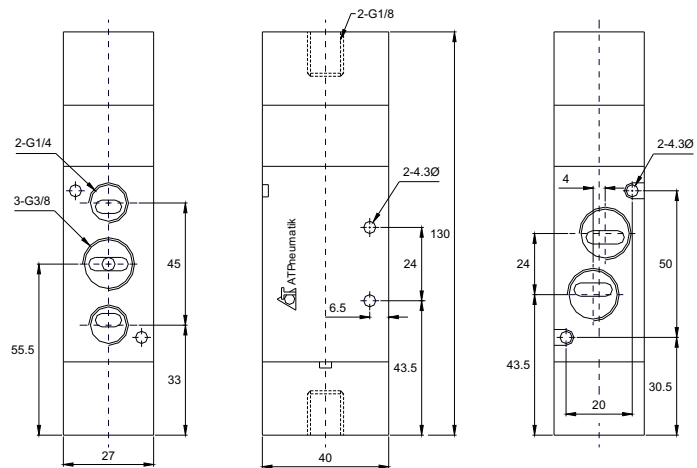
4A320-10 5/2 way Double Air Pilot Valve



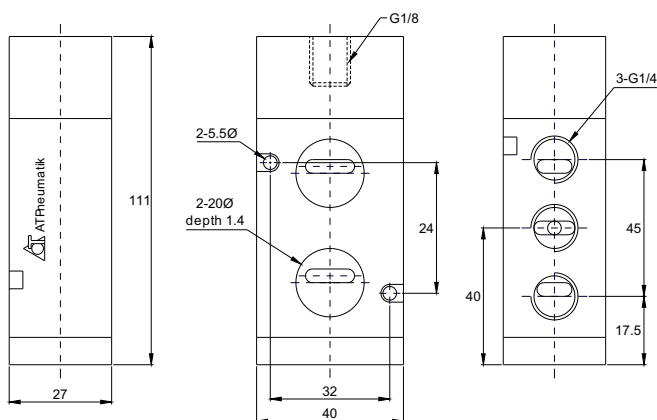
4A330 -08 5/3 way Double Air Pilot Valve



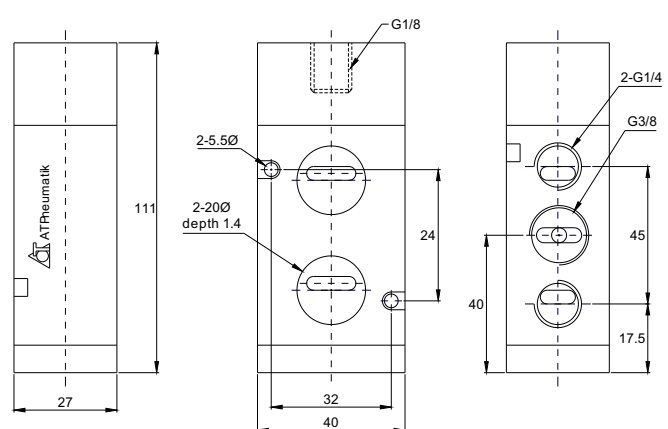
4A330 -10 5/3 way Double Air Pilot Valve



4A310-08B 5/2 way Single Air Pilot Valve NAMUR

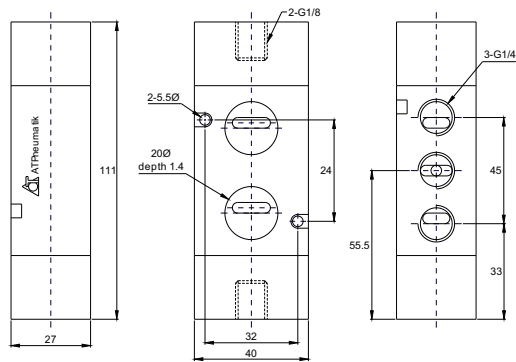


4A310-10B 5/2 way Single Air Pilot Valve NAMUR

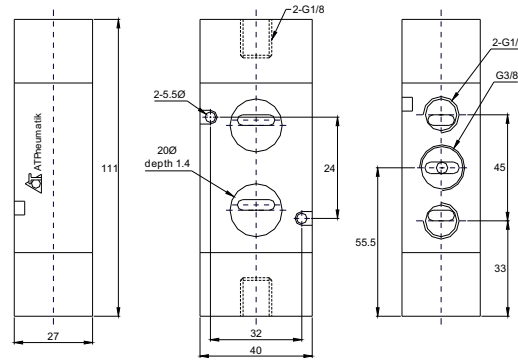


Dimensions are in mm

4A320-08B 5/2 way Double Air Pilot Valve



4A320-10B 5/2 way Double Air Pilot Valve



400 Series Directional Air Pilot Valve

Single Air Pilot Valve



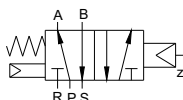
Double Air Pilot Valve



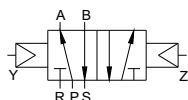
Ordering Code

- 4A4** - **10 - 15**
- 4A4** - 400 series, Directional Air Pilot Valve
- 10** - 5/2 way Single Air Pilot
- 20** - 5/2 way Double Air Pilot
- 30C** - 5/3 way Double Air Pilot Close Center
- 30E** - 5/3 way Double Air Pilot Exhaust Center
- 30P** - 5/3 way Double Air Pilot Open Center
- 15** - G 1/2"

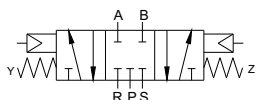
P.N.: 4A410-



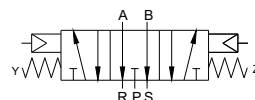
P.N.: 4A420-



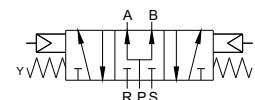
P.N.: 4A430C-



P.N.: 4A430E-



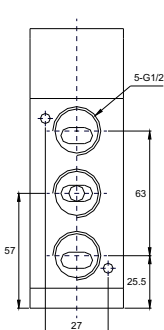
P.N.: 4A430P-



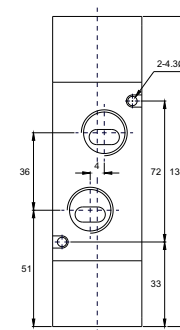
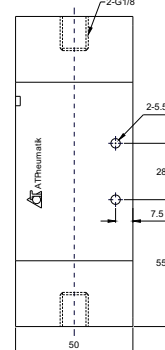
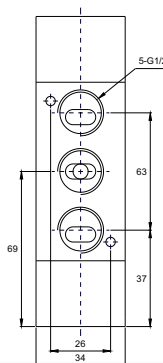
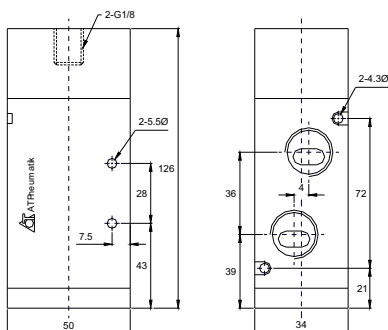
Air Pilot Valve Specification

Part Number	4A410-15	4A420-15	4A430C-15	4A430E-15	4A430P-15
Orifice Size	50mm ² (CV=2.79)		30mm ² (CV=1.68)		
Port Connection	Supply, Outlet, Exhaust G 1/2"				
Working Medium	40 Micron Filtered Air				
Working Pressure	0.15 ~ 0.8 MPa, 1.5 ~ 8 Kgf/cm ² , 22 ~ 117.6 PSI				
Maximum Test Pressure	1 MPa, 10 Kgf/cm ² , 150 PSI				
Working Temperature	5 ~ 60°C, 41 ~ 140°F				
Switching Cycle	5 Cycle / Sec				

4A410 -15 5/2 way Single Air Pilot Valve

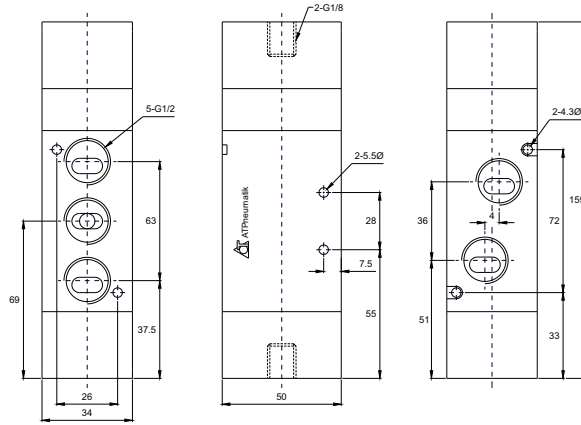


4A420 -15 5/2 way Double Air Pilot Valve

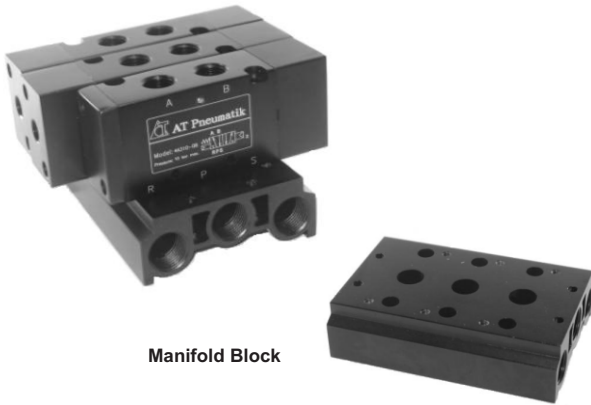


Dimensions are in mm

4A430 -15 5/3 way Double Air Pilot Valve



Manifold Block for Air Pilot Valve



Manifold Block

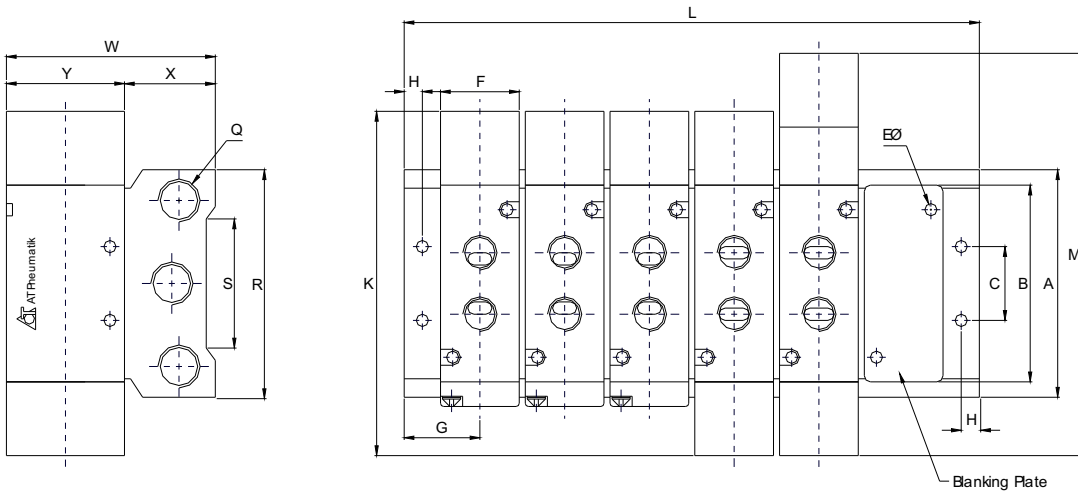
Ordering Code

100M - N - F

- 100M** - 100 series valve
- 200M** - 200 series valve
- 300M** - 300 series valve
- 400M** - 400 series valve

N - Specify the required valves quantity when ordering

Manifold is available from minimum of 2 stations to maximum of 12 stations



Note: n = number of valve or station

Manifold Dimension

Manifold Series	A	B	C	E	F	G	H	K	L	M	Q	R	S	W	X	Y
100M- F	58	44	20	4.2	18.3	19	5	69	$\{(n-1) \times 19\} + 38$	96	G 1/4"	40	30	78.5	25	27
200M- F	61	51	21	4.3	22.4	23	6	78	$\{(n-1) \times 23\} + 46$	111	G 1/4"	43	32	92.5	26	35
300M- F	75	65	26	4.5	27.3	27	6	96	$\{(n-1) \times 28\} + 54$	130	G 3/8"	53	48	99	30	40
400M- F	10	95	32	5.5	34.3	31.5	7	128	$\{(n-1) \times 35\} + 63$	163	G 1/2"	68	67	112	38	50

Dimensions are in mm